





1135 Round Meadow Drive

AT THE MEADOWS



-  3 Bedrooms
-  2.5 Bathrooms
-  2918 Square Feet
-  2 Car Garage

\$720,526



Think you've seen it all? Then you haven't seen Linden Terrace, a 2-story plan with 3 bedrooms, 2.5 baths, a 2-car garage, and 2,700 glorious square feet of pure home happiness. A front porch made for sipping lemonade and social graces welcomes you inside to a chef's dream kitchen offering a scenic vista overlooking both breakfast nook and family room. A formal dining room and home study lend sophistication and flexibility, while a secluded first floor primary suite with prodigious walk-in closet and dual-sink bath offer a quiet escape. Step downstairs to the terrace level where a rec room, full bath, and two additional bedrooms blend playfulness, with easygoing comfort and everyday livability—while a cavernous unfinished storage area is ready for whatever you can imagine.

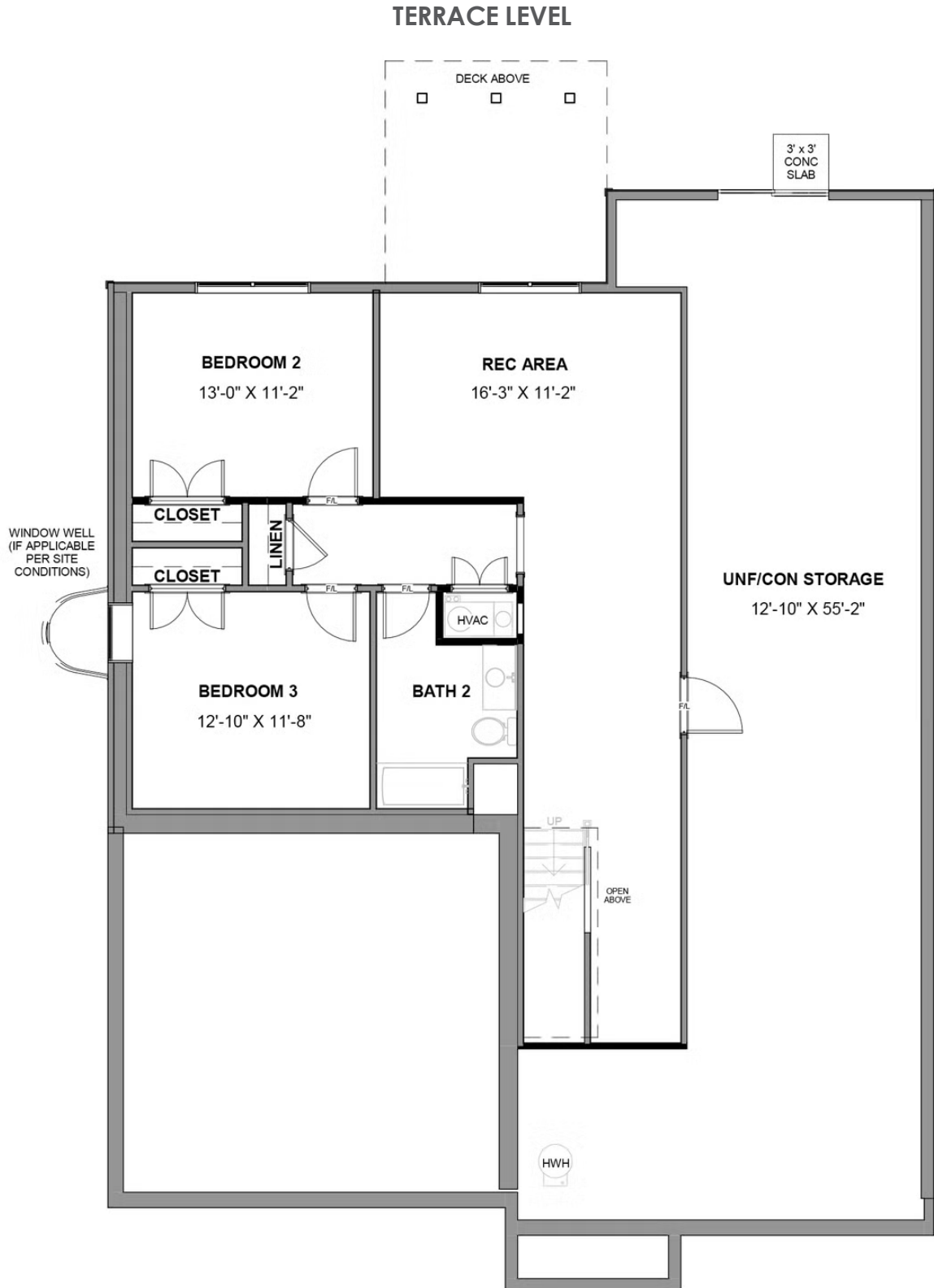
Features of this Home

- Main Level Living
- Primary Bedroom on Main Level with Serenity Bath
- Fireplace in Family Room
- French Doors in Study
- LED Recessed Lighting Package with Dimmer Switch in Family Room, Primary Bedroom, and Rec Room
- High Definition Video Package in Family Room
- Hardwood Floors Throughout Main Level
- Kitchen Features Granite Countertops and Convection Gas Range

eagleofva.com

1135 Round Meadow Drive

AT THE MEADOWS



eagleofva.com

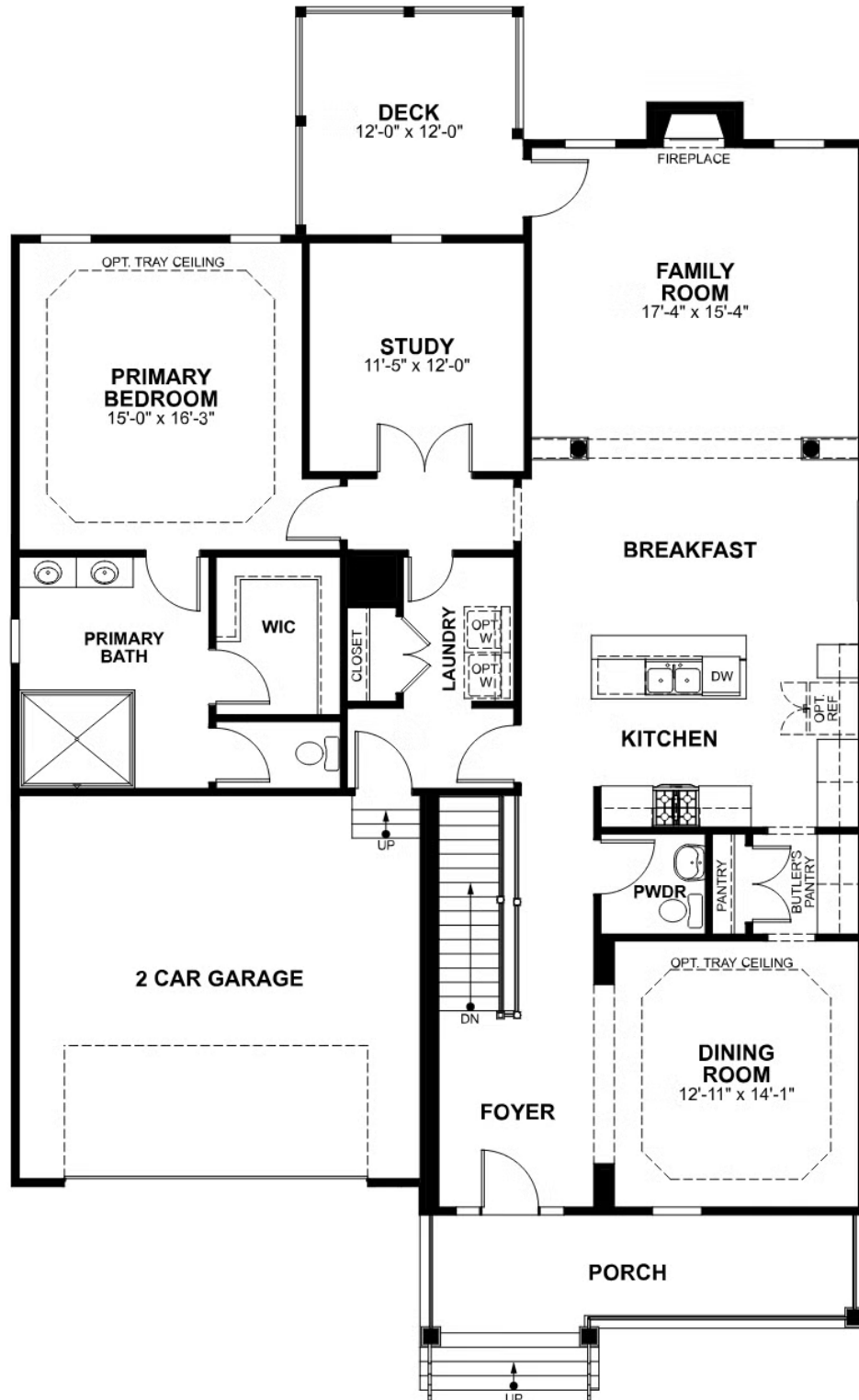
This information is deemed reliable but not guaranteed. All details, dimensions, square footage, illustrations and pricing are approximate and may vary from actual plans and specifications. Contact an Eagle Sales Consultant for details. Current information as of 18th May 2024

1135 Round Meadow Drive

AT THE MEADOWS



MAIN LEVEL



eagleofva.com

This information is deemed reliable but not guaranteed. All details, dimensions, square footage, illustrations and pricing are approximate and may vary from actual plans and specifications. Contact an Eagle Sales Consultant for details. Current information as of 18th May 2024