





# 401 W. 7th Street #13

AT MCRAE & LACY



-  3 Bedrooms
-  3.5 Bathrooms
-  3100 Square Feet
-  2 Car Garage

**\$959,000**



This Southaven is a 4-story end unit second floor entry townhome. On the first floor you will find your 2-car rear load garage, as well a rec room and full bath. You can take your personal elevator to any floor you choose, but first head on up to the second floor where you will find the main entry door to your home, along with your kitchen that has a large island opening right to the spacious family room with fireplace. A dining room completes the floor. The third floor has is an entire owner's suite with large primary bathroom and huge walk-in closet and laundry room!

The fourth floor will have an additional bedroom and full bath, as well as a spacious media room that leads out to a large outdoor terrace. Enjoy beautiful views of the city and river from your terrace while sipping on your morning coffee or enjoying some evening appetizers and the sunset.

## Features of this Home

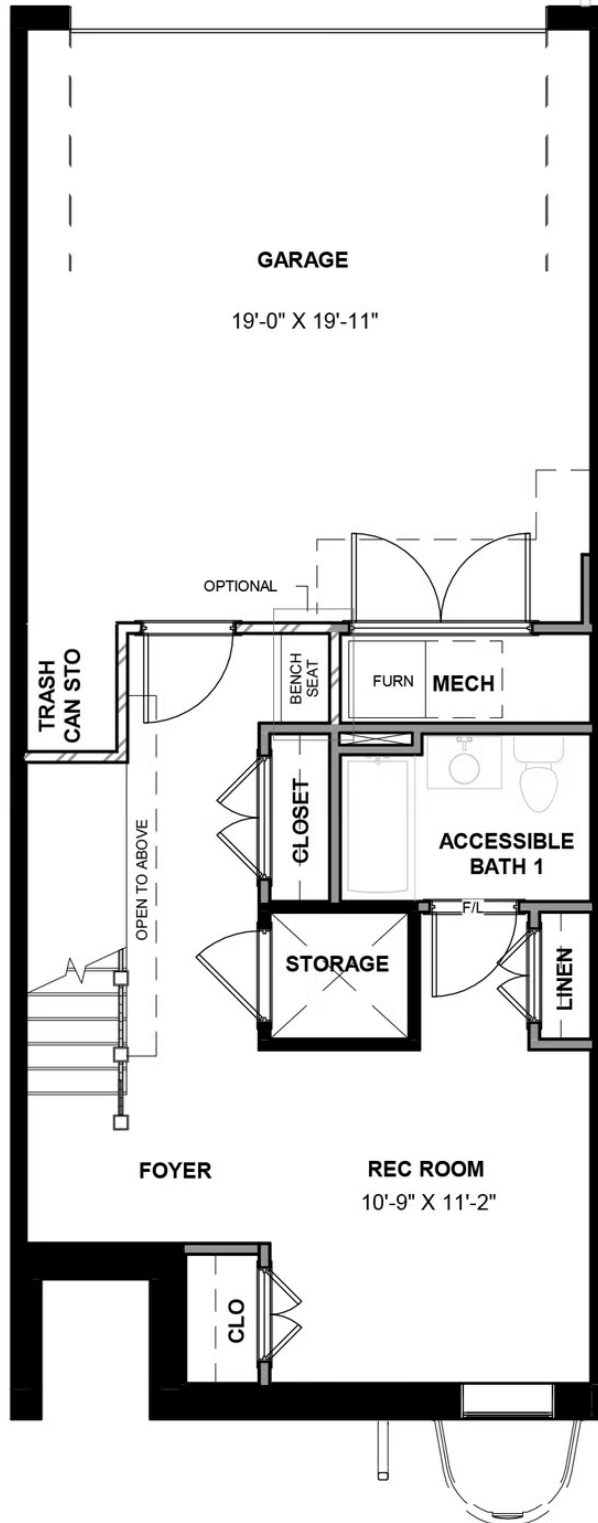
- End unit
- Third floor entire owner's suite with bench seat in primary shower
- Elevator
- Fireplace in family room
- Fourth floor media room and large rear terrace
- Quartz waterfall countertops in kitchen

[eagleofva.com](http://eagleofva.com)

AT MCRAE & LACY



## FIRST FLOOR



eagleofva.com

This information is deemed reliable but not guaranteed. All details, dimensions, square footage, illustrations and pricing are approximate and may vary from actual plans and specifications. Contact an Eagle Sales Consultant for details. Current information as of 18th May 2024

# 401 W. 7th Street #13

AT MCRAE & LACY



## SECOND FLOOR



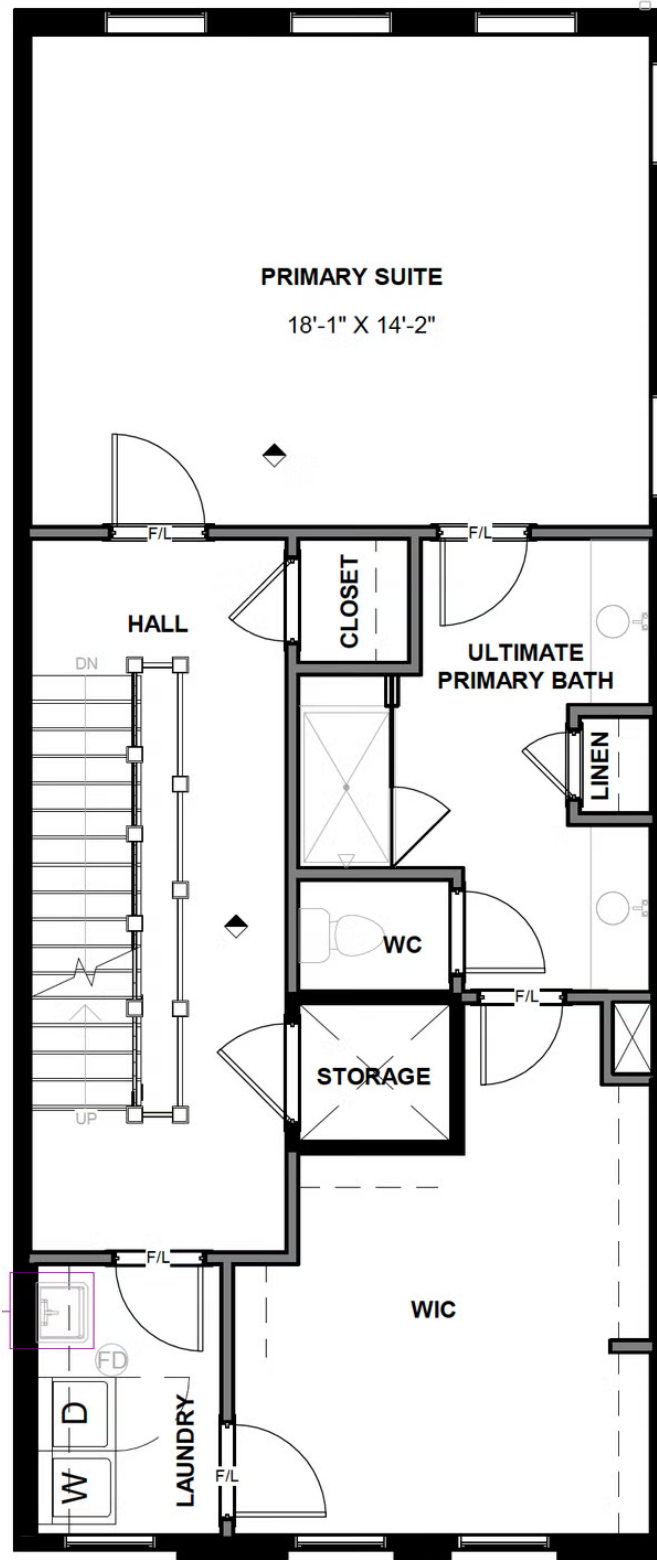
eagleofva.com

# 401 W. 7th Street #13

AT MCRAE & LACY



## THIRD FLOOR



[eagleofva.com](http://eagleofva.com)

## FOURTH FLOOR

