





421 W. 7th Street

AT MCRAE & LACY



-  3 Bedrooms
-  3.5 Bathrooms
-  3100 Square Feet
-  2 Car Garage

\$945,000



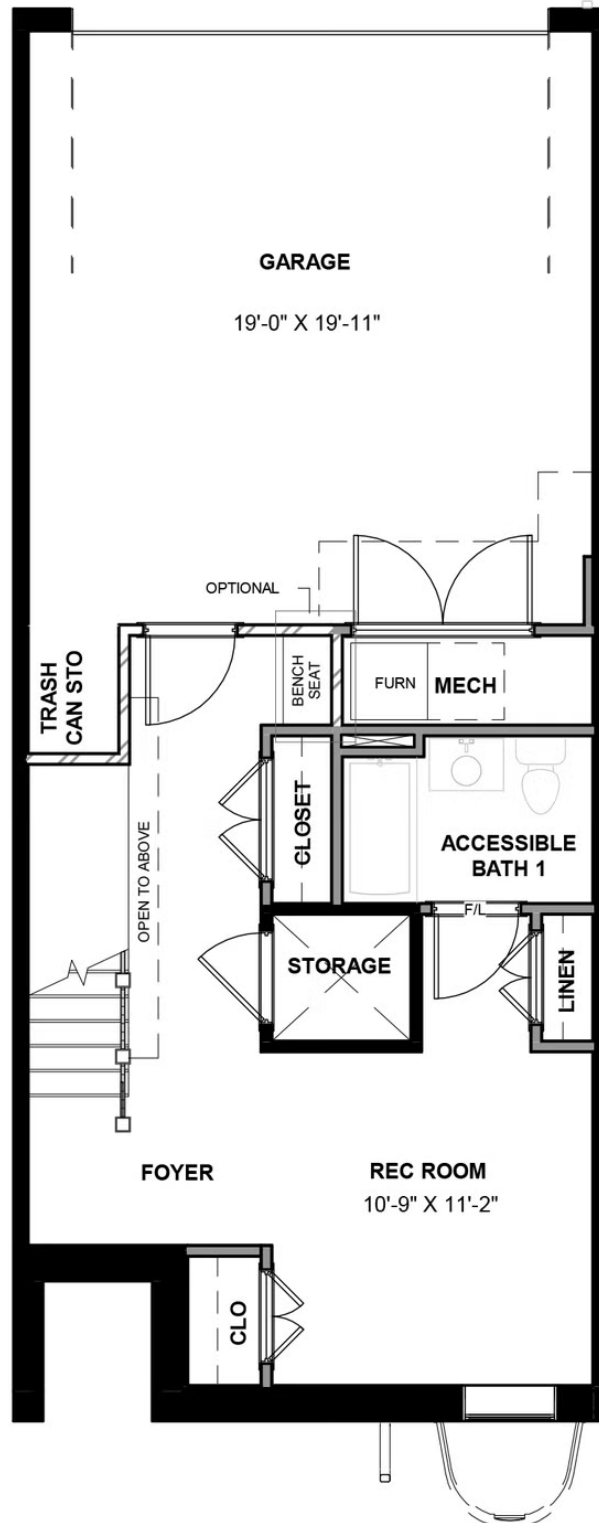
The Southaven is a 4-story second floor entry townhome with plenty of opportunity to personalize this new home floor plan to fit your lifestyle. On the first floor you will find your 2-car rear load garage, as well a bedroom and full bath. Head on up to the second floor where you will find the main entry door to your home, along with your kitchen that has a large island opening right to the spacious Family Room. A dining room completes the floor. Your entire 3rd floor will be your owners suite, complete with a beautiful bathroom with freestanding tub and enormous walk-in closet! Plus your laundry room is on this floor for added convenience. The fourth floor will have an additional bedroom and full bath, as well as a spacious media room that leads out to a large outdoor terrace. Enjoy beautiful views of the city and river from your terrace while sipping on your morning coffee or enjoying some evening appetizers and the sunset. This home also features an elevator, providing even more convenience.

Features of this Home

- Entire 3rd Floor Owner's Suite
- Tub in Primary Bath
- Fireplace
- Modern Finishes
- Elevator
- NanaWall to Outdoor Terrace

eagleofva.com

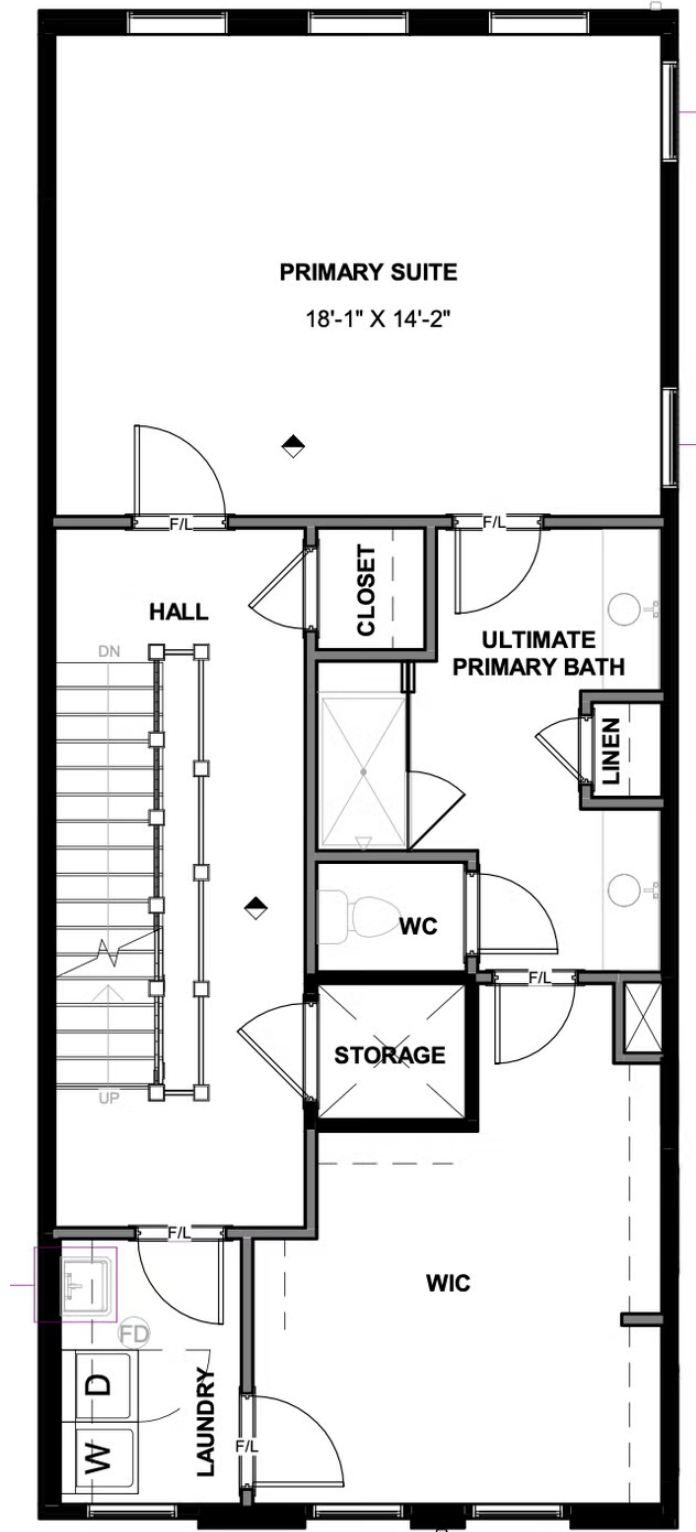
FIRST FLOOR



SECOND FLOOR



THIRD FLOOR



FOURTH FLOOR

