





# 105 St. Annes

AT THE PARKE AT CYPRESS CREEK



-  3 Bedrooms
-  2.5 Bathrooms
-  1894 Square Feet
-  2 Car Garage

**\$514,990**



Stay down to earth with the Easton, a one-level plan that spares nothing when it comes to space. Offering 3-bedrooms, 2.5 baths, a 2-car courtyard garage and over 1,800 square feet, you'll feel right at home the moment you arrive. From quiet evening meals to lively gatherings of friends and family, the effortless flow of kitchen, dining, and family room promise easy living and entertaining. A fireplace in the family room provides the perfect place to cozy up with a good book or your favorite show. Step out to your raised patio for a little fresh air before retreating to your primary suite with its luxurious serenity primary bath and large walk-in closet. Tucked off the family room are two more bedrooms and a full bath, with an additional half bath and laundry room off the foyer.

## Features of this Home

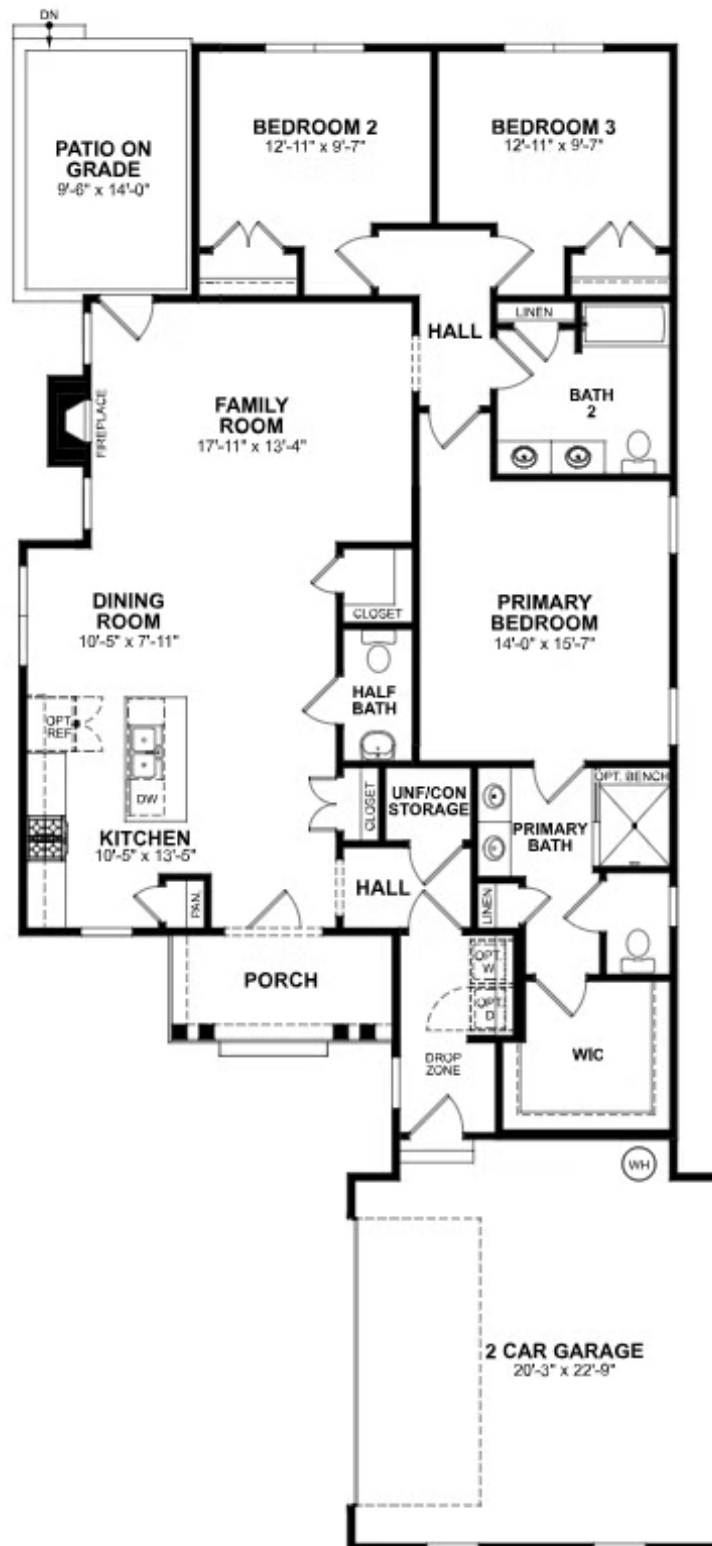
- One level living
- Interior homesite facing community green space
- Fireplace in family room
- Alternate kitchen layout
- Serenity primary bath
- Raised patio with brick steps

[eagleofva.com](http://eagleofva.com)



# 105 St. Annes

AT THE PARKE AT CYPRESS CREEK



eagleofva.com