






-  4 Bedrooms
-  2.5 Bathrooms
-  2,706 Square Feet
-  2 Car Garage
-  2 Levels



Smart, stately, and dressed to impress, the Bradford is a new 2-story plan with 4 bedrooms, 2.5+ baths, a back deck, and over 2,700 square feet of gracious modern living. Step from front porch to foyer and into a feeling of home as fresh as the mountain air. A front study and formal dining room greet guests like proper hosts, inviting all to a vast panoramic roomscape where the smells of home cooking blend with the love of family and laughter of gatherings that go well past bedtime. As the night ends, head upstairs to your majestic primary suite with its epic dual-sink bath and linen closet, and a walk-in as big as the great outdoors. 3 additional bedrooms with walk-in closets, a full dual-sink bath, and second floor laundry ensure you never be lacking for space to stretch and room to grow.

## Features of this Floorplan

- Study
- Formal dining room
- Walk-in pantry
- Full front porch
- Spacious primary bedroom with multiple bath layouts and huge walk-in closet
- Three additional bedrooms all with generous sized walk-in closets
- Option for three-car garage
- Option for screened porch



**Arts & Crafts**

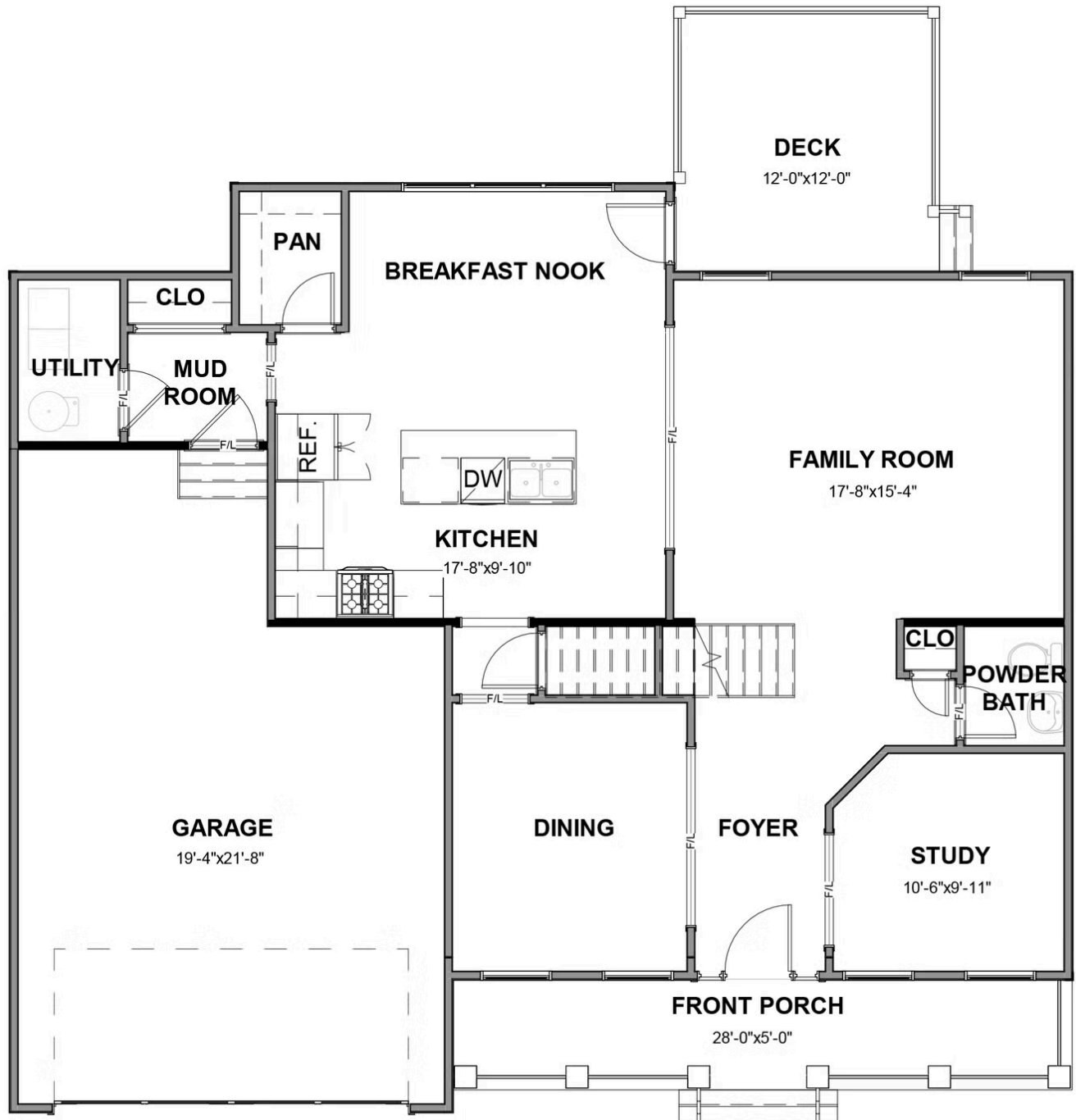


**Craftsman**



**Folk Victorian**

## FIRST FLOOR



SECOND FLOOR

