






-  3 Bedrooms
-  2.5 Bathrooms
-  2,918 Square Feet
-  2 Car Garage
-  2 Levels



Think you've seen it all? Then you haven't seen Linden Terrace, a 2-story plan with 3 bedrooms, 2.5 baths, a 2-car garage, and 2,700 glorious square feet of pure home happiness. A front porch made for sipping lemonade and social graces welcomes you inside to a chef's dream kitchen offering a scenic vista overlooking both breakfast nook and family room. A formal dining room and home study lend sophistication and flexibility, while a secluded first floor primary suite with prodigious walk-in closet and dual-sink bath offer a quiet escape. Step downstairs to the terrace level where a rec room, full bath, and two additional bedrooms blend playfulness, with easygoing comfort and everyday livability—while a cavernous unfinished storage area is ready for whatever you can imagine.

## Features of this Floorplan

- Main level primary bedroom
- Study
- Butler's pantry
- Formal dining room
- Terrace level with rec area and additional bedrooms
- Multiple primary bath configurations
- Option for screened porch
- Option for expanded rec room
- Option for Florida room



**Traditional**

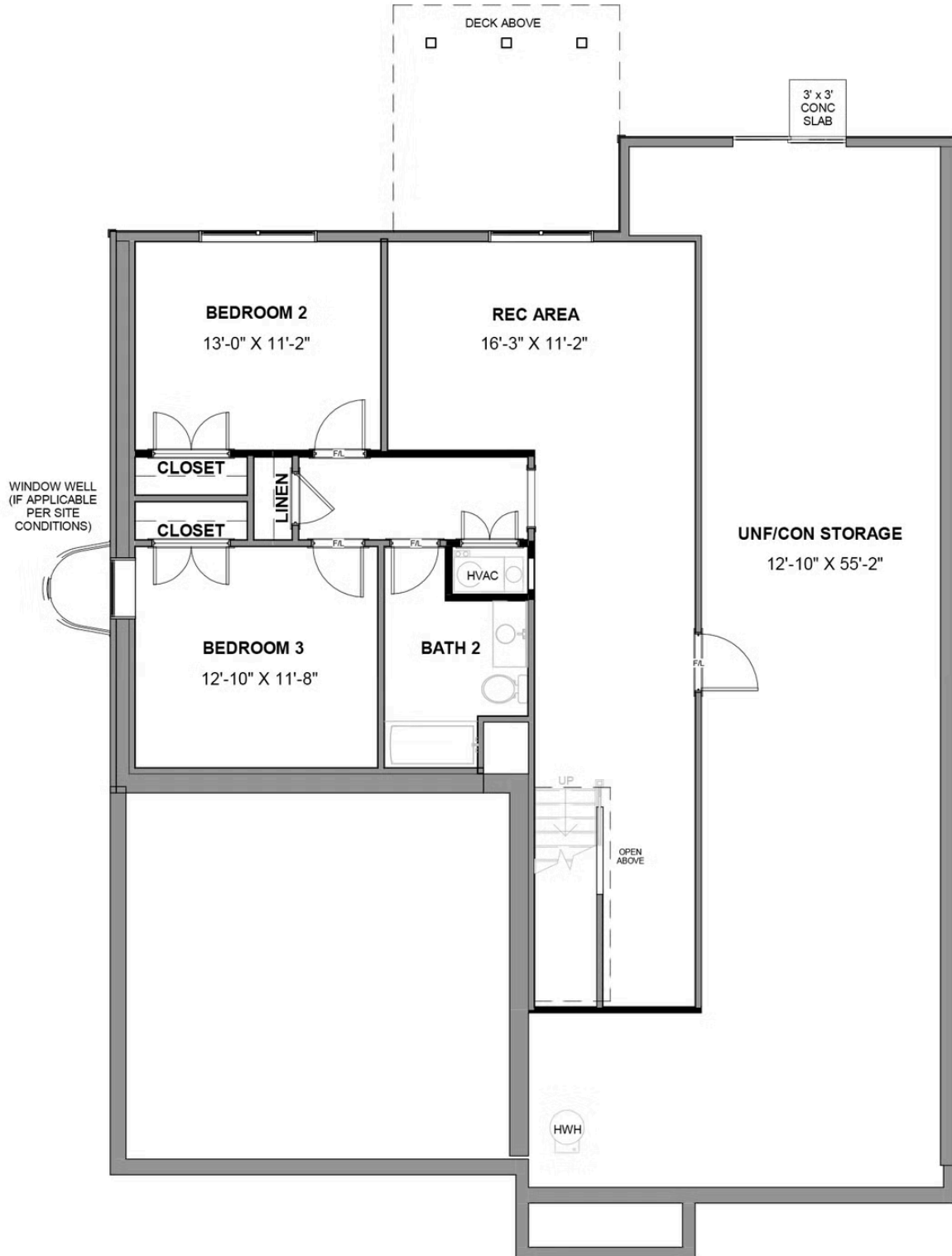


**Craftsman**



**Folk Victorian**

## TERRACE LEVEL



## MAIN LEVEL

