






-  3 Bedrooms
-  2.5 Bathrooms
-  2,391 Square Feet
-  2 Car Garage
-  2 Levels



From the joys of empty nesting to the pleasures of easy living, it all comes home at Stamford, a 2-story plan featuring 3-bedrooms, 2.5 baths, a 2-car courtyard garage, and over 2,300 square feet. The foyer opens to the heart of the home, a true chef's kitchen ready to whip up a post-round snack or holiday feast with all the trimmings. Not to be outdone, the spacious family room and back patio are made for leisure, with a dining room perfect for meals both formal and relaxed. A large first floor primary suite redefines "roomy" with an equally generous dual-sink bath and walk-in closet. Two additional bedrooms and a full bath await upstairs, while a half bath and laundry room off the garage complete the home. The Stamford offers room for personalization, too, with various layout and amenity options, including a Florida Room or screened porch, added storage, and more.

Features of this Floorplan

- First floor primary bedroom
- 2-car courtyard garage
- Multiple primary bath layouts
- Option for Florida room or screened porch
- Opportunity for pocket office



Coastal



Cottage



Craftsman



Farmhouse



Folk Victorian

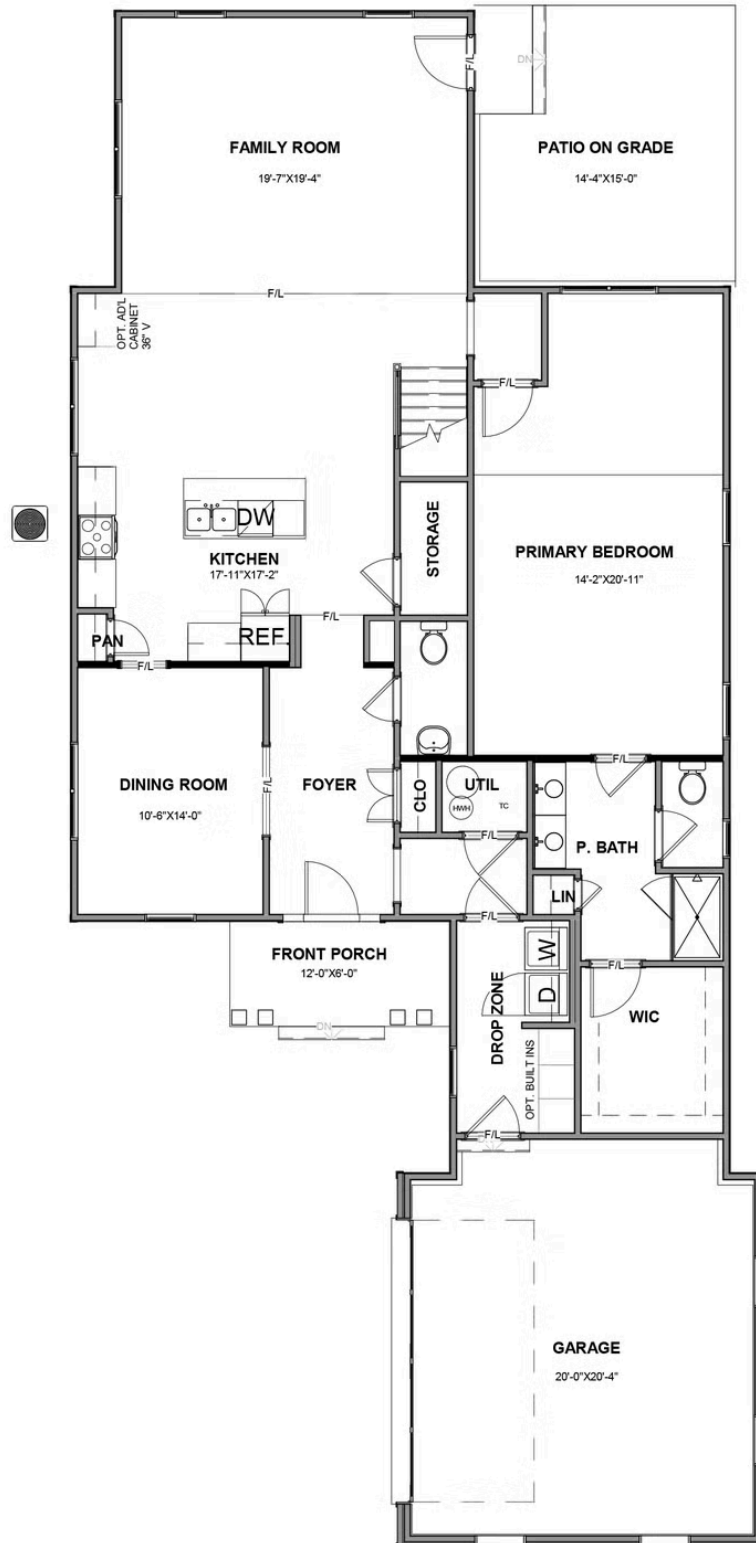


New England



Traditional7

FIRST FLOOR



SECOND FLOOR

