





200 Claire Drive

AT GIVENS FARM



-  3 Bedrooms
-  2.5 Bathrooms
-  3741 Square Feet
-  2 Car Garage

\$889,900



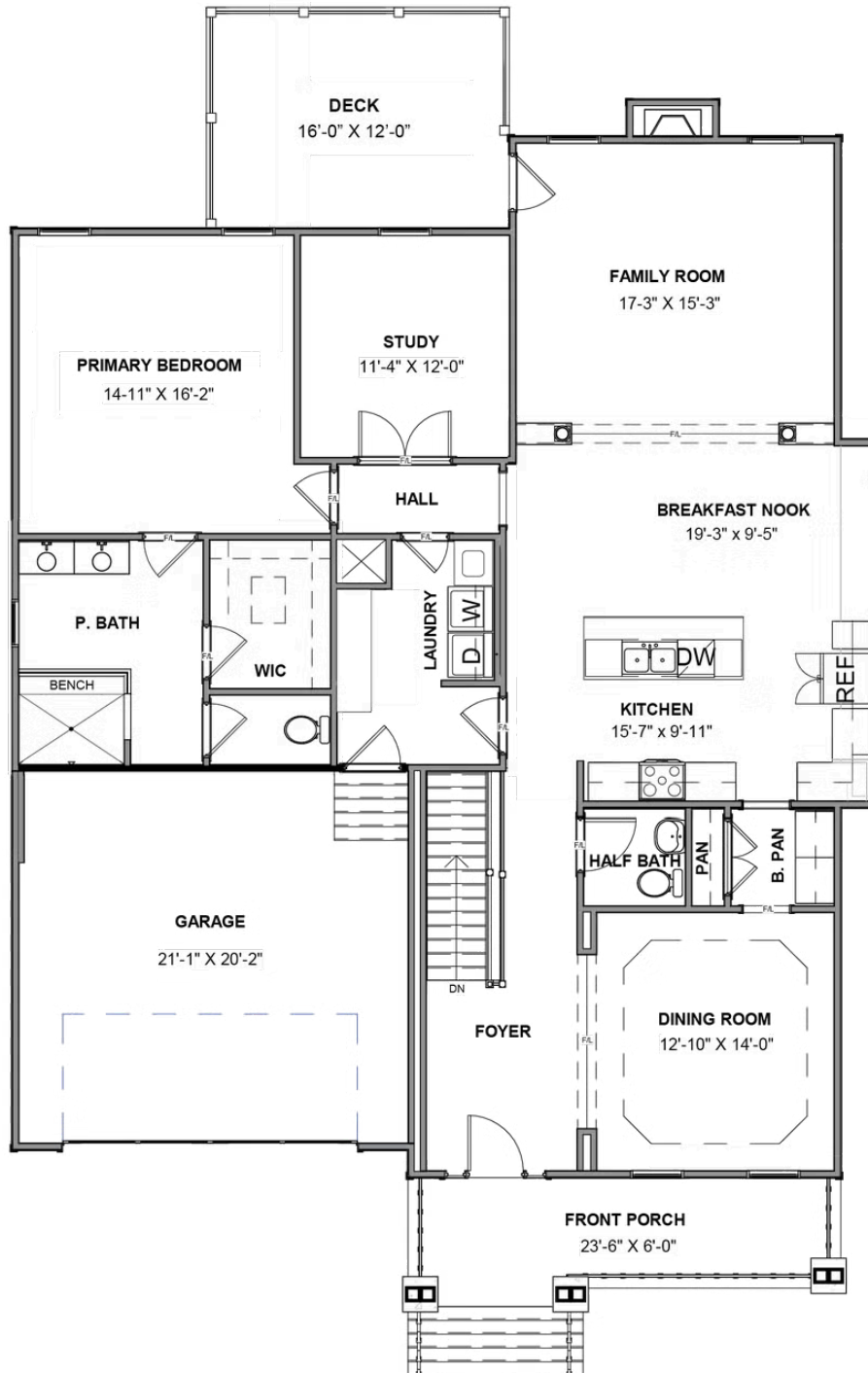
Think you've seen it all? Then you haven't seen Linden Terrace, a 2-story plan with 3 bedrooms, 2.5 baths, a 2-car garage, and 3,741 glorious square feet of pure home happiness. A front porch made for sipping lemonade and social graces welcomes you inside to a chef's dream kitchen offering a scenic vista overlooking both breakfast nook and family room. A formal dining room and home study lend sophistication and flexibility, while a secluded first floor primary suite with prodigious walk-in closet and dual-sink bath offer a quiet escape. Step downstairs to the terrace level where a rec room, full bath, and two additional bedrooms blend playfulness, with easygoing comfort and everyday livability—while a cavernous flex area is ready for whatever you can imagine.

Features of this Home

- First Floor Primary Bedroom Suite features a craftsman trim feature wall, large walk-in closet, ceramic tile primary bath flooring and expanded shower with bench seat
- Beautiful Kitchen featuring quartz countertops, a timeless ceramic tile backsplash, wood range hood, stainless steel appliances including gas range, refrigerator, microwave drawer, and dishwasher
- Butler's Pantry features quartz countertops, ceramic tile backsplash, upper cabinet wine storage and glass shelves with glass doors
- Family Room features coffered ceiling, and gas fireplace with stone surround and mantle
- Laundry Room with exquisite decorate ceramic tile floor, sink, upper cabinets, washer, dryer, and drop zone built-in with storage, hooks, and bench
- Basement level features Cafe Kitchen with stainless steel full size refrigerator, microwave drawer, dishwasher

eagleofva.com

MAIN LEVEL



TERRACE LEVEL

