





2209 Carroll Drive

AT GIVENS FARM



-  3 Bedrooms
-  2.5 Bathrooms
-  3370 Square Feet
-  2 Car Garage

\$799,900



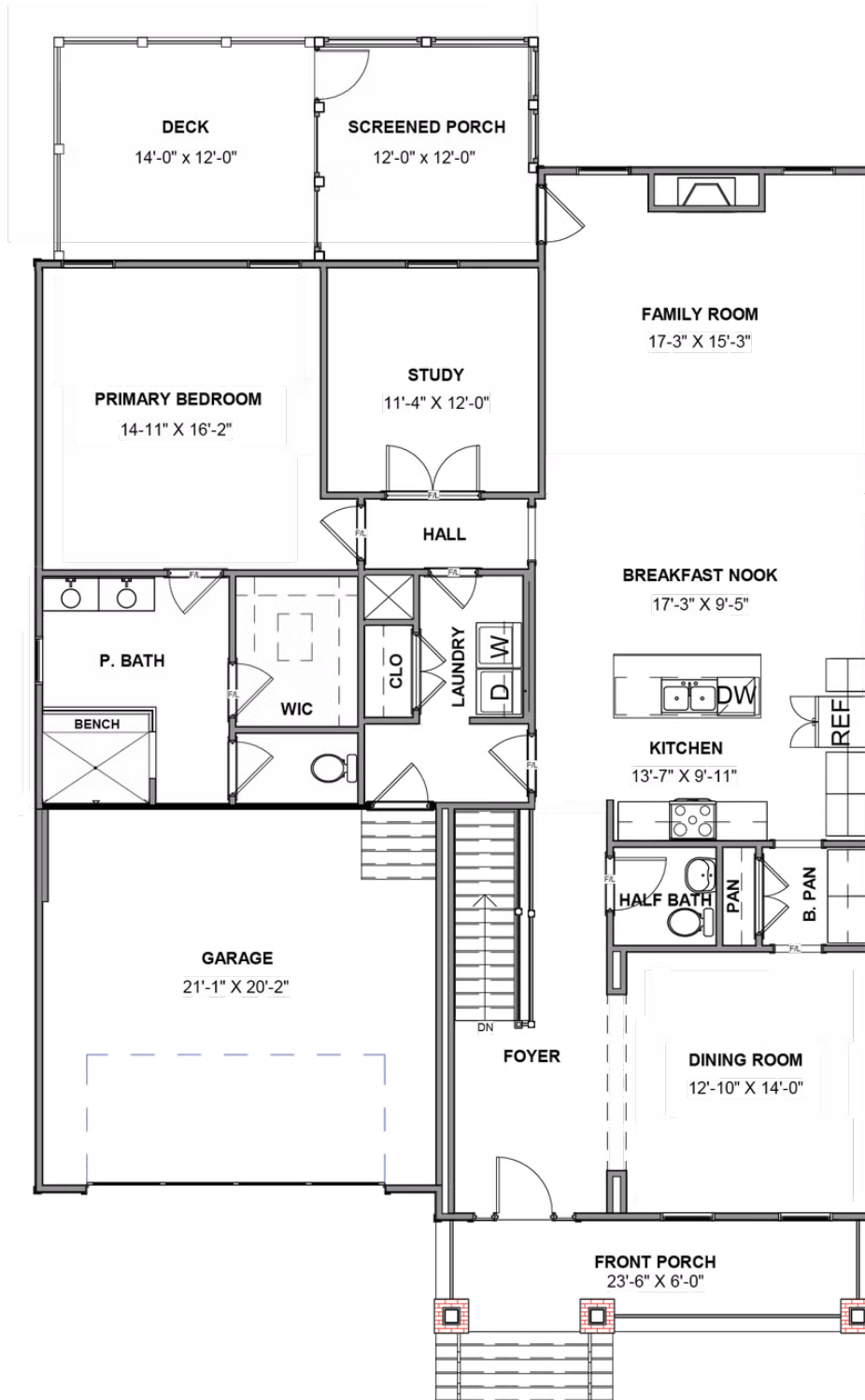
Think you've seen it all? Then you haven't seen the Linden Terrace, a 2-story plan with 3 bedrooms, 2.5 baths, and a 2-car garage. A front porch made for sipping lemonade and social graces welcomes you inside to a chef's dream kitchen offering a scenic vista overlooking both breakfast nook and family room with fireplace. A formal dining room and home study lend sophistication and flexibility, while a secluded first floor primary suite with Serenity primary bath and large walk-in closet offer a quiet escape. Enjoy the outdoor living on your screened porch and deck, providing a great space for outdoor entertaining and relaxing. Step downstairs to the terrace level where an expanded rec room, full bath, and two additional bedrooms blend playfulness, with easygoing comfort and everyday livability—while a large unfinished storage area is ready for whatever you can imagine.

Features of this Home

- Main level living
- Primary bedroom on main level with Serenity primary bath
- Finished walkout terrace (basement) level with extended rec room
- Kitchen features quartz countertops, convection gas range, and drawer microwave
- Screened porch
- Fireplace in family room
- LED recessed lighting with dimmer switch in family room, primary bedroom, and rec room

eagleofva.com

MAIN LEVEL



TERRACE LEVEL

