





1751 Kyles Way

AT THE PRESERVE SINGLE FAMILY HOMES



-  4 Bedrooms
-  2.5 Bathrooms
-  2674 Square Feet
-  2 Car Garage

\$666,493



MOVE-IN READY! Smart, stately, and dressed to impress, the Bradford is a new 2-story plan with 4 bedrooms, 2.5+ baths, a back deck, and over 2,600 square feet of gracious modern living. Step from front porch to foyer and into a feeling of home as fresh as the mountain air. A front study and formal dining room greet guests like proper hosts, inviting all to a vast panoramic roomscape where the smells of home cooking blend with the love of family and laughter of gatherings that go well past bedtime. As the night ends, head upstairs to your majestic primary suite with its epic dual-sink bath and linen closet, and a walk-in as big as the great outdoors. 3 additional bedrooms with walk-in closets, a full dual-sink bath, and second floor laundry ensure you never be lacking for space to stretch and room to grow.

Features of this Home

- Tall crawl space on basement homesite
- Serenity primary bathroom with enlarged shower and bench seat
- Hardwood stairs
- Fireplace with black granite surround in family room
- Luxury quartz countertops in kitchen
- Hardwood laminate flooring on entire first floor
- Beautiful ceramic tile in primary and secondary bathroom
- Convection gas range
- HD video package above fireplace
- LED recessed lights package with dimmer switch in kitchen and primary bedroom

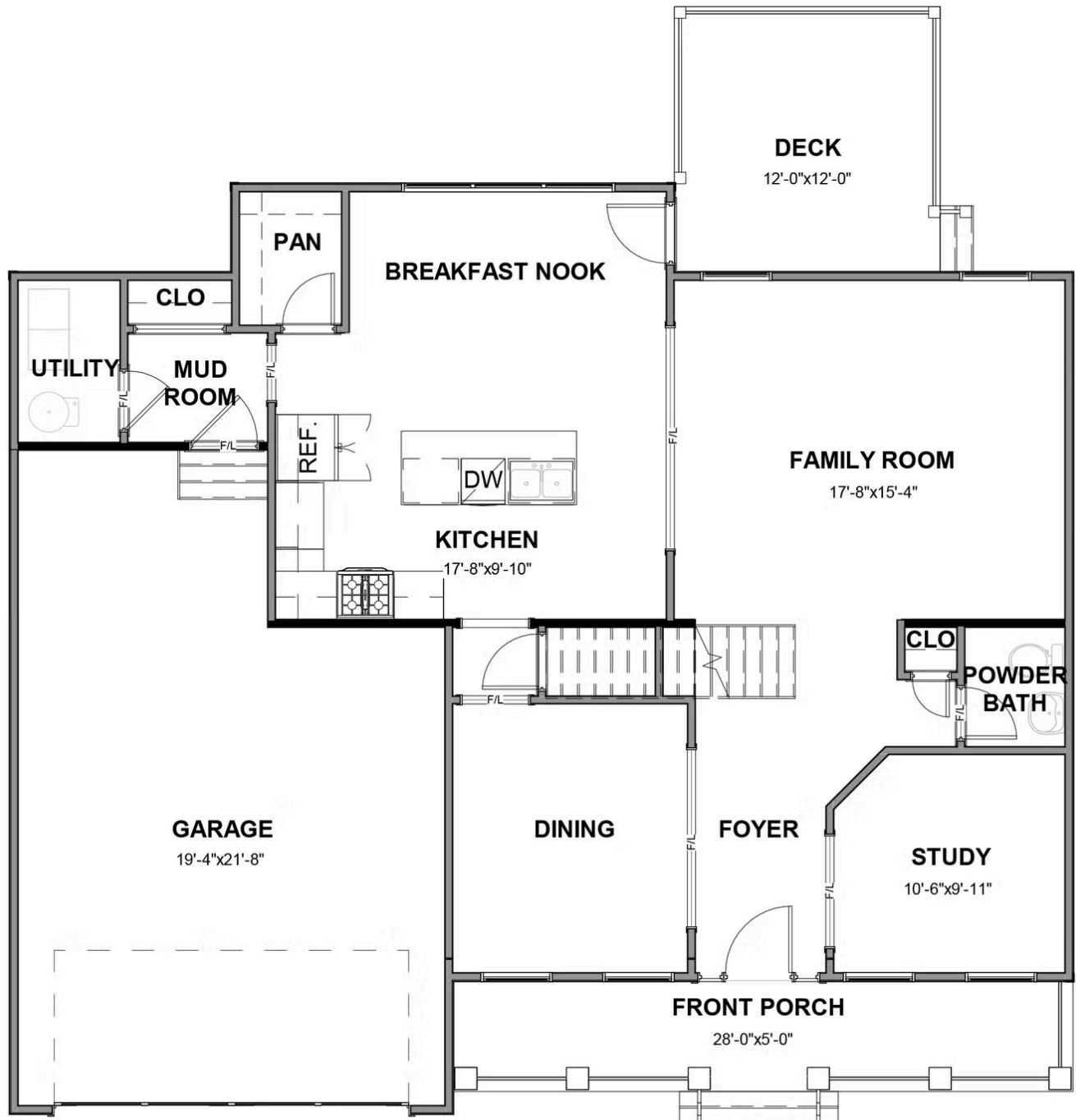
eagleofva.com

1751 Kyles Way

AT THE PRESERVE SINGLE FAMILY HOMES



FIRST FLOOR



eagleofva.com

SECOND FLOOR

