






THE Westminster

AT THE PRESERVE SINGLE FAMILY HOMES



-  3 - 5 Bedrooms
-  2.5 - 3 Bathrooms
-  2,641 Square Feet
-  2 Car Garage
-  2 Levels



The Westminster is a 2 story single family new home floor plan with 3+ bedrooms, 2.5+ baths, and over 2,600 square feet of living space to personalize for your lifestyle. Walk in the front door and you'll find a foyer flanked by a formal Dining Room and Study. Enter your spacious Family Room and discover that it flows right into the Kitchen with a large island, perfect for cooking and entertaining. Tucked away you'll find your first floor primary bedroom suite which features a huge walk-in closet and a spacious primary bathroom with multiple layouts. To finish out the first floor, you can add a screen porch, a deck, or a wrapped porch outside if you desire. The second floor of the home features a spacious loft and 2 additional bedrooms with walk-in closets. Add more bedrooms and make it a 5 bedroom home if you need more space!

eagleofva.com

THE Westminster

AT THE PRESERVE SINGLE FAMILY HOMES



Arts & Crafts



Craftsman



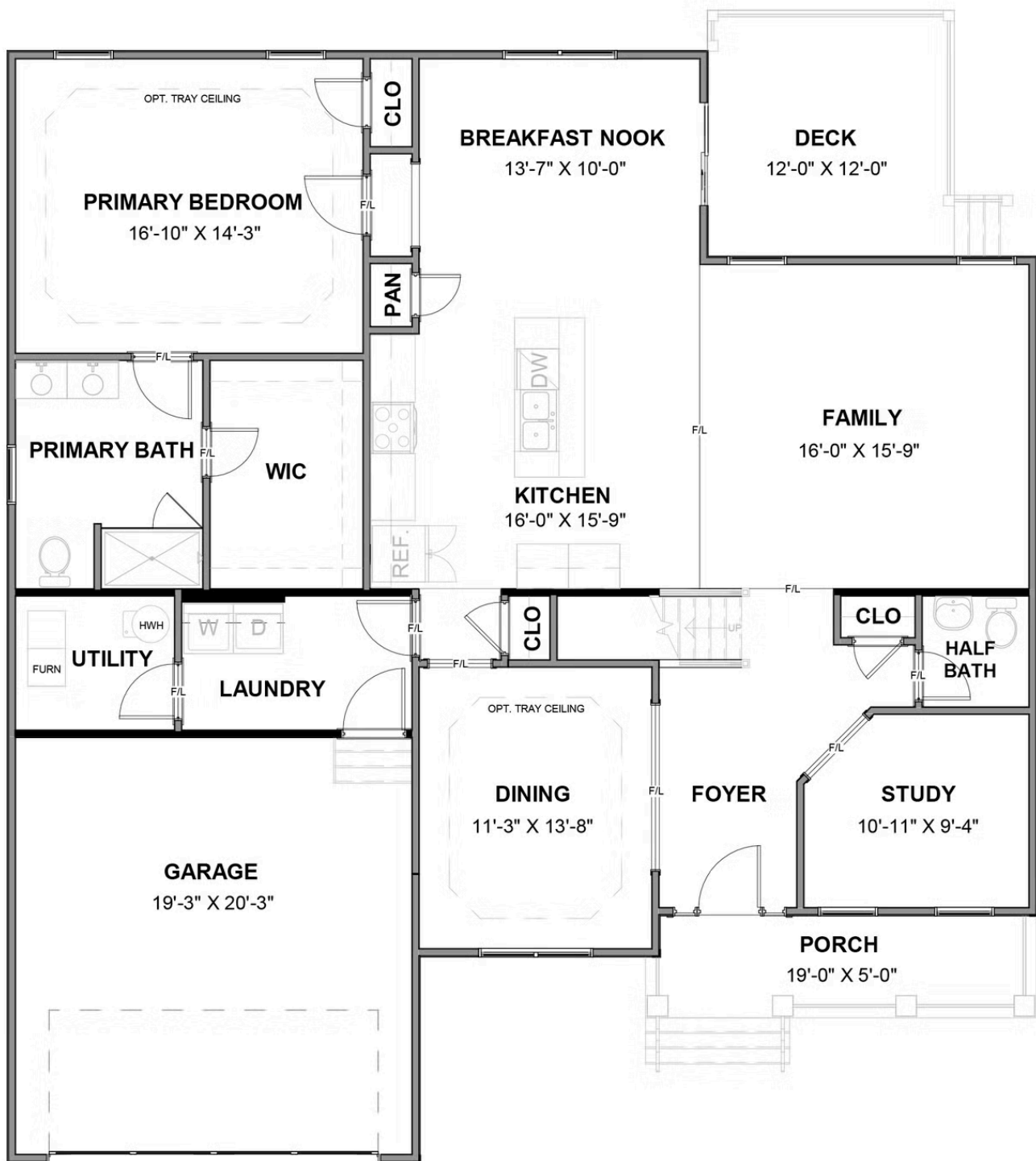
European



Folk Victorian

eagleofva.com

FIRST FLOOR



SECOND FLOOR

