





1885 Colby Avenue

AT THE PRESERVE TOWNHOMES AND DUPLEXES



-  2 Bedrooms
-  2.0 Bathrooms
-  1692 Square Feet
-  2 Car Garage

\$494,442



Brand new floorplan! The Lillie is the one level townhome you've been looking for. Complete with 2-car garage, the Lillie provides just the right amount of space. Enter from your garage and into the laundry room and mud room, complete with an additional storage closet. A study with French doors provides the perfect space to set up your home office, play room for the grandkids, or anything that renews your energy. The open concept layout offers a kitchen with pantry and large island overlooking the dining area and family room, perfect for keeping everyone connected. Your primary bedroom is tucked down a hallway with a spacious primary bath and large walk-in closet. At the front of the home you'll find an additional bedroom and full bath.

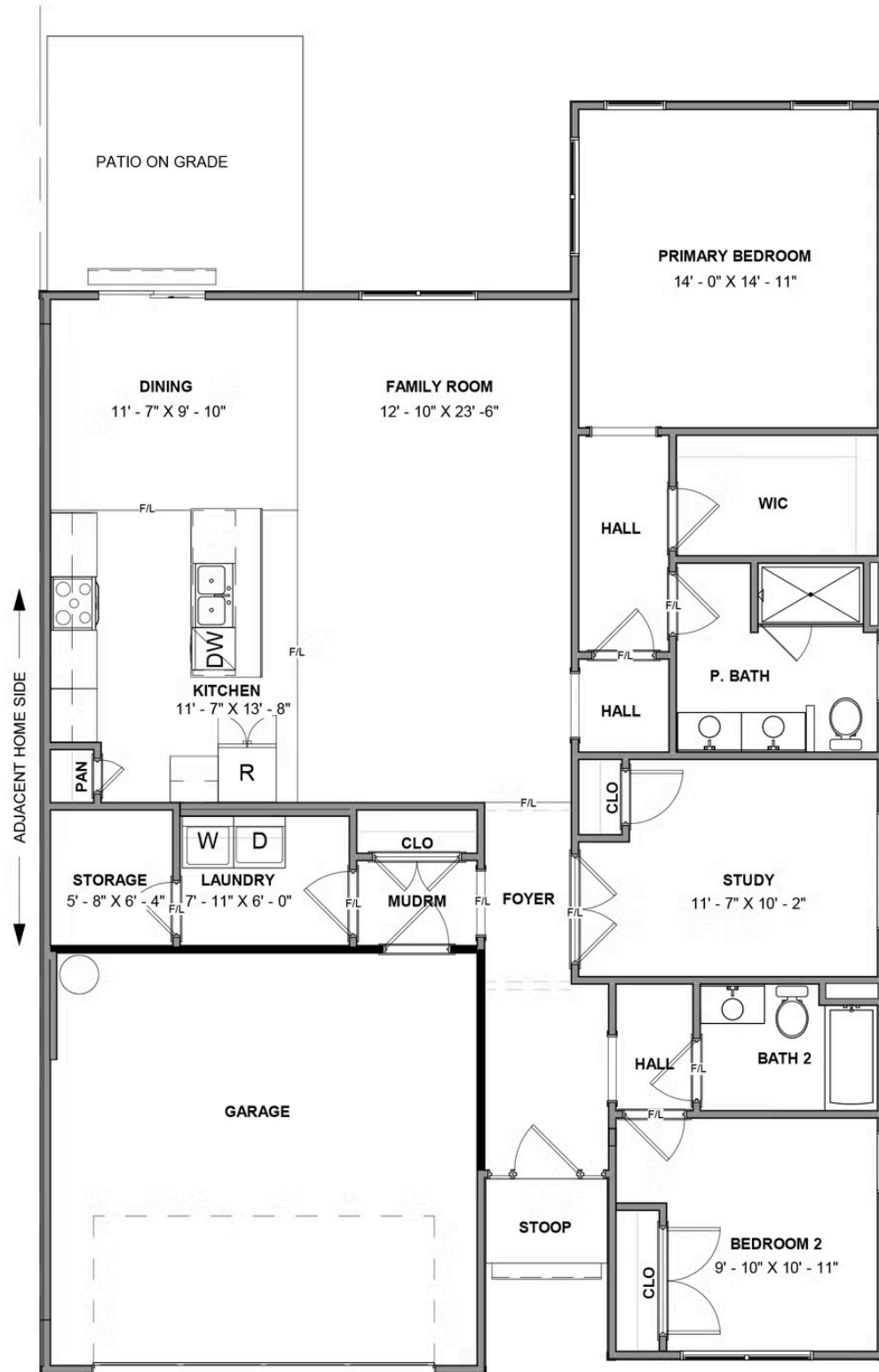
eagleofva.com

1885 Colby Avenue

AT THE PRESERVE TOWNHOMES AND DUPLEXES



FIRST FLOOR



eagleofva.com