

1965 Kyles Way

AT THE PRESERVE TOWNHOMES AND DUPLEXES



-  3 Bedrooms
-  3.0 Bathrooms
-  2330 Square Feet

\$549,858



Brand new floorplan! Welcome home to the Brady, a 2-story townhome with 2-car garage and plenty of room to spread out and call your own. Enter through the garage and into your laundry/mud room. The open concept kitchen features a large island overlooking the family room, spacious pantry, and access to the dining room. Tucked off the family room is your primary bedroom retreat with large primary bath and walk-in closet. A second bedroom and full bath can be found at the front of the home. Head on up to your second floor where you'll find a loft, third bedroom with walk-in closet, and full bath.

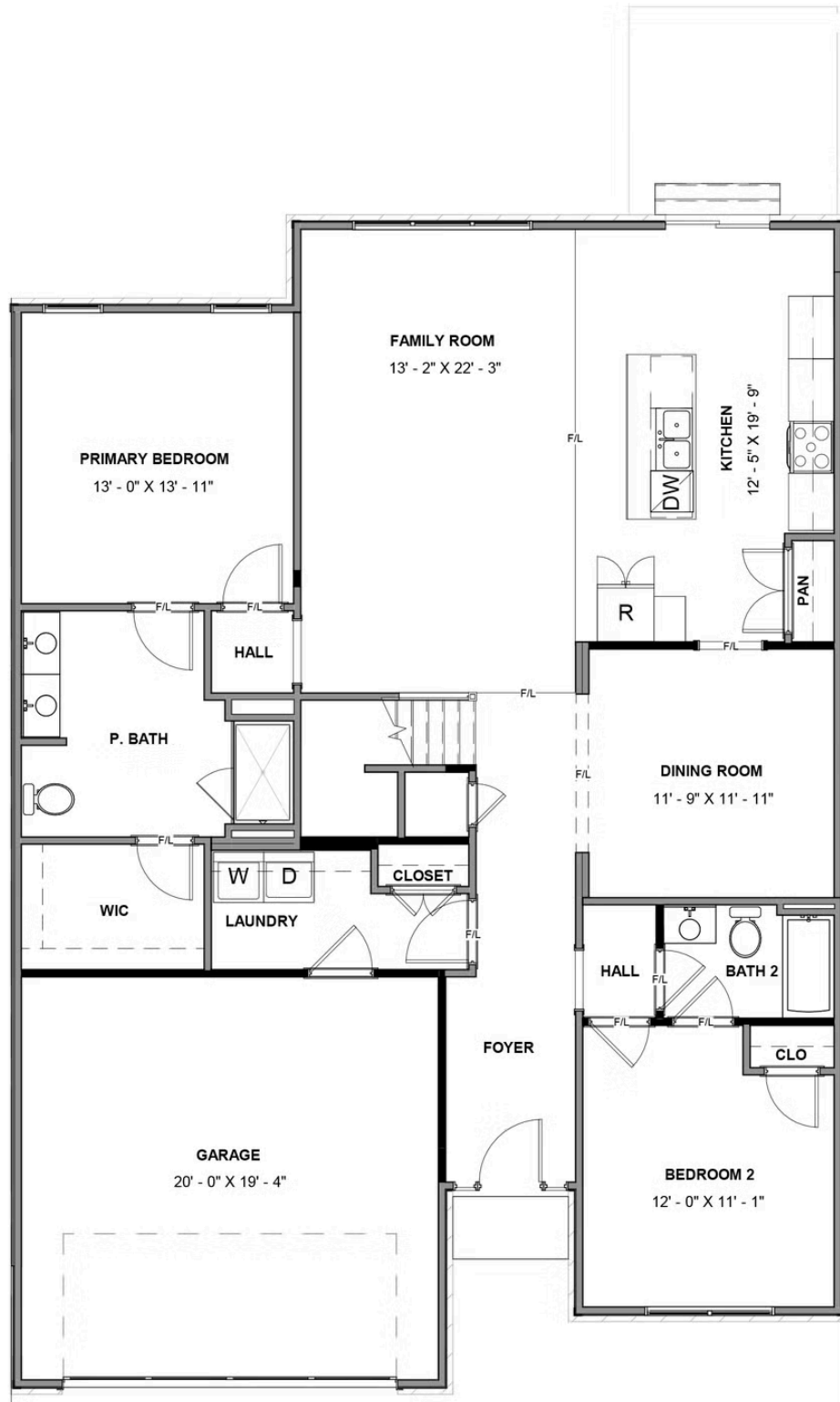
eagleofva.com

1965 Kyles Way

AT THE PRESERVE TOWNHOMES AND DUPLEXES



FIRST FLOOR



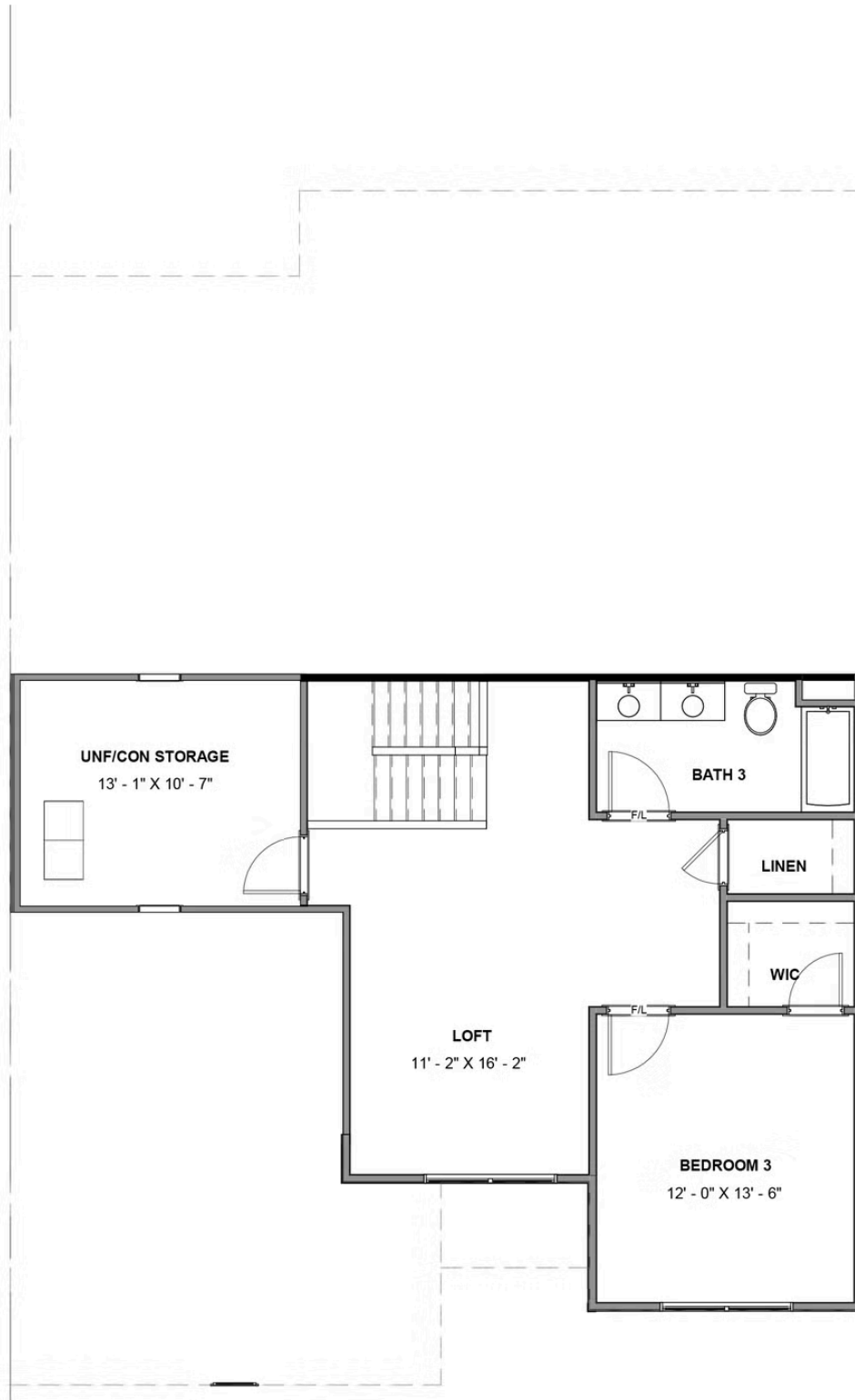
eagleofva.com

1965 Kyles Way

AT THE PRESERVE TOWNHOMES AND DUPLEXES



SECOND FLOOR



eagleofva.com