

2030 Kyles Way

AT THE PRESERVE TOWNHOMES AND DUPLEXES



-  2 Bedrooms
-  2.5 Bathrooms
-  1271 Square Feet

\$345,162



MOVE-IN READY! The Millcreek is a spacious 2-story new construction townhome for sale in Blacksburg, VA. Enjoy open concept main level living flowing from your family room to an eat in dining room, all the way to your functional kitchen with island! Head up to the second floor where you will find dual primary bedrooms each with their own private bath, as well as a laundry room. Enjoy scenic mountain views from your front porch just minutes from downtown Blacksburg, schools, shopping, and easy access to 460!

Features of this Home

- Hardwood stairs
- LED recessed lighting package in kitchen
- Luxury cabinets and granite countertops in kitchen
- Laminate hardwood flooring on entire first floor
- Ceramic tile backsplash in kitchen
- Floating open shelves in kitchen beside refrigerator enclosure

eagleofva.com

2030 Kyles Way

AT THE PRESERVE TOWNHOMES AND DUPLEXES



OPTIONAL 3050 DINING ROOM WINDOW FOR END UNITS ONLY

LIVING
11'-2" X 14'-6"

DINING
15'-0" X 9'-10"

KITCHEN

HALF BATH

MECH

UNF STOR

FRONT PORCH

SOFFIT

CONC. PAD

UP

CLO

OPTIONAL 3050 DINING ROOM WINDOW FOR END UNITS ONLY

eagleofva.com

This information is deemed reliable but not guaranteed. All details, dimensions, square footage, illustrations and pricing are approximate and may vary from actual plans and specifications. Contact an Eagle Sales Consultant for details. Current information as of 18th April 2025

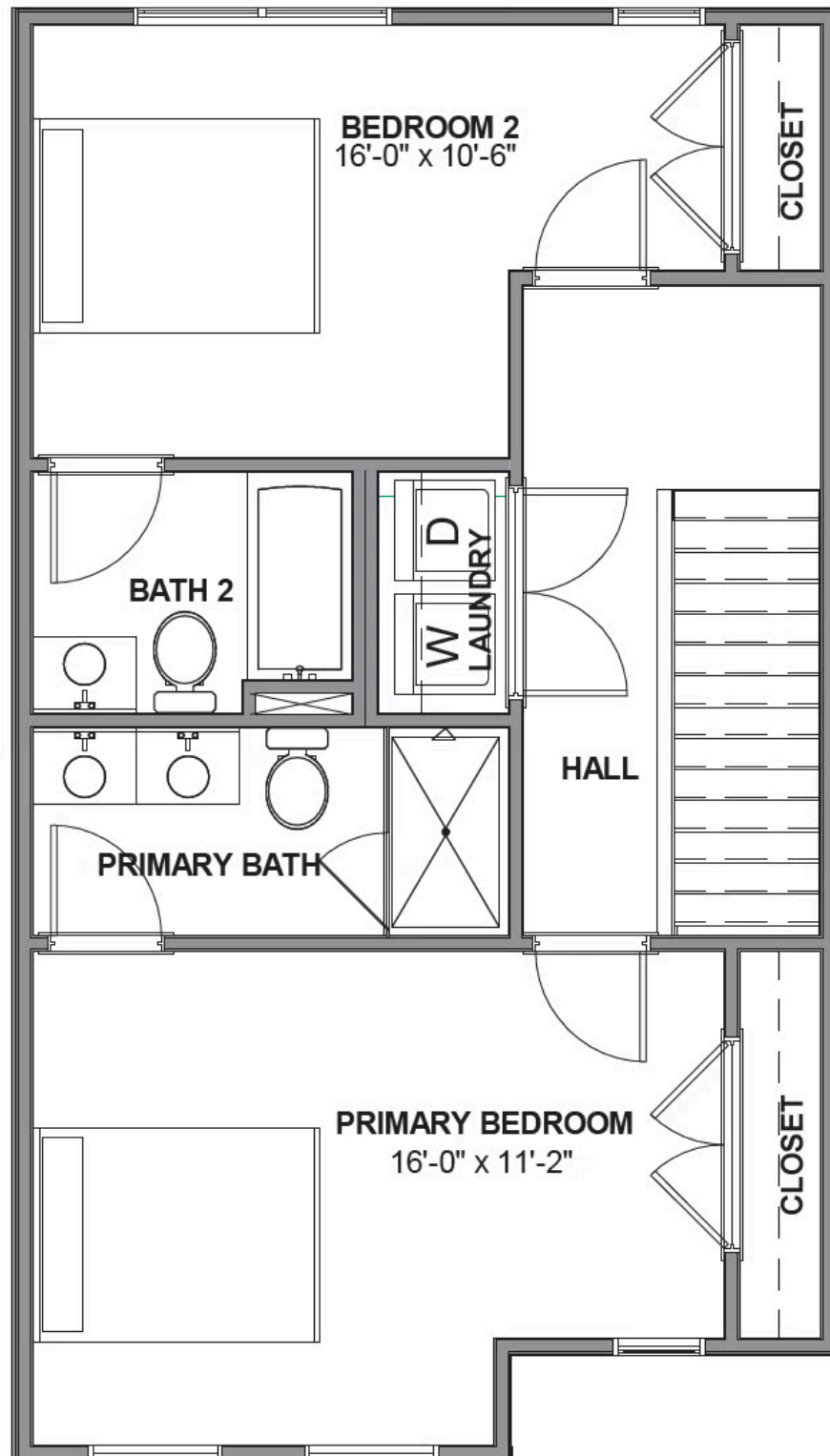
2030 Kyles Way

AT THE PRESERVE TOWNHOMES AND DUPLEXES



eagle

SECOND FLOOR



eagleofva.com

This information is deemed reliable but not guaranteed. All details, dimensions, square footage, illustrations and pricing are approximate and may vary from actual plans and specifications. Contact an Eagle Sales Consultant for details. Current information as of 18th April 2025