






# THE Millcreek with 2-Car Garage

AT THE PRESERVE TOWNHOMES AND DUPLEXES



-  2 - 3 Bedrooms
-  2.5 Bathrooms
-  1,421 Square Feet
-  2 Car Garage
-  3 Levels



**Brand new to The Preserve Townhomes - Millcreek with 2-car garage and basement!** The Millcreek with 2-car garage is a spacious 3-story new construction townhome for sale in Blacksburg, VA. Enjoy open concept main level living flowing from your family room to an eat in dining room, all the way to your functional kitchen with island! Head up to the second floor where you will find dual primary bedrooms each with their own private bath, as well as a laundry room. There is an option to add a mud room to the first floor which gives you the opportunity for three bedrooms upstairs instead. Head down to the basement level where you will find a finished flex room and your 2-car garage. Enjoy scenic mountain views from your front porch just minutes from downtown Blacksburg, schools, shopping, and easy access to 460!

[eagleofva.com](http://eagleofva.com)

# THE Millcreek with 2-Car Garage

AT THE PRESERVE TOWNHOMES AND DUPLEXES

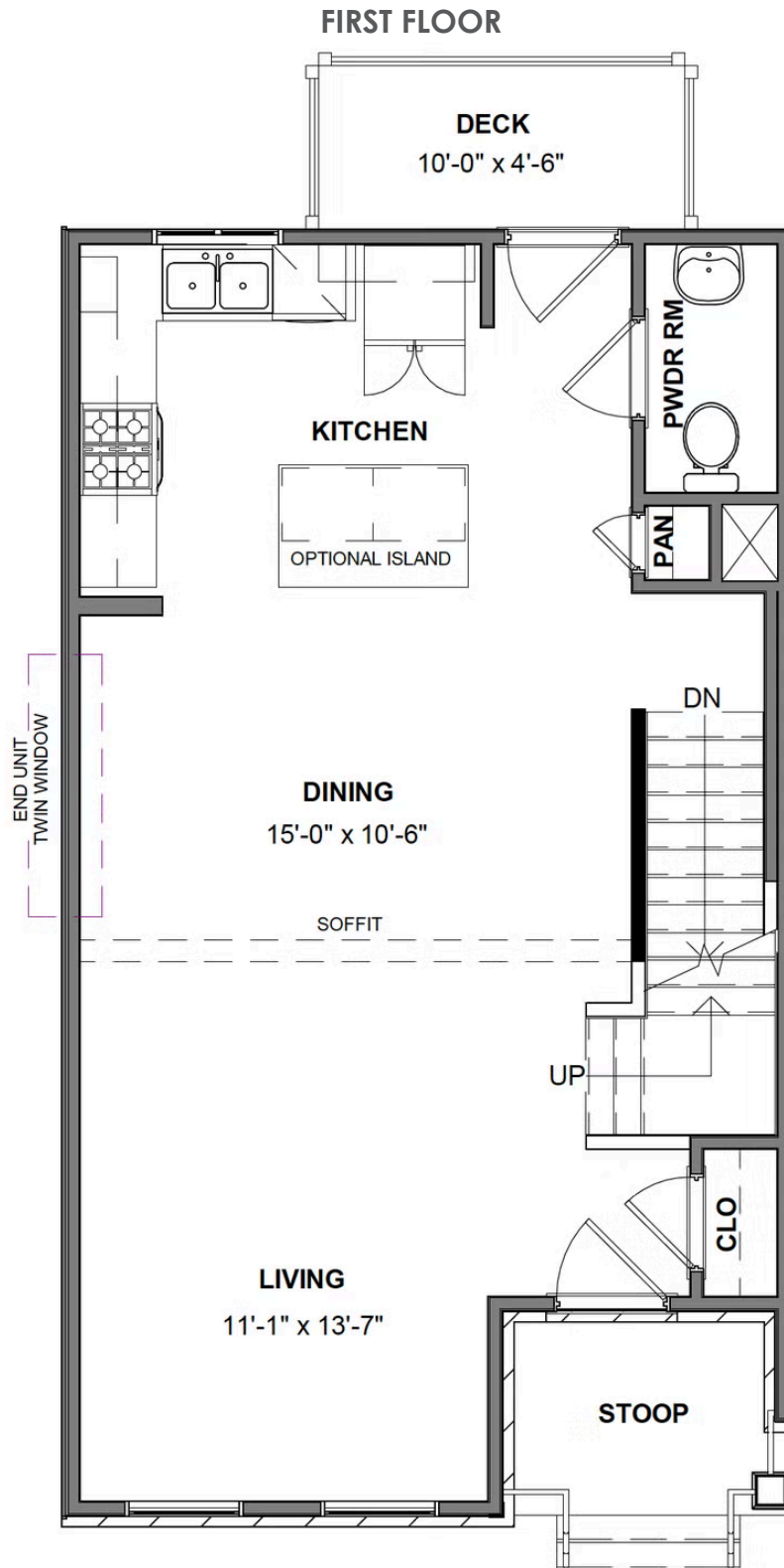


[eagleofva.com](http://eagleofva.com)

This information is deemed reliable but not guaranteed. All details, dimensions, square footage, illustrations and pricing are approximate and may vary from actual plans and specifications. Contact an Eagle Sales Consultant for details. Current information as of 19th April 2025

# THE Millcreek with 2-Car Garage

AT THE PRESERVE TOWNHOMES AND DUPLEXES



[eagleofva.com](http://eagleofva.com)

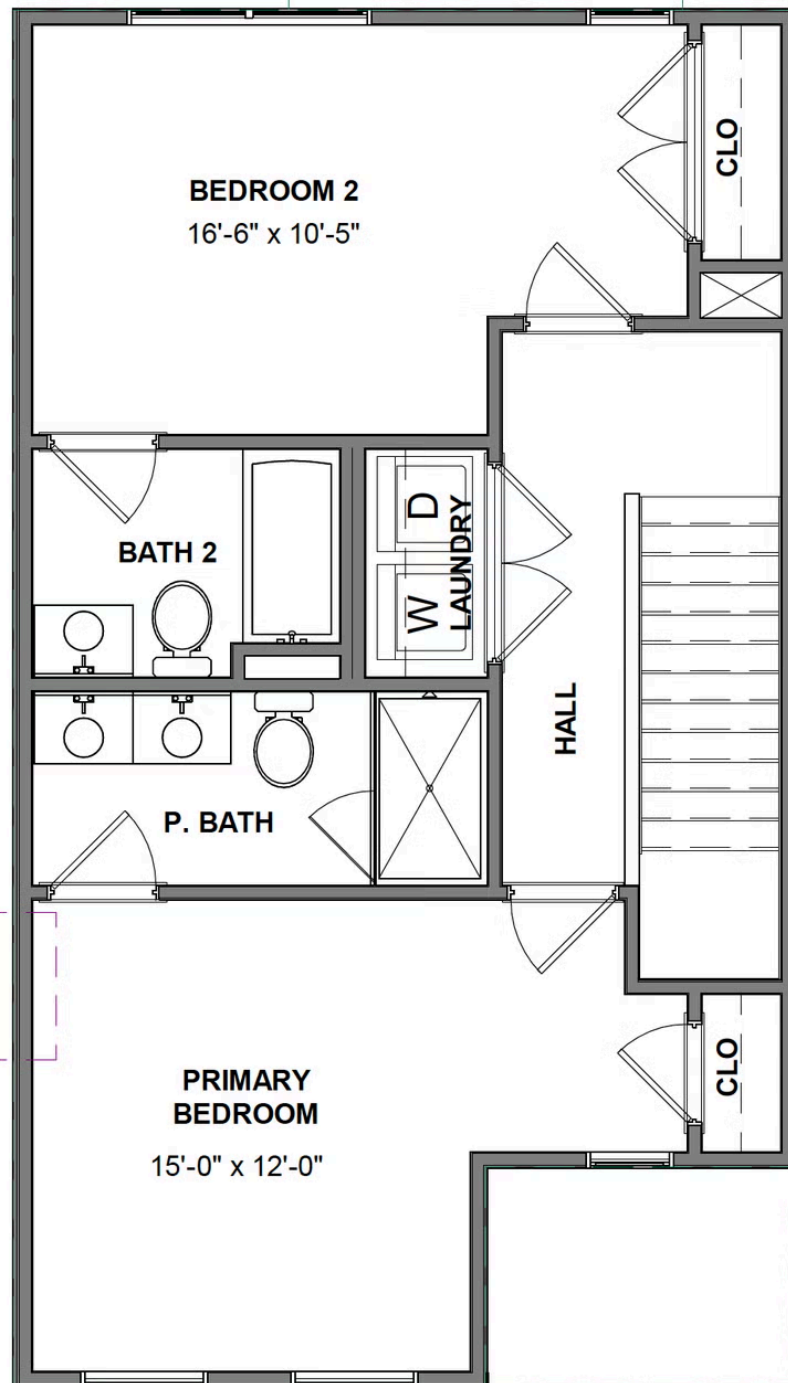
This information is deemed reliable but not guaranteed. All details, dimensions, square footage, illustrations and pricing are approximate and may vary from actual plans and specifications. Contact an Eagle Sales Consultant for details. Current information as of 19th April 2025

# THE Millcreek with 2-Car Garage

AT THE PRESERVE TOWNHOMES AND DUPLEXES



## SECOND FLOOR

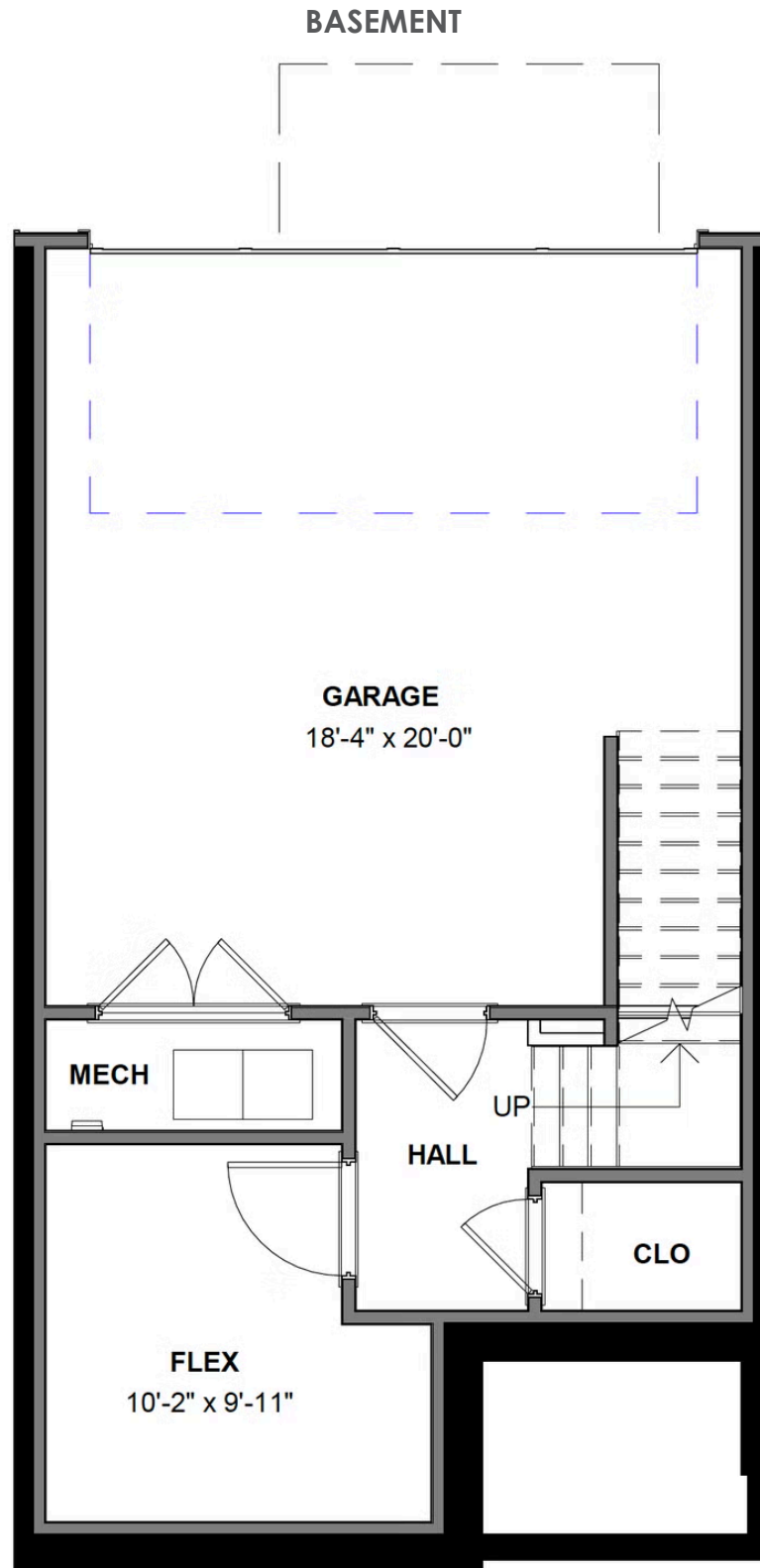


[eagleofva.com](http://eagleofva.com)

This information is deemed reliable but not guaranteed. All details, dimensions, square footage, illustrations and pricing are approximate and may vary from actual plans and specifications. Contact an Eagle Sales Consultant for details. Current information as of 19th April 2025

# THE Millcreek with 2-Car Garage

AT THE PRESERVE TOWNHOMES AND DUPLEXES



[eagleofva.com](http://eagleofva.com)

This information is deemed reliable but not guaranteed. All details, dimensions, square footage, illustrations and pricing are approximate and may vary from actual plans and specifications. Contact an Eagle Sales Consultant for details. Current information as of 19th April 2025