




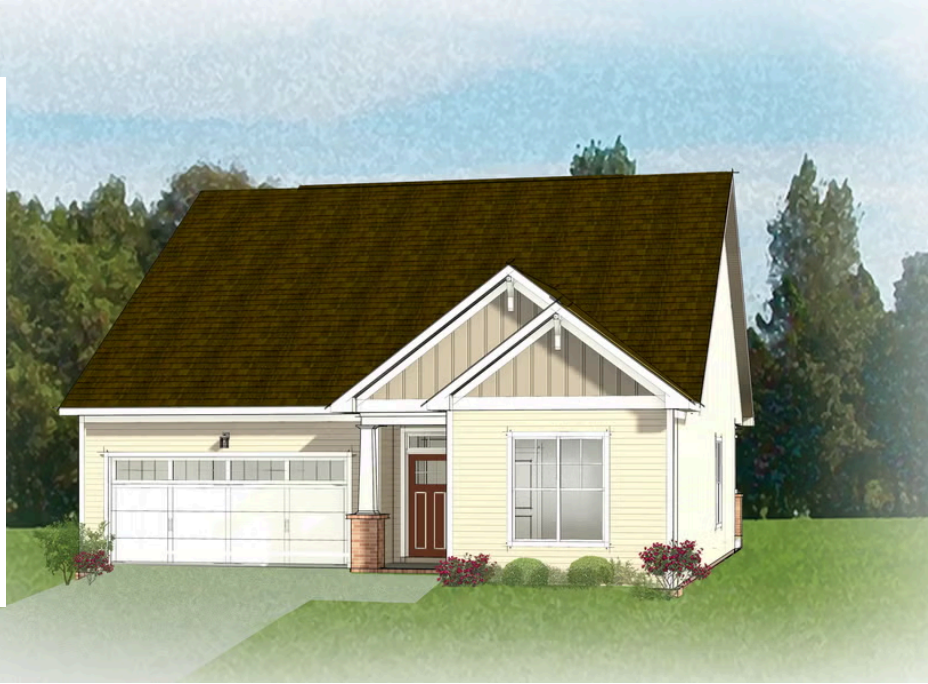


THE Azalea Ranch

AT WOMACK GREEN



-  2 Bedrooms
-  2 Bathrooms
-  1,561 Square Feet
-  2 Car Garage
-  1 Levels



Welcome to the Azalea Ranch, the one-level home you've been searching for. With a 2-car garage and open flow floor plan, you'll find all the space you need. Enjoy a kitchen with corner walk-in pantry and large kitchen island overlooking the breakfast nook and family room beyond, you're set up for a holiday gathering or cozy night in. A patio just off the family room gives you the perfect retreat for sipping your morning coffee or afternoon sweet tea. You'll find your primary suite tucked away in the rear of the home with a huge walk-in closet and spacious primary bath with multiple layouts to choose from. A separate water closet and linen closet finish out the space. At the front of the home you will find an additional bedroom and full bath. A walk-in laundry room is located near the primary bedroom.

eagleofva.com

THE Azalea Ranch

AT WOMACK GREEN

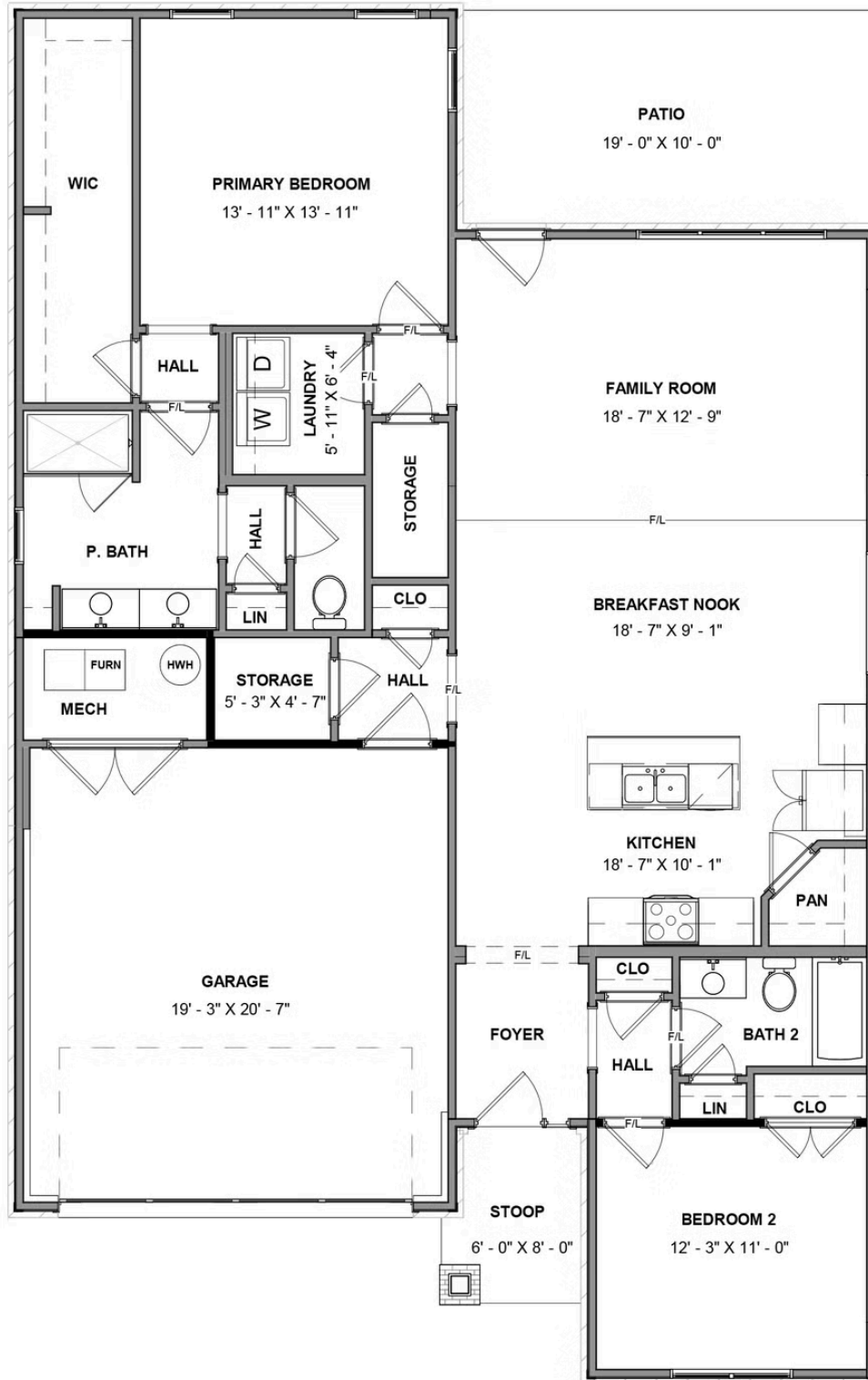


eagleofva.com

This information is deemed reliable but not guaranteed. All details, dimensions, square footage, illustrations and pricing are approximate and may vary from actual plans and specifications. Contact an Eagle Sales Consultant for details. Current information as of 22nd December 2024

THE Azalea Ranch

AT WOMACK GREEN



eagleofva.com