





1017 Round Meadow Drive

AT THE MEADOWS



-  3 Bedrooms
-  2.5 Bathrooms
-  2519 Square Feet
-  2 Car Garage

\$630,719



Brand new floor plan! The Pearl Terrace offers the perfect blend of comfort and functionality, catering to modern living with both style and ease. The main level features a spacious family room, a gourmet kitchen with breakfast nook that opens to a deck, and a formal dining room. The secluded first floor primary suite includes a walk-in closet and private bath, while a convenient laundry room and half bath finish out the main level. The terrace (basement) level adds two cozy bedrooms, a full bath, generous unfinished storage, and a large rec room for more room to spread out while entertaining or relaxing. And an attached 2-car garage gives you even more space.

Features of this Home

- Quartz kitchen countertops
- Serenity Primary Bath
- GE Stainless Steel gas range with chimney hood
- Expanded rec room on terrace level
- Contemporary crown molding

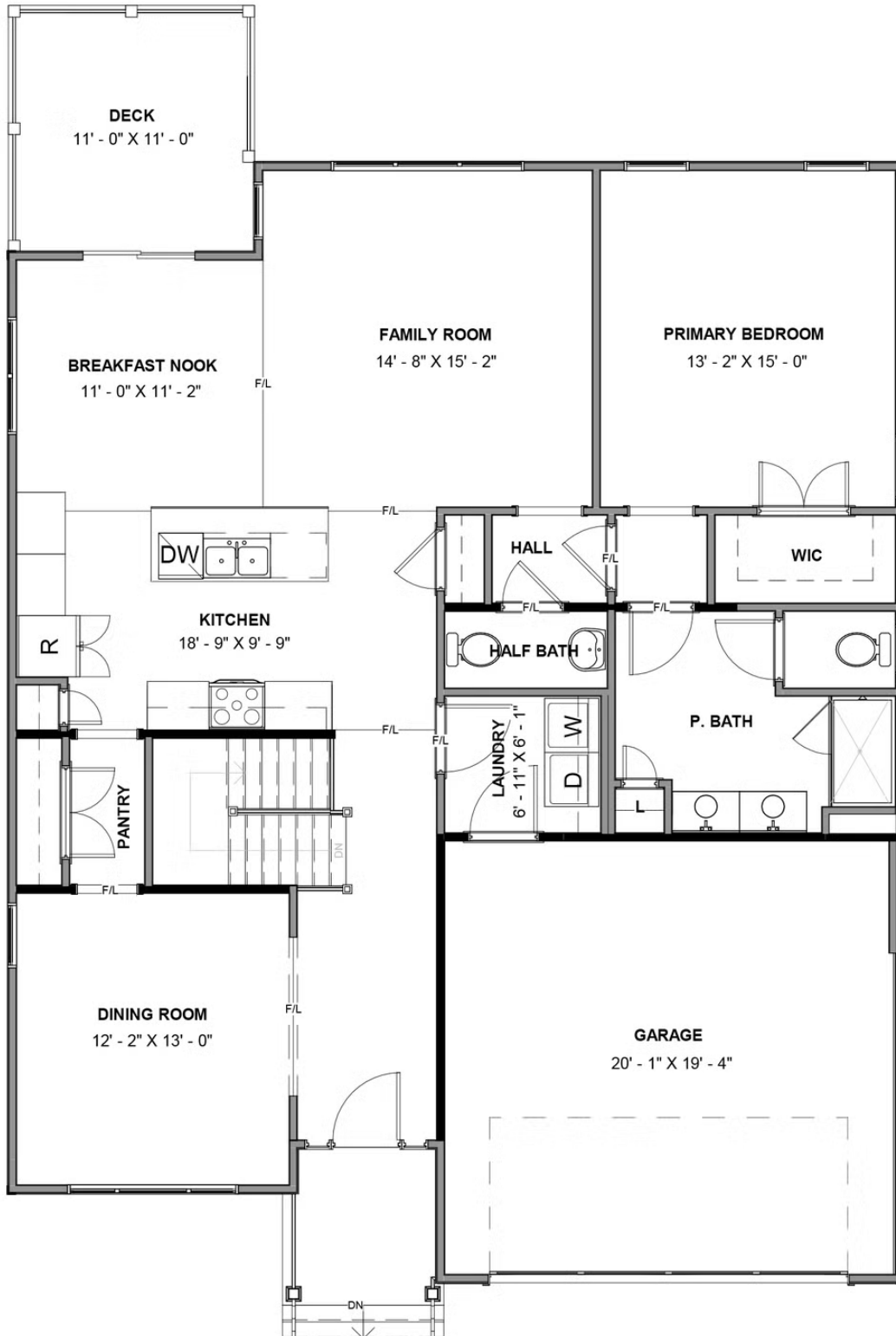
eagleofva.com

1017 Round Meadow Drive

AT THE MEADOWS



MAIN LEVEL



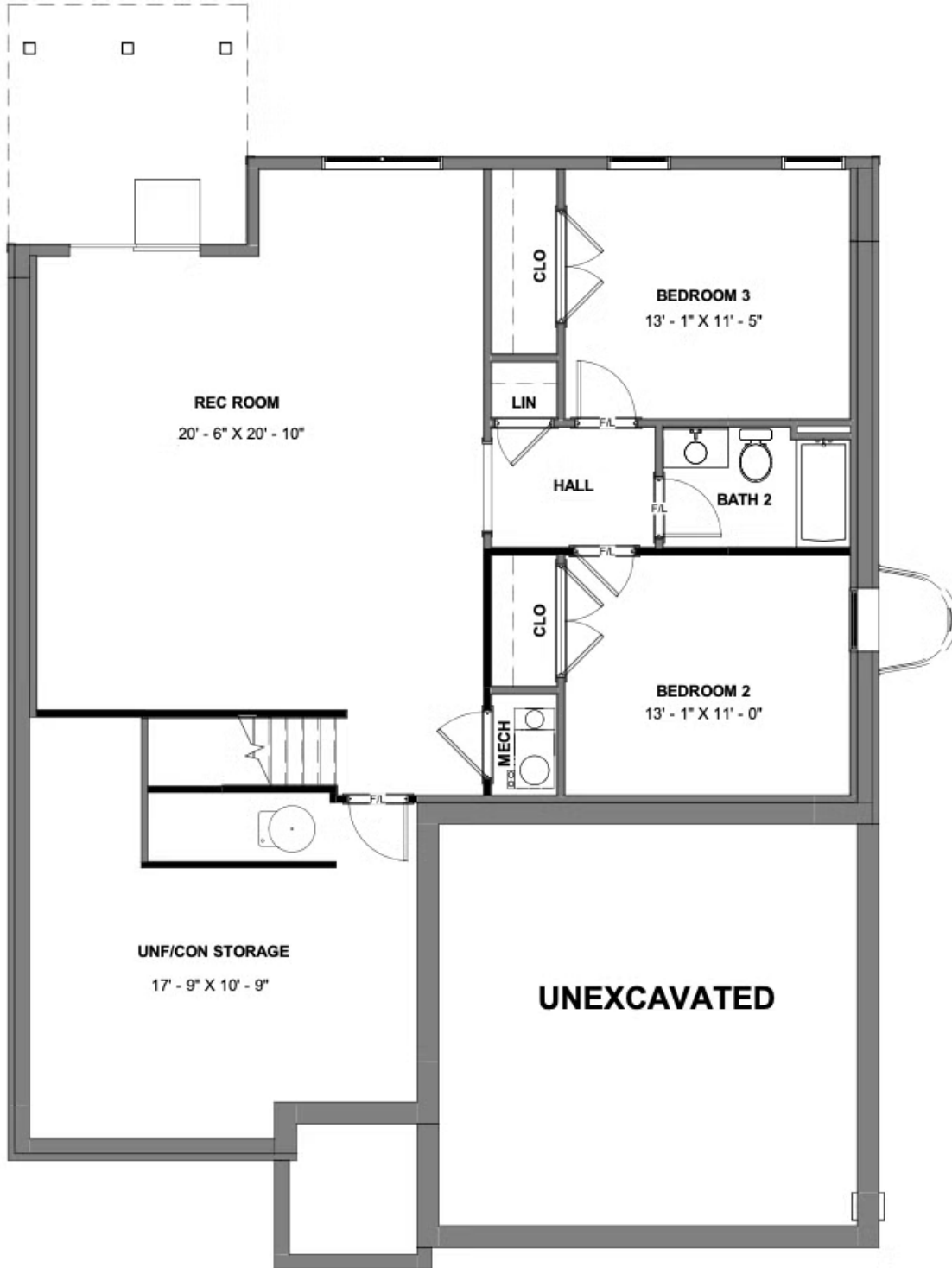
eagleofva.com

1017 Round Meadow Drive

AT THE MEADOWS



TERRACE LEVEL



eagleofva.com