





1135 Round Meadow Drive

AT THE MEADOWS



-  3 Bedrooms
-  2.5 Bathrooms
-  2920 Square Feet
-  2 Car Garage

\$699,900



Think you've seen it all? Then you haven't seen Linden Terrace, a 2-story plan with 3 bedrooms, 2.5 baths, a 2-car garage, and 2,700 glorious square feet of pure home happiness. A front porch made for sipping lemonade and social graces welcomes you inside to a chef's dream kitchen offering a scenic vista overlooking both breakfast nook and family room. A formal dining room and home study lend sophistication and flexibility, while a secluded first floor primary suite with prodigious walk-in closet and dual-sink bath offer a quiet escape. Step downstairs to the terrace level where a rec room, full bath, and two additional bedrooms blend playfulness, with easygoing comfort and everyday livability—while a cavernous unfinished storage area is ready for whatever you can imagine.

Features of this Home

- Main Level Living
- Primary Bedroom on Main Level with Serenity Bath
- Fireplace in Family Room
- French Doors in Study
- LED Recessed Lighting Package with Dimmer Switch in Family Room, Primary Bedroom, and Rec Room
- High Definition Video Package in Family Room
- Hardwood Floors Throughout Main Level
- Kitchen Features Granite Countertops and Convection Gas Range

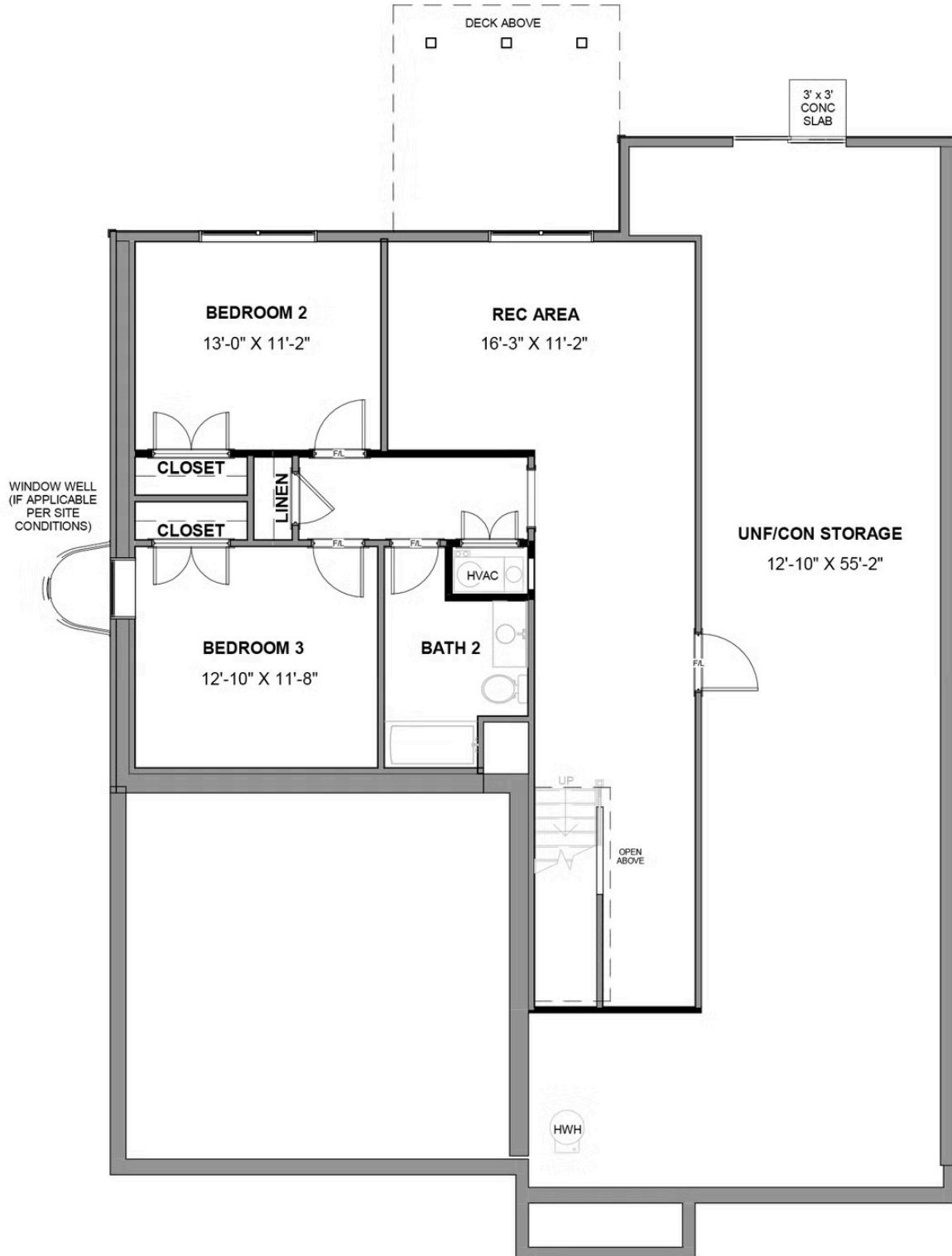
eagleofva.com

1135 Round Meadow Drive

AT THE MEADOWS



TERRACE LEVEL



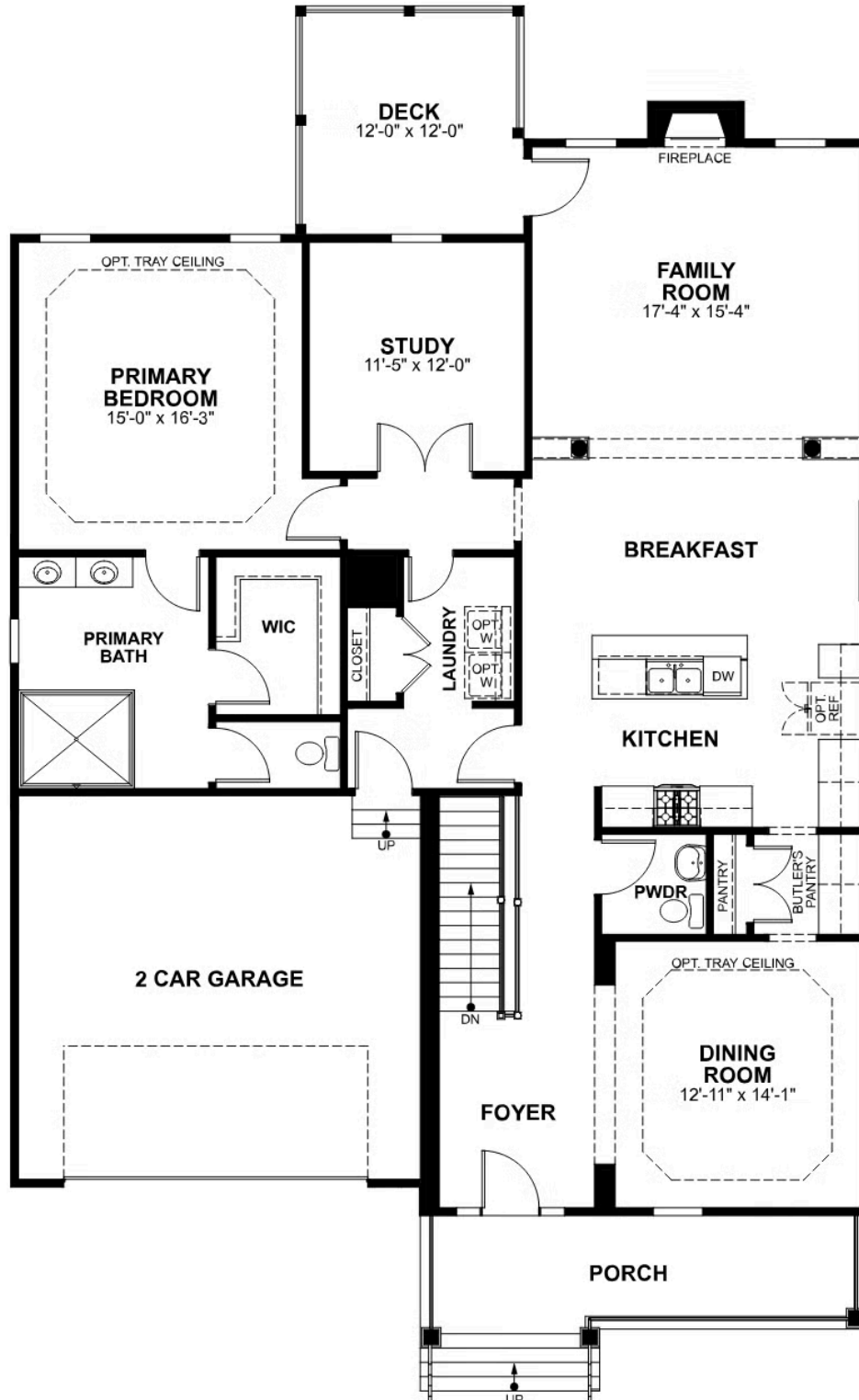
eagleofva.com

1135 Round Meadow Drive

AT THE MEADOWS



MAIN LEVEL



eagleofva.com