






THE Belmont Terrace

AT THE MEADOWS



-  2 - 4 Bedrooms
-  2.5 - 3 Bathrooms
-  1,806 Square Feet
-  2 Car Garage
-  2 Levels



The Belmont Terrace is a 2 story new home floor plan with 3-4 bedrooms, 3.5 bathrooms, and a 2-car garage. This unique plan allows you to enter on the main floor which features an open-flowing dining room and living room perfect for entertaining. This large space flows directly into the Kitchen with the option to add an island. The primary bedroom suite is also on this level with a luxurious walk-in closet and spacious primary bathroom. There is also a second Bedroom that can be converted into a Den. You'll head down the stairs to the terrace level where there are huge unfinished storage spaces. These spaces can be converted into a bedroom, a media room, or a large recreation room.

eagleofva.com

THE Belmont Terrace

AT THE MEADOWS



Traditional



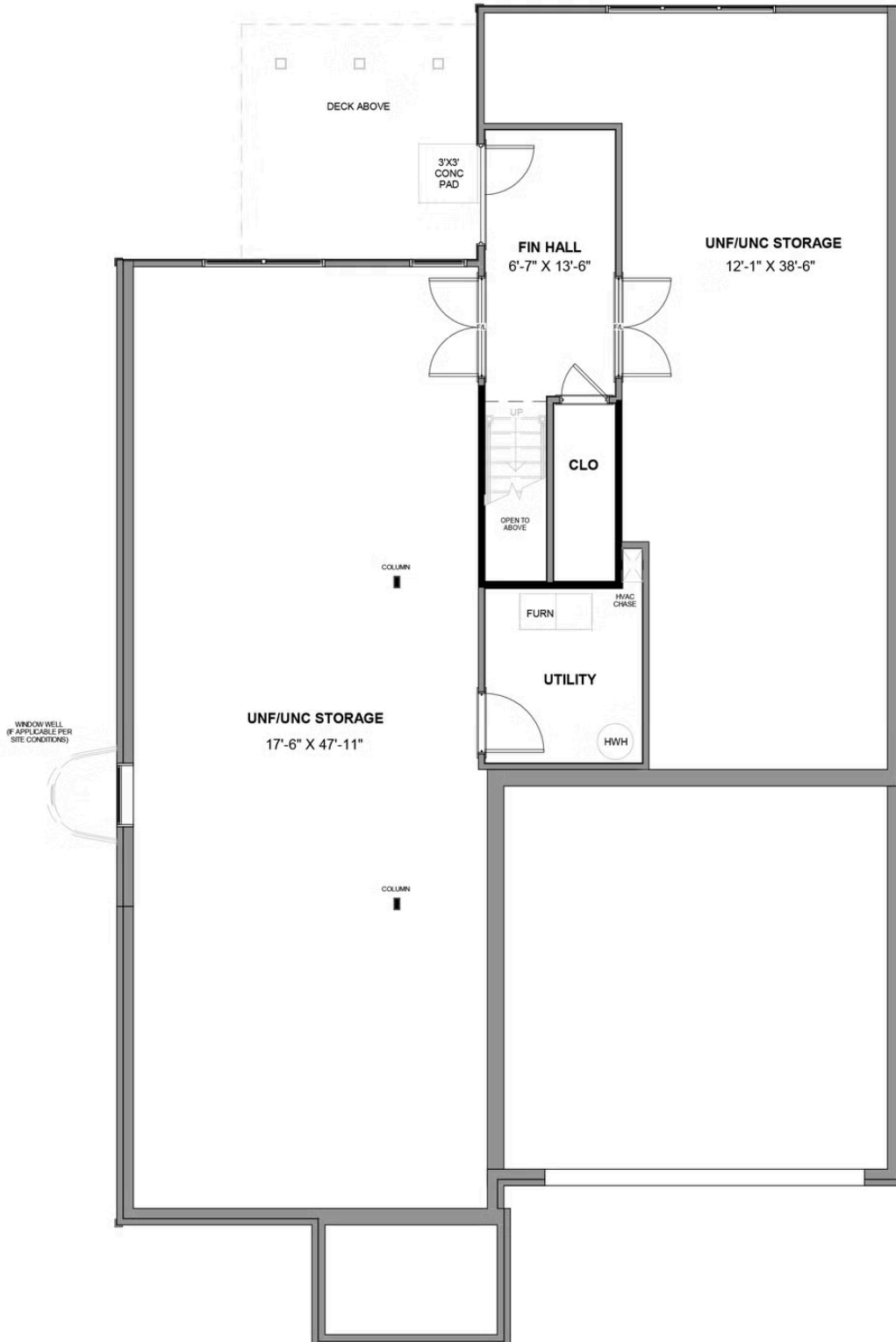
Arts & Crafts



Craftsman

eagleofva.com

TERRACE LEVEL



MAIN LEVEL

