





7560 Hutton Circle

AT PARKSIDE VILLAGE



-  3 Bedrooms
-  2.5 Bathrooms
-  3300 Square Feet
-  2 Car Garage

\$769,900



Think you've seen it all? Then you haven't seen Linden Terrace, a 2-story plan with 3 bedrooms, 2.5 baths, a 2-car garage, and over 3,300 glorious square feet of pure home happiness. A front porch made for sipping lemonade and social graces welcomes you inside to a chef's dream kitchen offering a scenic vista overlooking both breakfast nook and family room with fireplace. The kitchen and breakfast nook have been expanded to give you even more room to enjoy. A formal dining room and home study lend sophistication and flexibility, while a secluded first floor primary suite with spacious walk-in closet and Serenity primary bath offer a quiet escape. Step downstairs to the terrace level where an expanded rec room, full bath, and two additional bedrooms blend playfulness, with easygoing comfort and everyday livability—while a cavernous unfinished storage area is ready for whatever you can imagine.

Features of this Home

- Large Homesite with Wooded Backyard
- Huge Side Yard
- Kitchen/breakfast nook expansion
- Expanded rec room in basement
- Serenity primary bath
- Fireplace in family room
- High definition video package

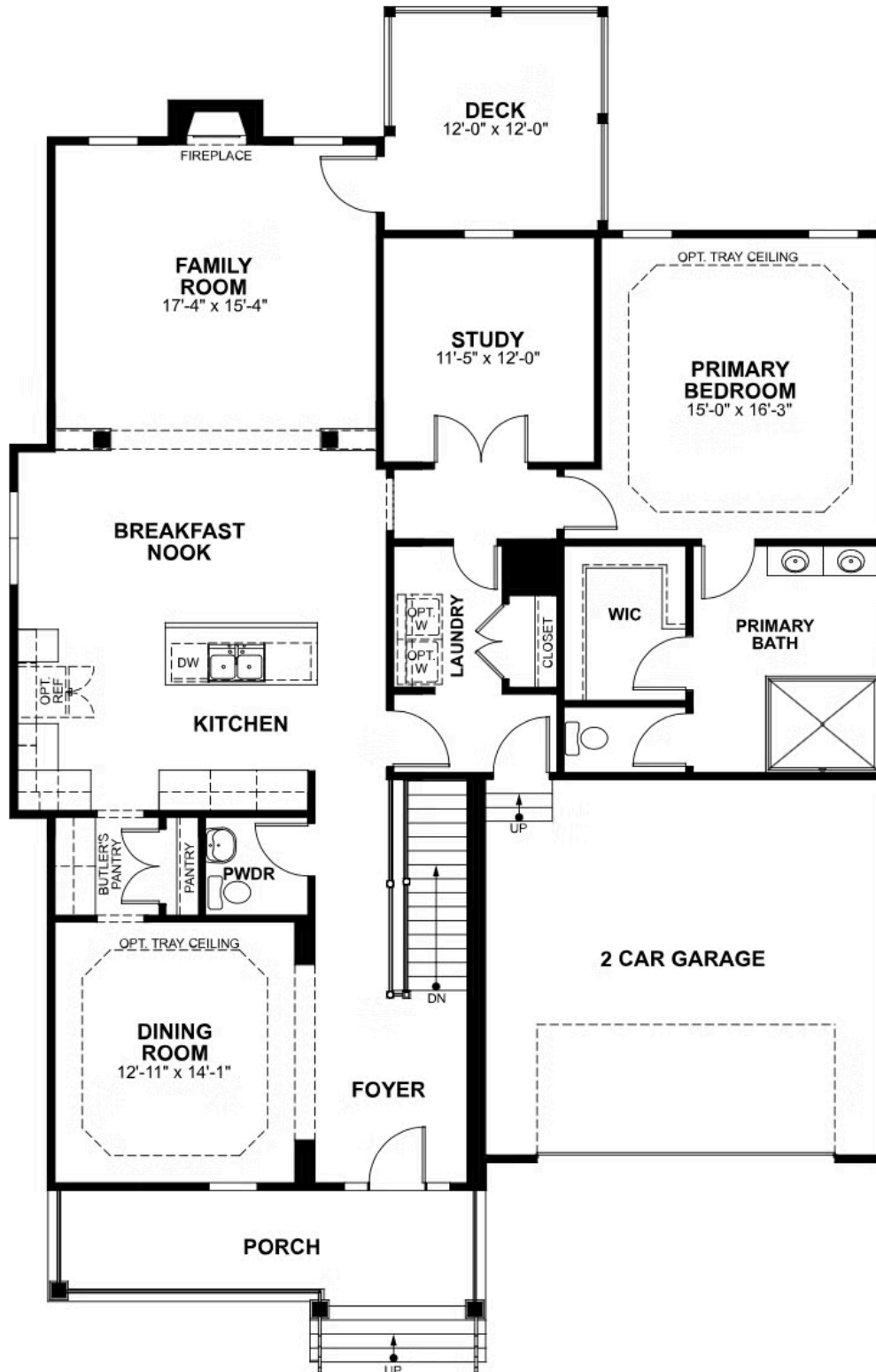
eagleofva.com

7560 Hutton Circle

AT PARKSIDE VILLAGE



MAIN LEVEL



eagleofva.com

TERRACE LEVEL

