





7566 Hutton Circle

AT PARKSIDE VILLAGE



-  3 Bedrooms
-  2.5 Bathrooms
-  3649 Square Feet
-  2 Car Garage

\$799,900



Styled for living large with room to stretch, the Hartford Terrace is a 2-story plan with 3 bedrooms, 2.5 baths, a 2-car garage, and over 3,600 whopping square feet of space. Off of the foyer, this home features a den at the front of the home, and dining room that leads to the kitchen through the butler's pantry. Here, a chef's kitchen promises flavorful adventures and a commanding view of the spacious family room and outside world beyond the breakfast nook and back deck. Feeling sleepy? The main floor primary suite is ready to cradle you in quiet comfort, with a generous pair of walk-in closets and dual-sink bathroom ready for personalization. Head down to the terrace level to enjoy an expanded rec room, two additional bedrooms, and full bath. But wait, there's more—with an expansive unfinished area ready for storage or inspired transformation.

Features of this Home

- Ultimate Primary Bath with Granite Countertops
- Gas Fireplace in Family Room
- Hardwood Stairs with Craftsman Styled Balusters and Newels
- Microwave Drawer, Stainless Steel Hood, GE Gas Convection Range in Kitchen
- Floating Wood Shelves in Laundry Room
- Expanded Rec Room

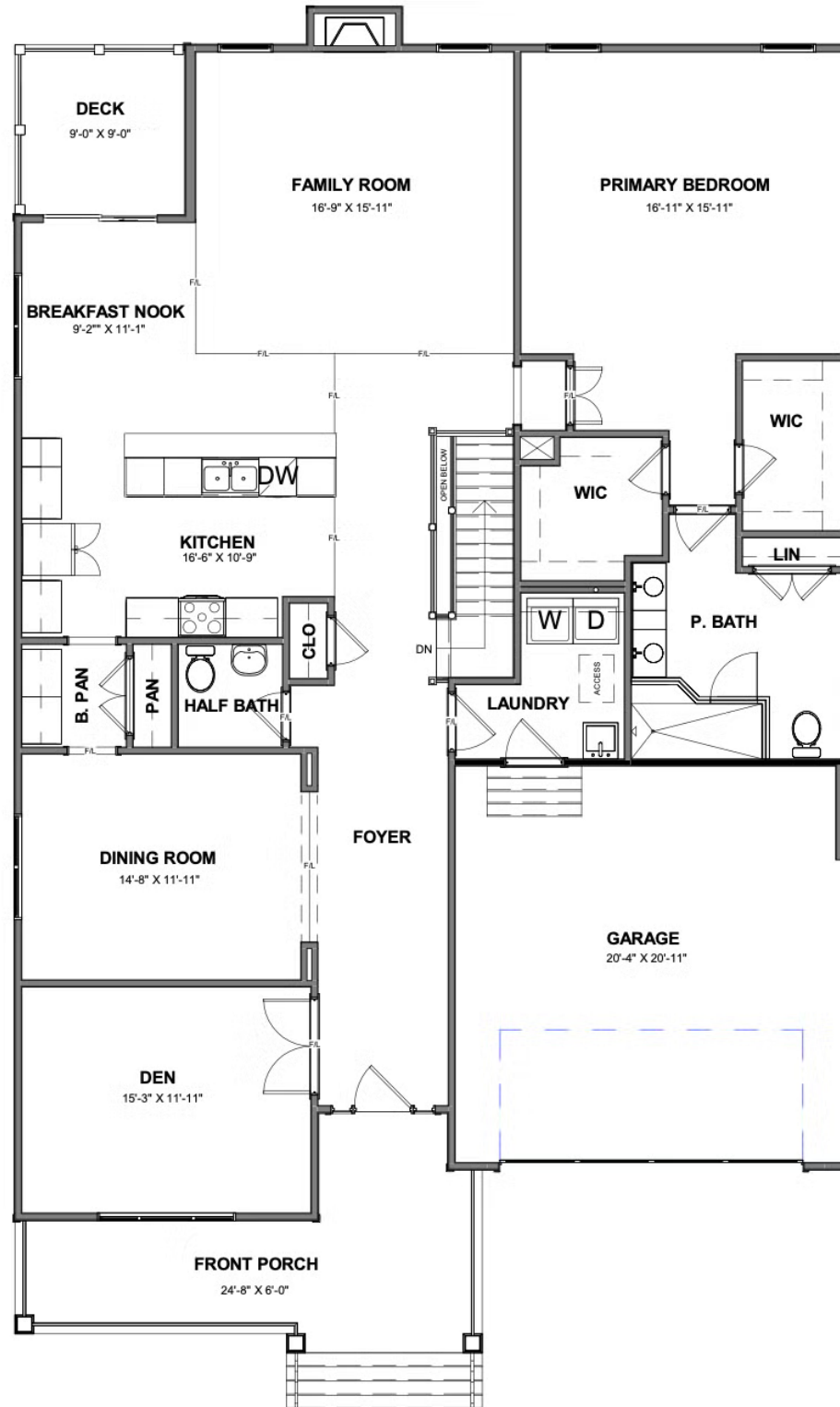
eagleofva.com

7566 Hutton Circle

AT PARKSIDE VILLAGE



MAIN LEVEL



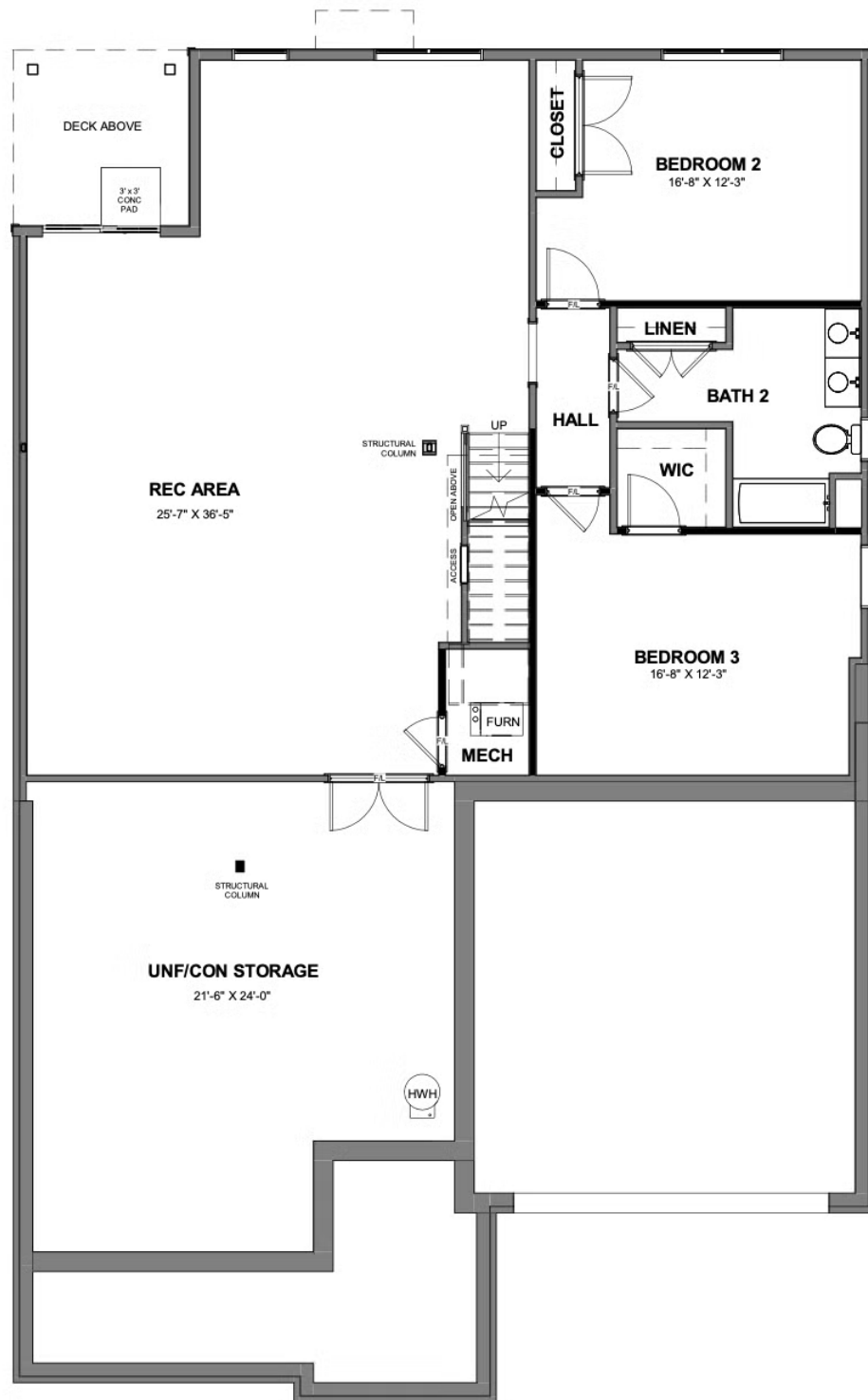
eagleofva.com

7566 Hutton Circle

AT PARKSIDE VILLAGE



TERRACE LEVEL



eagleofva.com