





# 12300 Garnet Parke Circle

AT SWEETSPIRE



-  3 Bedrooms
-  2.5 Bathrooms
-  2677 Square Feet
-  2 Car Garage

**\$899,104**



A modern classic with ageless appeal, the Linden III is a 2-story plan offering 3 bedrooms, 2.5 baths, a 2-car garage, and over 2,600 square feet of spaciousness ready for your personal touch. The aroma and allure of home cooking draws you in to an expansive kitchen and island overlooking the open breakfast nook and family room, complete with a screened porch and a back deck perfect for chilling and grilling. Tucked down the hallway and past the study, the first floor primary suite offers a secluded escape with a dual-sink bathroom oasis and cavernous walk-in closet. At the front of the house, a formal dining room is ready to host guests and gatherings alike, while a central laundry promises good clean living. Upstairs offers an open loft landing, two bedrooms, a full bath, and ample additional storage.

## Features of this Home

- First Floor Primary Bedroom Suite with Serenity Bath
- Formal Dining Room
- Study with French Doors
- Fireplace in Family Room
- Screened Porch
- 2' Bumpout Kitchen and Breakfast Nook
- Hardwood Flooring Throughout 1st Floor
- Hardwood Stairs to 2nd Floor
- Henning 42" Cabinets in Kitchen/Primary Bath with Soft Close Doors/Drawers

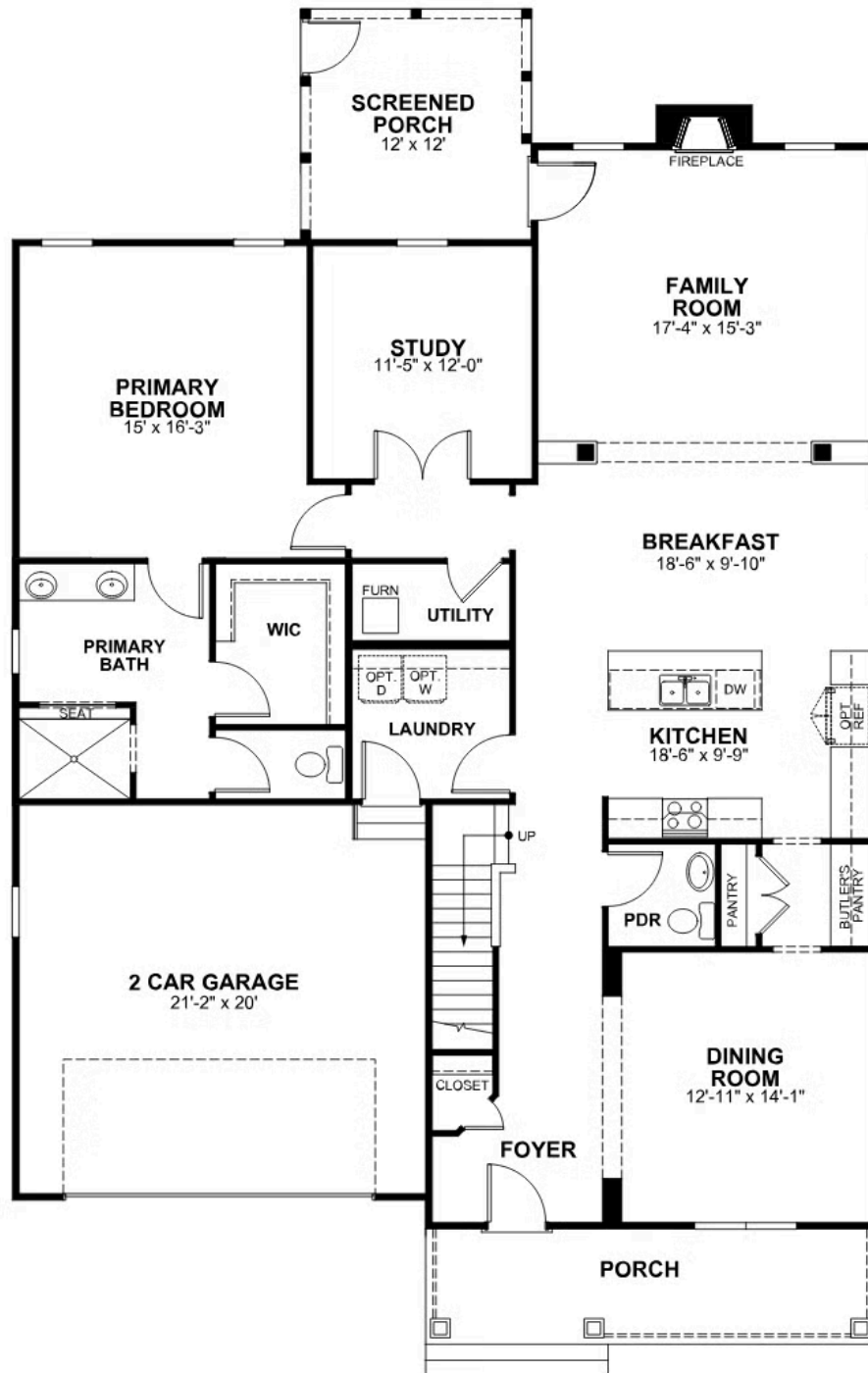
[eagleofva.com](http://eagleofva.com)

# 12300 Garnet Parke Circle

AT SWEETSPIRE



## FIRST FLOOR



[eagleofva.com](http://eagleofva.com)

## SECOND FLOOR

