






THE Fulton Terrace

AT SWEETSPIRE



-  3 Bedrooms
-  3 Bathrooms
-  3,095 Square Feet
-  2 Car Garage
-  2 Levels

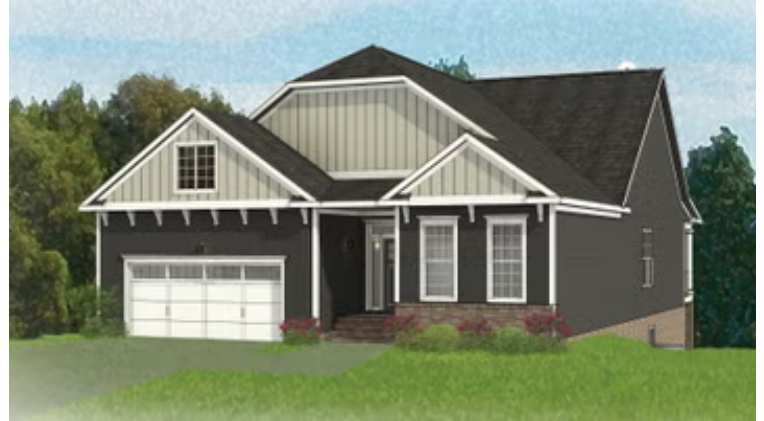


The Fulton Terrace takes living big to epic proportions with a 2-story plan packing 3 bedrooms, 3 full baths, a 2-car garage, and over 3,000 square feet. Through the foyer and past the grand staircase lives your every desire, from lavish dinner parties to quiet game-night gatherings. A gourmet kitchen, family room, and breakfast area with covered patio access merge into an ocean of open space—with an additional den perfect for a home office or formal dining room. A first floor primary suite offers a luxurious dual-sink bath and generous walk-in closet, with an additional bedroom and full bath at the front of the house. And we're just getting started! Head down to the terrace level where a third bedroom, full bath, and a rec area with backyard access awaits—along with two massive storage areas ready for your imagination.

eagleofva.com



Arts & Crafts

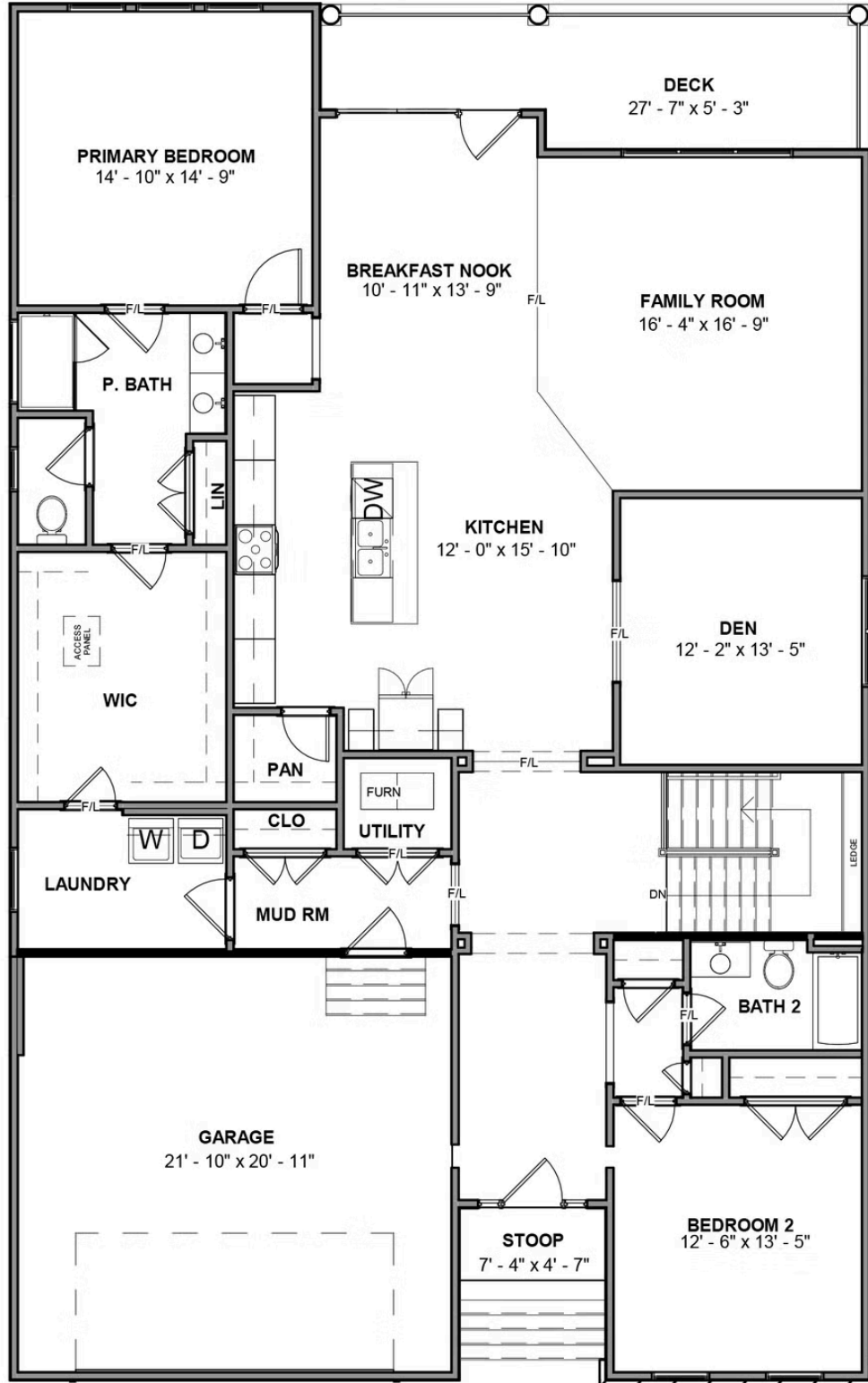


Colonial



Folk Victorian

MAIN LEVEL



TERRACE LEVEL

