





# 12322 Graham Meadows Drive

AT GREENGATE



-  4 Bedrooms
-  4.5 Bathrooms
-  3533 Square Feet
-  2 Car Garage

**\$1,059,900**



The townhome other homes dream of, the Malvern redefines spaciousness with a multi-level flow teeming with exquisite craftsmanship, authentic details, and flair for modern urban-style living. Offering the end unit benefits of additional windows and natural light. A 2-car garage welcomes you to the ground floor foyer with bedroom and full bath. The second level is first class when it comes to relaxing and entertaining, with its masterful flow from dining room to kitchen to family room, and further outward to a large welcoming deck. Move up to the third floor and the comforts of your primary suite with luxurious dual-sink bath and jaw-dropping walk-in closet. A second primary bedroom and full bath, as well as laundry also call this floor home. The fourth floor will quickly become your favorite with its large media room and amazing rooftop terrace, with a fireplace for year-round relaxation. A third bedroom and full bath completes the top floor.

## Features of this Home

- Quartz Countertops with Mitered Edge
- Stacked Cabinets to Ceiling
- Rear Covered Terrace with Fireplace and NanaWall
- Hardwood Flooring in All Bedrooms
- Floor-to-Ceiling Craftsman Moulding in Dining Room

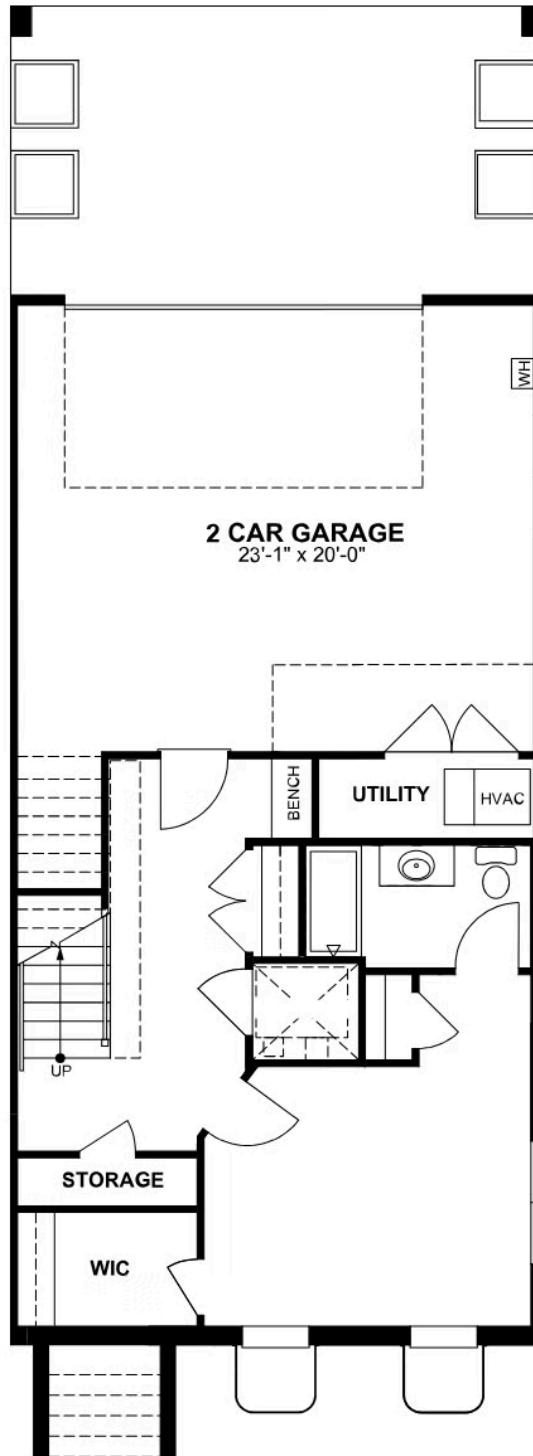
[eagleofva.com](http://eagleofva.com)

# 12322 Graham Meadows Drive

AT GREENGATE

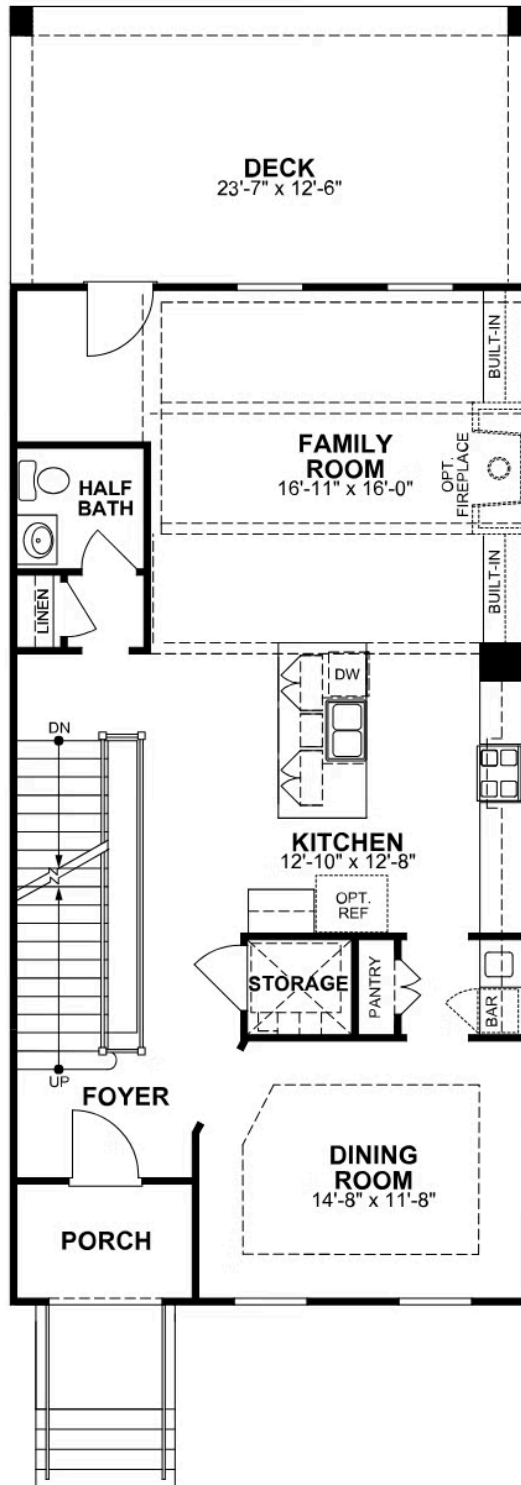


## FIRST FLOOR



[eagleofva.com](http://eagleofva.com)

## SECOND FLOOR

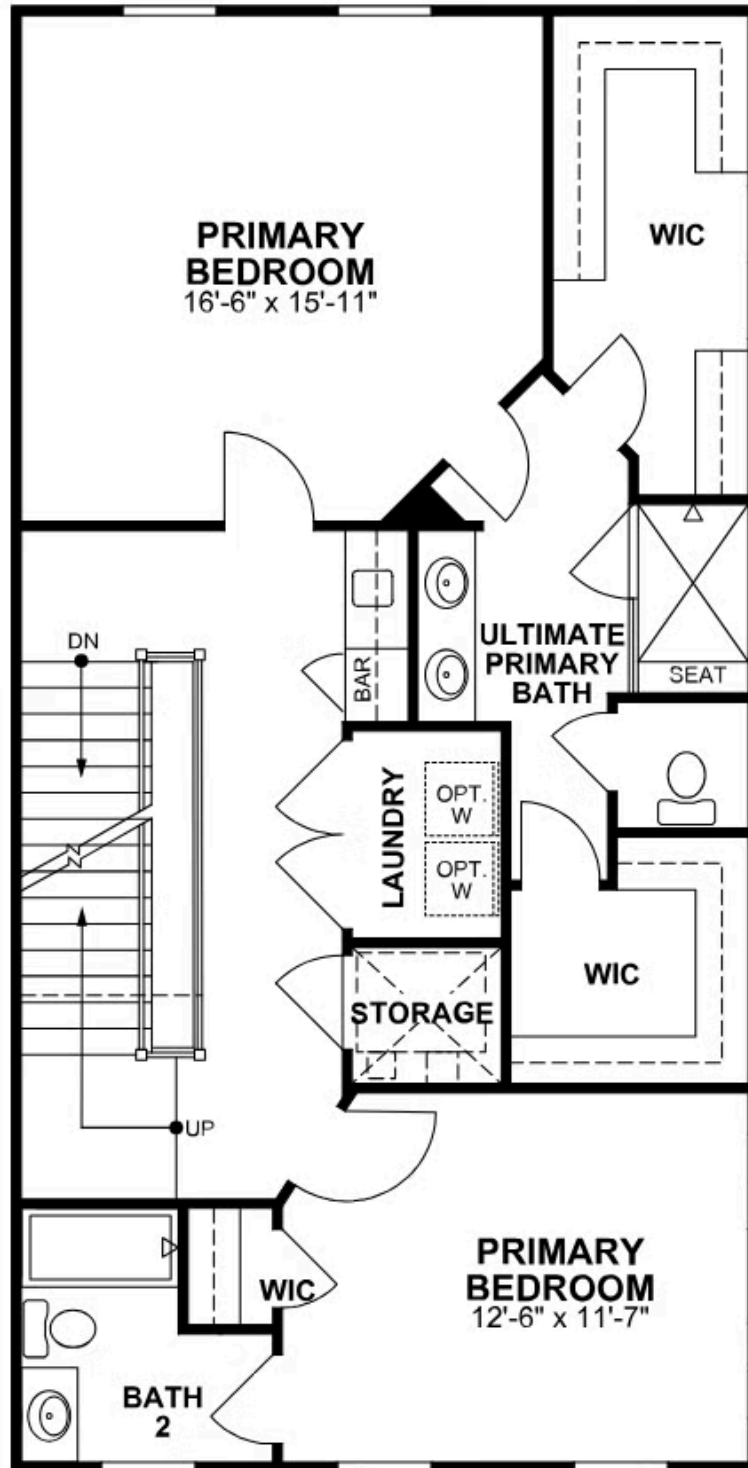


# 12322 Graham Meadows Drive

AT GREENGATE



## THIRD FLOOR



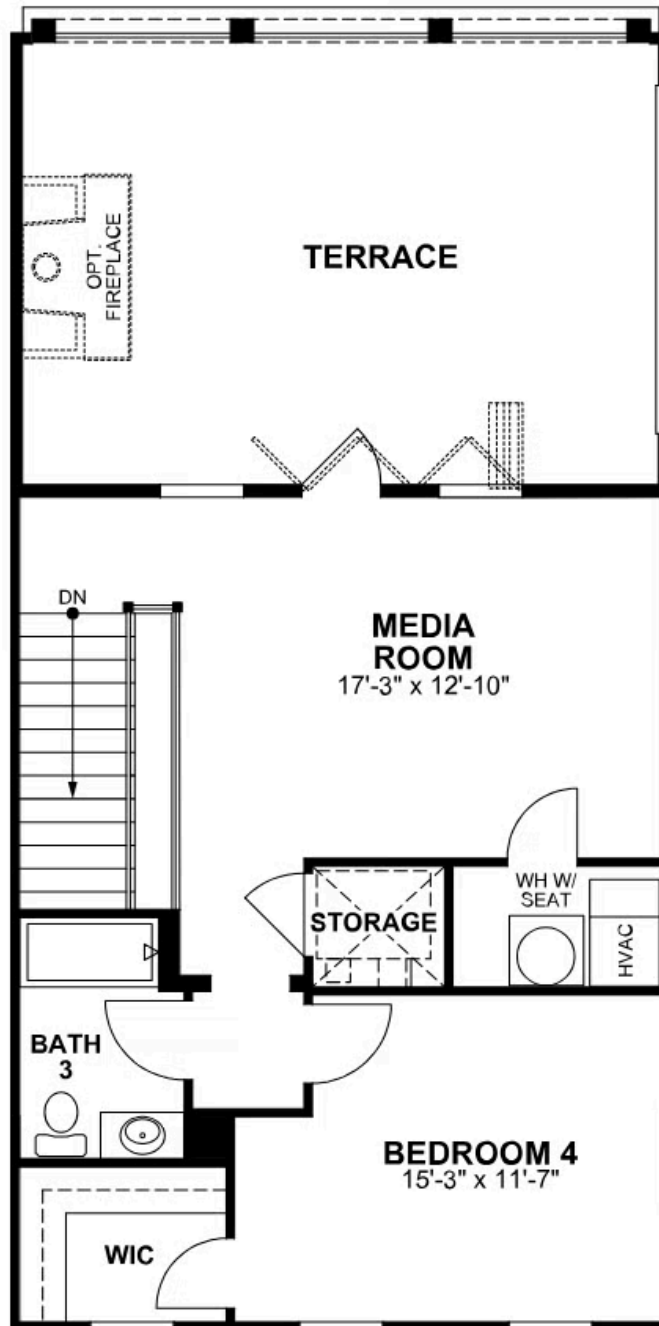
[eagleofva.com](http://eagleofva.com)

# 12322 Graham Meadows Drive

AT GREENGATE



## FOURTH FLOOR



[eagleofva.com](http://eagleofva.com)