






-  3 - 5 Bedrooms
-  3.5 - 4 Bathrooms
-  3,533 Square Feet
-  2 Car Garage
-  4 Levels



The townhome other homes dream of, the Malvern redefines spaciousness with a multi-level flow teeming with exquisite craftsmanship, authentic details, and flair for modern urban-style living. Offering the end unit benefits of additional windows and natural light, the Malvern distinctive curb appeal can be further enhanced with an optional front bay window. A 2-car garage welcomes you to the ground floor foyer with rec room and half bath—aka “the 4th bedroom.” The second level is first class when it comes to relaxing and entertaining, with its masterful flow from dining room to kitchen to family room, and further outward to a large welcoming deck. Move up to the third floor and the comforts of your primary suite with luxurious dual-sink bath and jaw-dropping walk-in closet. A second bedroom and full bath, as well as laundry also call this floor home. The fourth floor will quickly become your favorite with its large media room and amazing rooftop terrace, with an optional fireplace for year-round relaxation. A third bedroom and full bath completes the top floor. Ready for personalization from top to bottom, you can even add an elevator for enhanced convenience—and swank-factor!

Features of this Floorplan

- End unit townhome
- Covered terrace with option to add NanaWall and/or brick fireplace
- Spacious deck
- Multiple third floor bedroom layouts
- Rear load 2-car garage
- Elevator option

THE Malvern

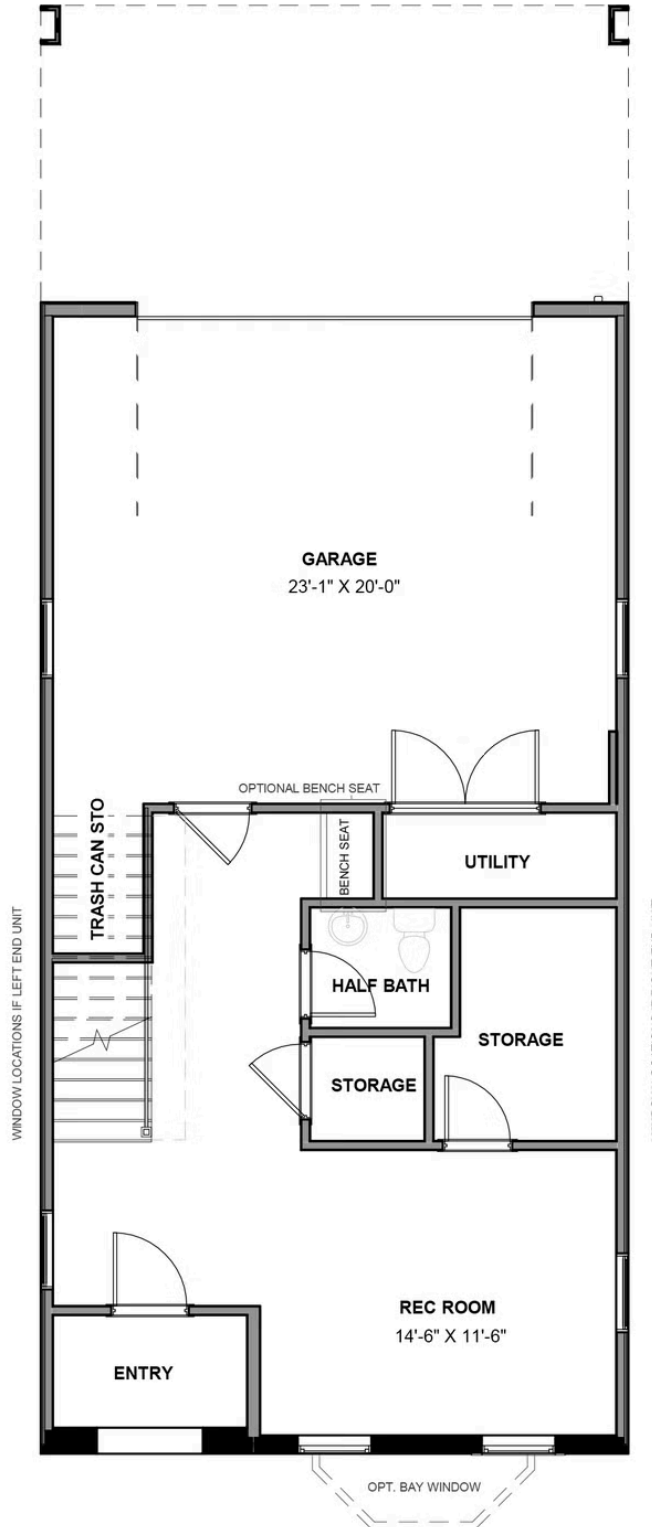
AT GREENGATE



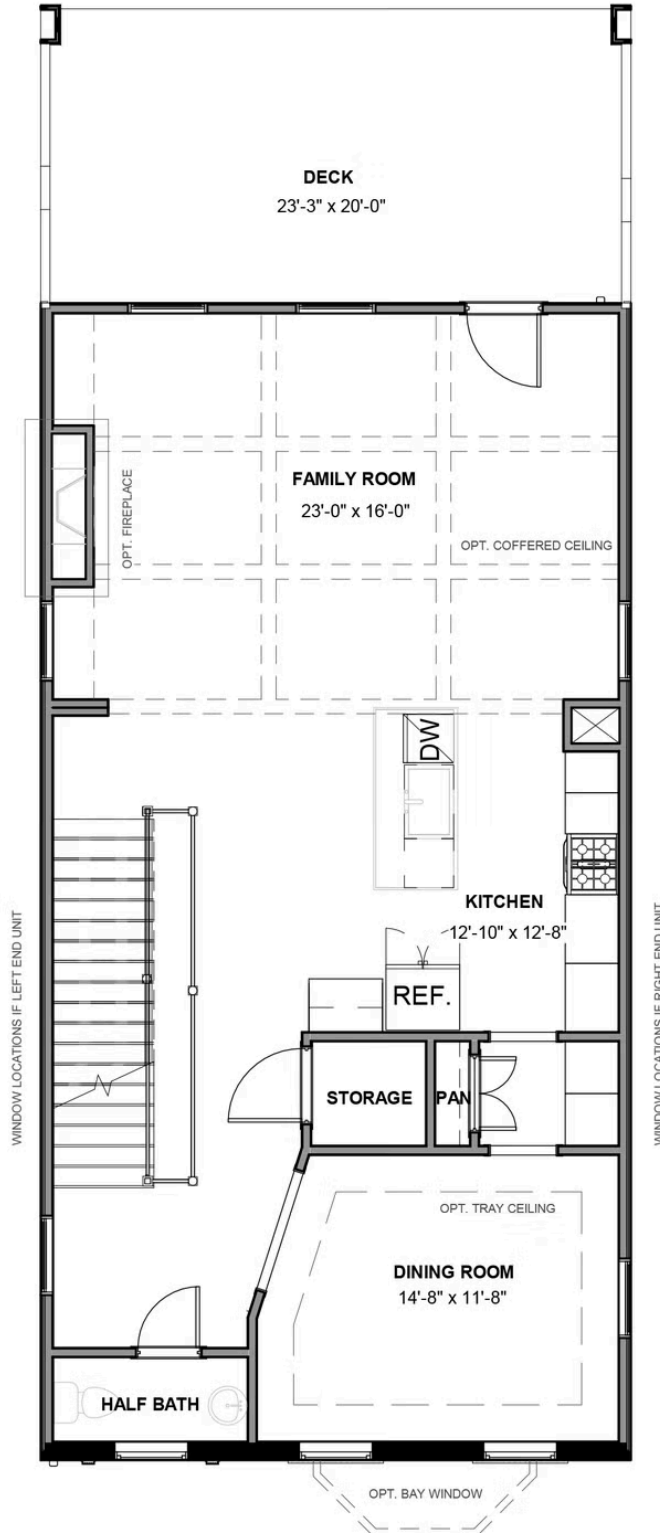
eagleofva.com

This information is deemed reliable but not guaranteed. All details, dimensions, square footage, illustrations and pricing are approximate and may vary from actual plans and specifications. Contact an Eagle Sales Consultant for details. Current information as of 29th January 2025

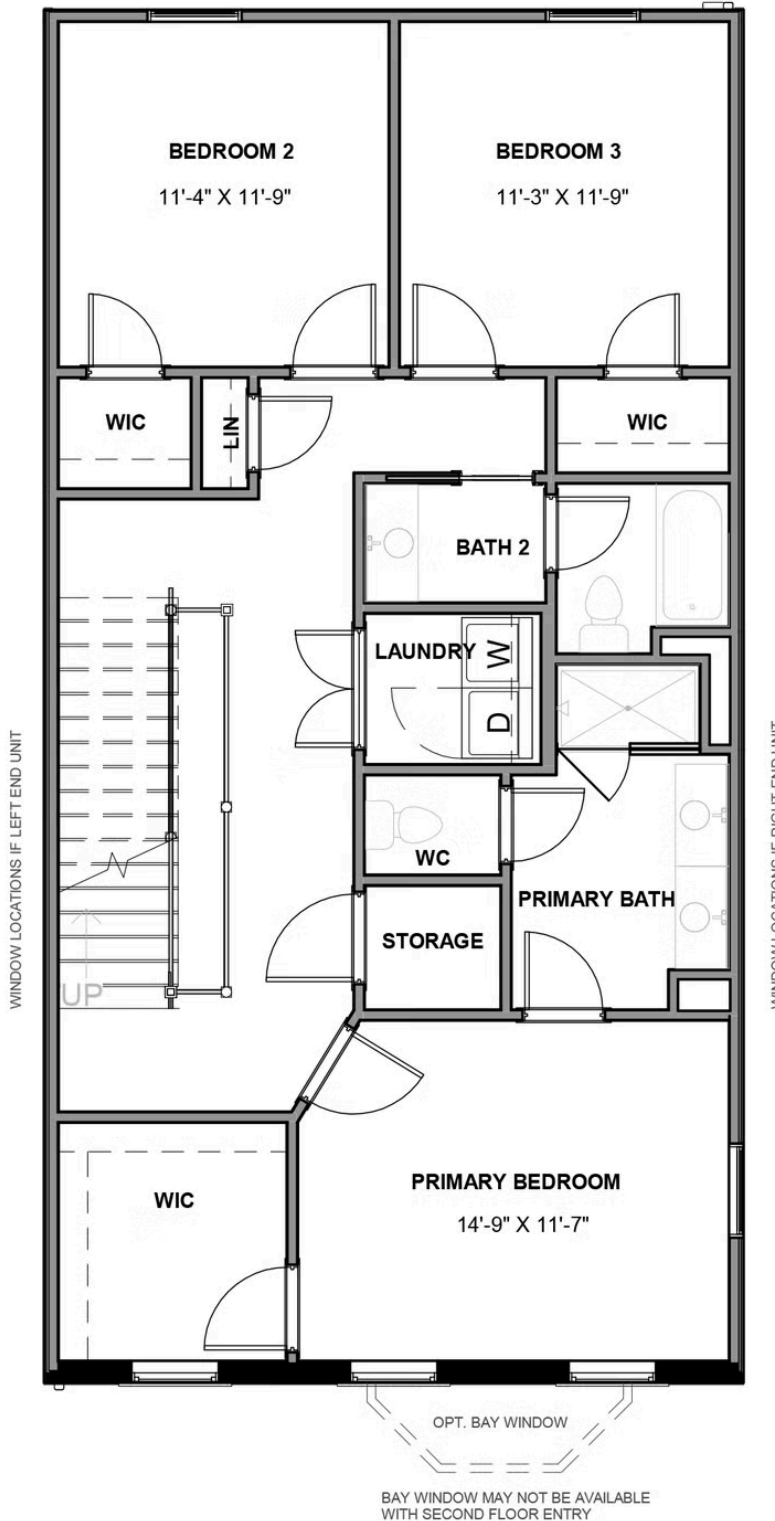
FIRST FLOOR



SECOND FLOOR



THIRD FLOOR



FOURTH FLOOR

