






-  3 - 4 Bedrooms
-  3.5 - 4 Bathrooms
-  3,033 Square Feet
-  2 Car Garage
-  4 Levels



Level-up your luxury in the Park, a spacious 4-story townhome that blends exquisite craftsmanship and exacting detail with a flair for modern urban living. Parking is never a problem with a private 2-car garage that welcomes you home to a ground foyer with rec room and half bath—aka “the 4th bedroom.” The second level is first class when it comes to relaxing and entertaining, with its masterful flow from dining room to kitchen to family room, and further outward to a large welcoming deck. Move up to the third floor and the comforts of your primary suite with its dual-sink bath and generous walk-in closet. A second bedroom and full bath, as well as laundry also call this floor home. And there's more to go! Step up to the fourth floor and into a large media room offering access to an amazing terrace with optional fireplace. A third bedroom and full bath completes the top floor. Ready for personalization from top to bottom, you can even add an elevator for enhanced convenience—and wow-factor!

### Features of this Floorplan

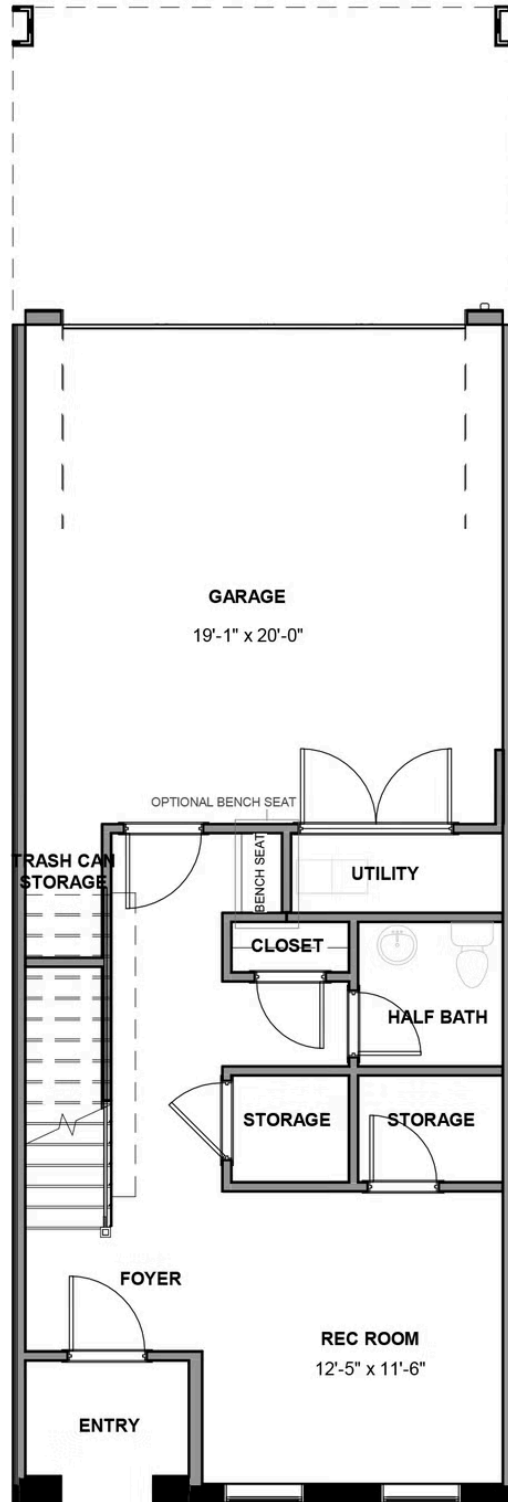
- Covered terrace with option to add brick fireplace
- Multiple third floor bedroom layouts
- Spacious deck
- Rear load 2-car garage
- Option for elevator







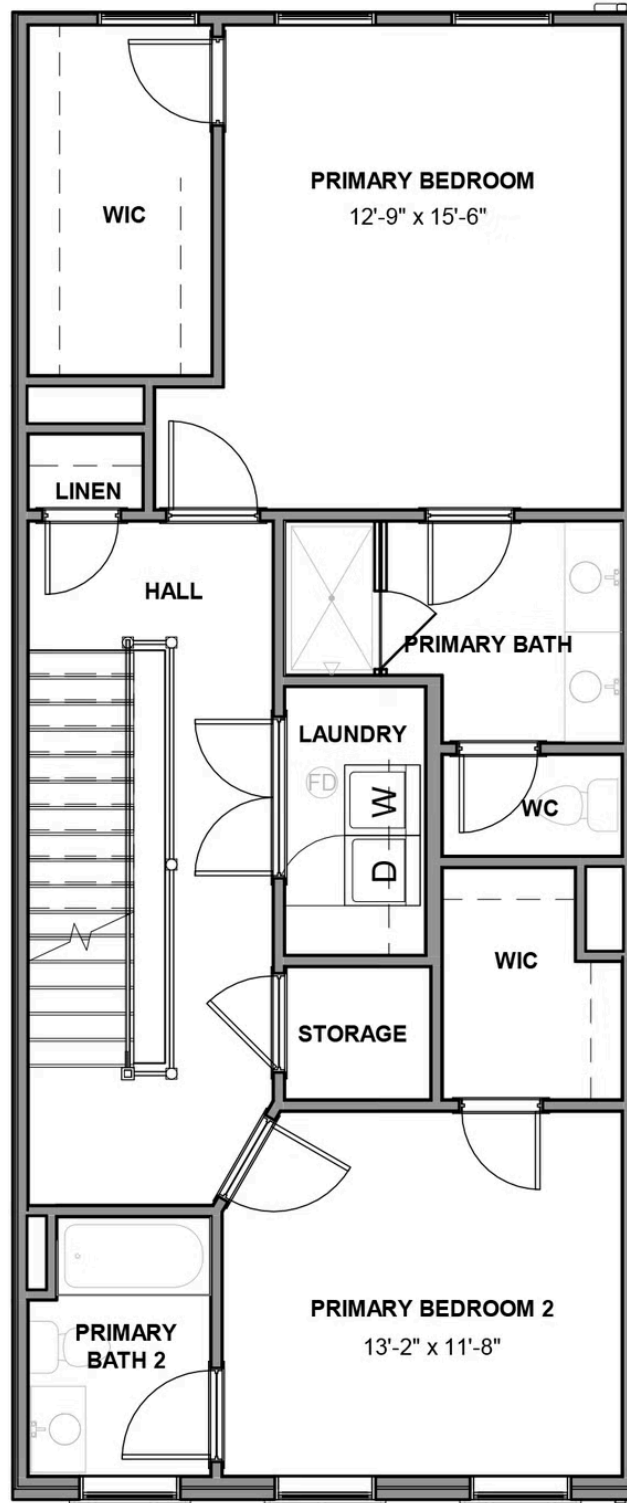
FIRST FLOOR



SECOND FLOOR



THIRD FLOOR



FOURTH FLOOR

