





# 7712 New Settlement Court

AT SETTLER'S RIDGE



-  2 Bedrooms
-  2.5 Bathrooms
-  1459 Square Feet
-  2 Car Garage

**\$433,808**



**Brand new floor plan!** Introducing the Pearl Ranch: a one level plan that is anything but ordinary. Enter the home from your 2-car garage and step into your mudroom/laundry room. Just steps away is your spacious kitchen with large island, walk-in corner pantry, and plenty of cabinet space. The island overlooks both the breakfast nook and the family room, ideal for staying connected. Off the breakfast nook you'll find a patio where you can enjoy your morning coffee or wind down in the evening. The primary bedroom is tucked away at the rear of the home, boasting a walk-in closet and large primary bath with separate water closet and dual sink vanity. At the front of the home you will find an additional bedroom with full bath and walk-in closet.

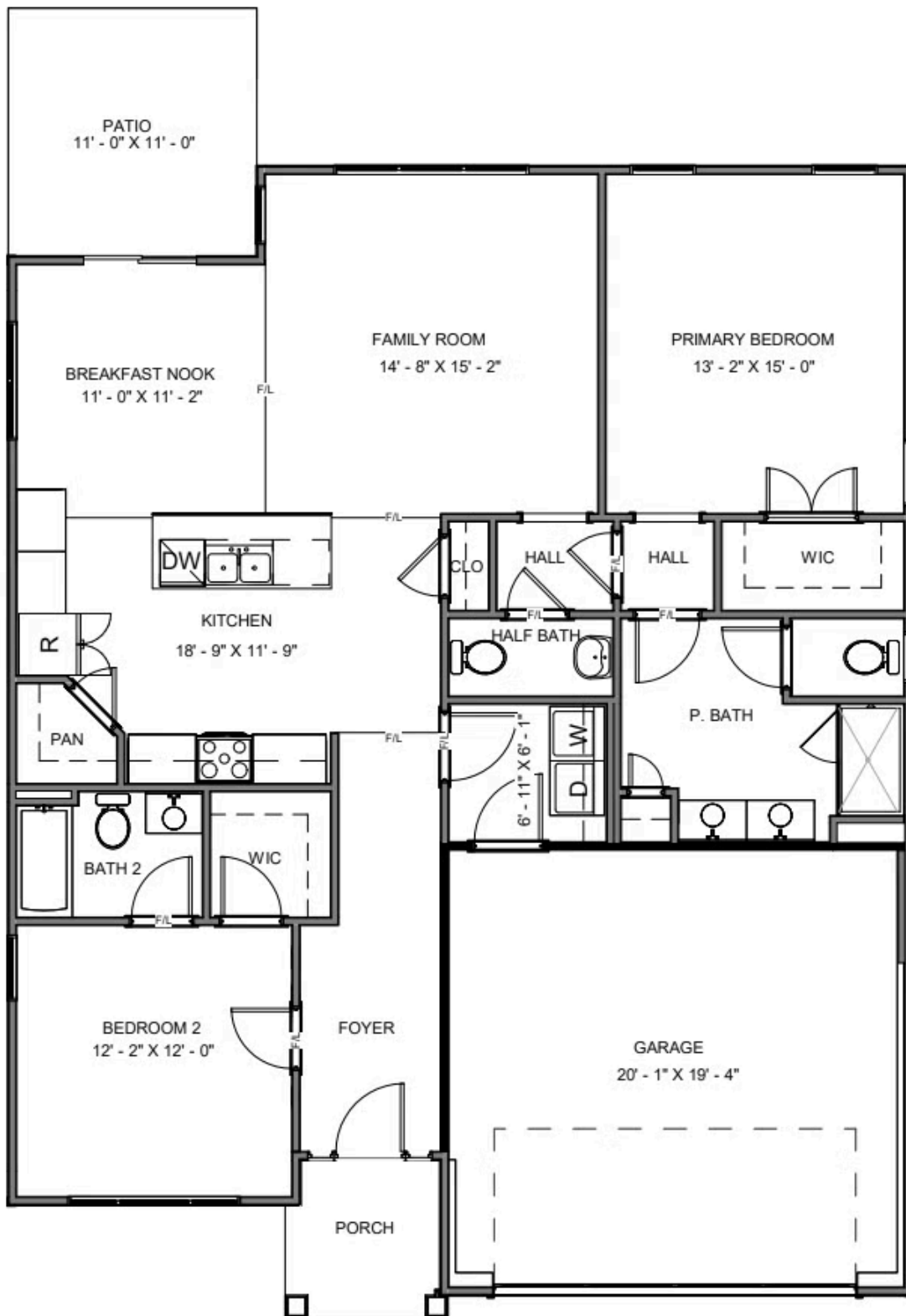
## Features of this Home

- Outdoor patio
- Luxury quartz countertops in kitchen
- Large kitchen island
- Open family and living space
- Laminate flooring
- Gas range
- Backs up to pond
- Nice backyard
- Located in cul-de-sac

[eagleofva.com](http://eagleofva.com)

# 7712 New Settlement Court

AT SETTLER'S RIDGE



[eagleofva.com](http://eagleofva.com)