




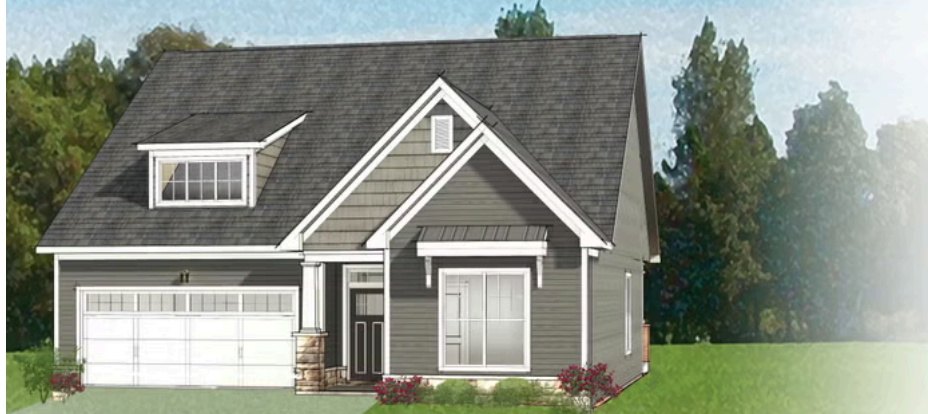


# THE Azalea

AT SETTLER'S RIDGE



-  3 Bedrooms
-  3 Bathrooms
-  2,006 Square Feet
-  2 Car Garage
-  2 Levels



Meet the Azalea, a brand new floor plan featuring over 2,000 sf of living space with 3 bedrooms, 3 baths, and a 2-car garage with additional storage area. Step through the foyer into your kitchen complete with walk-in corner pantry. The kitchen flows seamlessly to the dining room and right on through to the family room. Looking to enjoy your morning coffee or sip on your afternoon sweet tea? Head no farther than your lanai situated right off the family room! The primary bedroom is located on the first floor with spacious walk-in closet and attached primary bath. A second main level bedroom and full bath can be found just off the foyer. The second floor is perfect for guests or additional entertainment space with a large loft, additional bedroom, and full bath.

[eagleofva.com](http://eagleofva.com)





**Colonial**



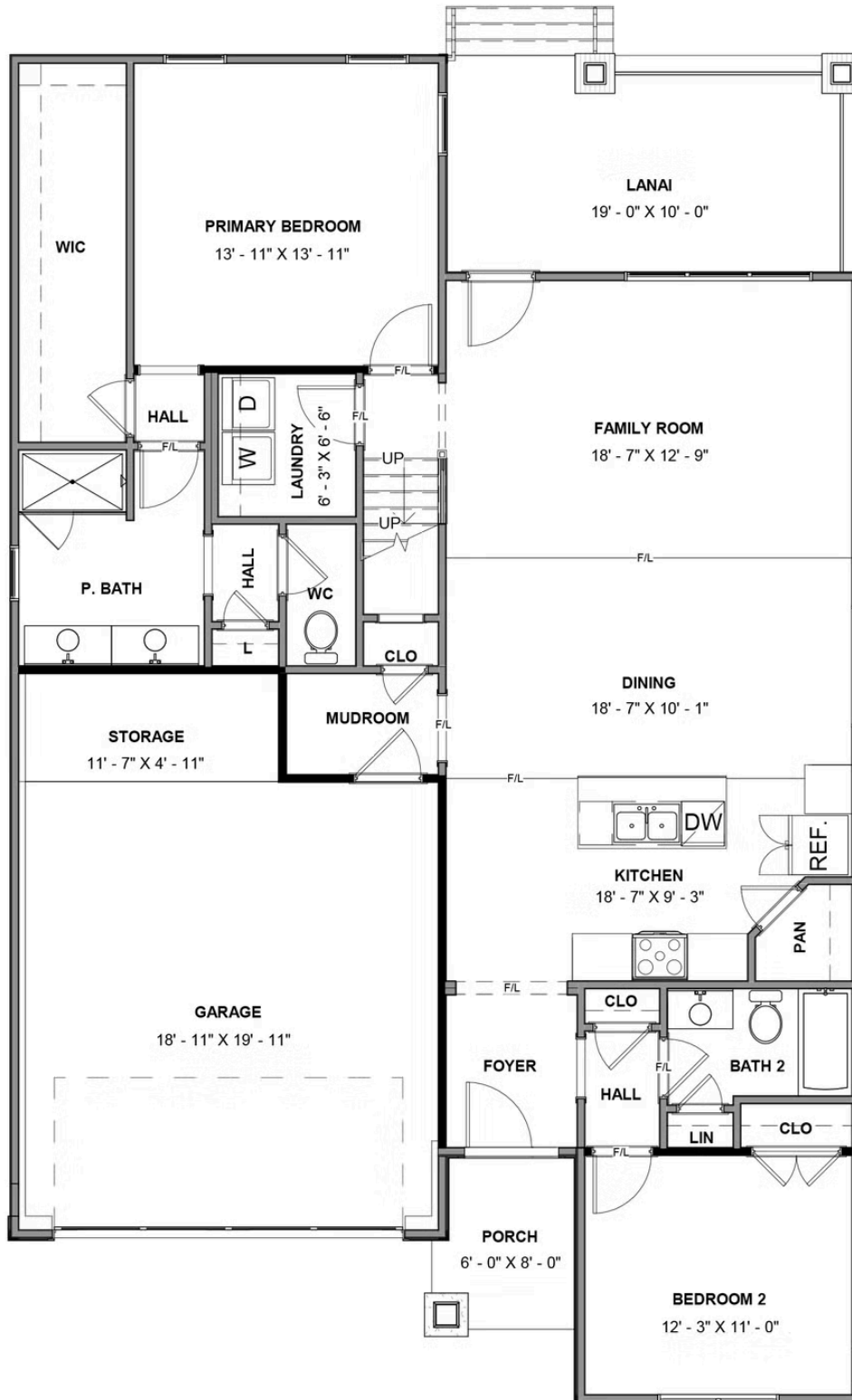
**Arts & Crafts**



**Craftsman**



FIRST FLOOR



SECOND FLOOR

