





12437 North Crossing Drive

AT READERS BRANCH SINGLE FAMILY HOMES



-  3 Bedrooms
-  3.5 Bathrooms
-  2540 Square Feet
-  2 Car Garage

\$749,900



The Belmont Terrace is a 2 story new home floor plan with 3 bedrooms, 3.5 bathrooms, and a 2-car garage. This unique plan allows you to enter on the main floor which features an open-flowing dining room and living room perfect for entertaining. This large space flows directly into the alternate kitchen layout with island overlooking the family room with fireplace, and a screened porch has been added on for a great place to unwind. The primary bedroom suite is also on this level with a large walk-in closet and Serenity primary bath. A second bedroom and full bath gives you great space for guests. Head down the stairs to the terrace level where there are huge unfinished storage spaces and a large media room for relaxation.

Features of this Home

- Alternate kitchen
- Media room and additional bedroom on terrace level
- Serenity primary bath with bench seat in shower
- Hardwood stairs
- Fireplace in family room
- Gas plumbing
- HDMI video package
- 12x12 screen porch in lieu of deck

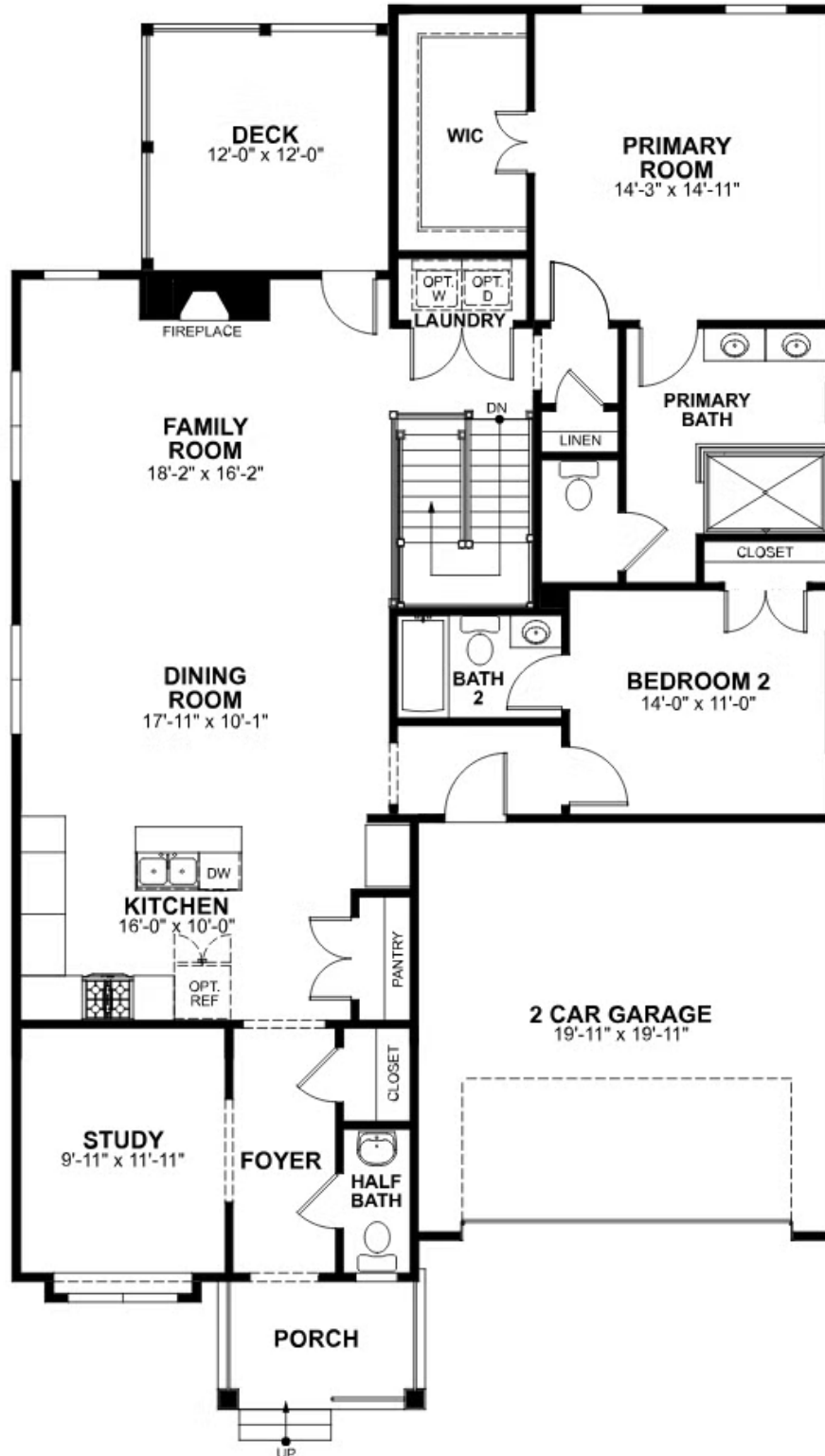
eagleofva.com

12437 North Crossing Drive

AT READERS BRANCH SINGLE FAMILY HOMES



MAIN LEVEL



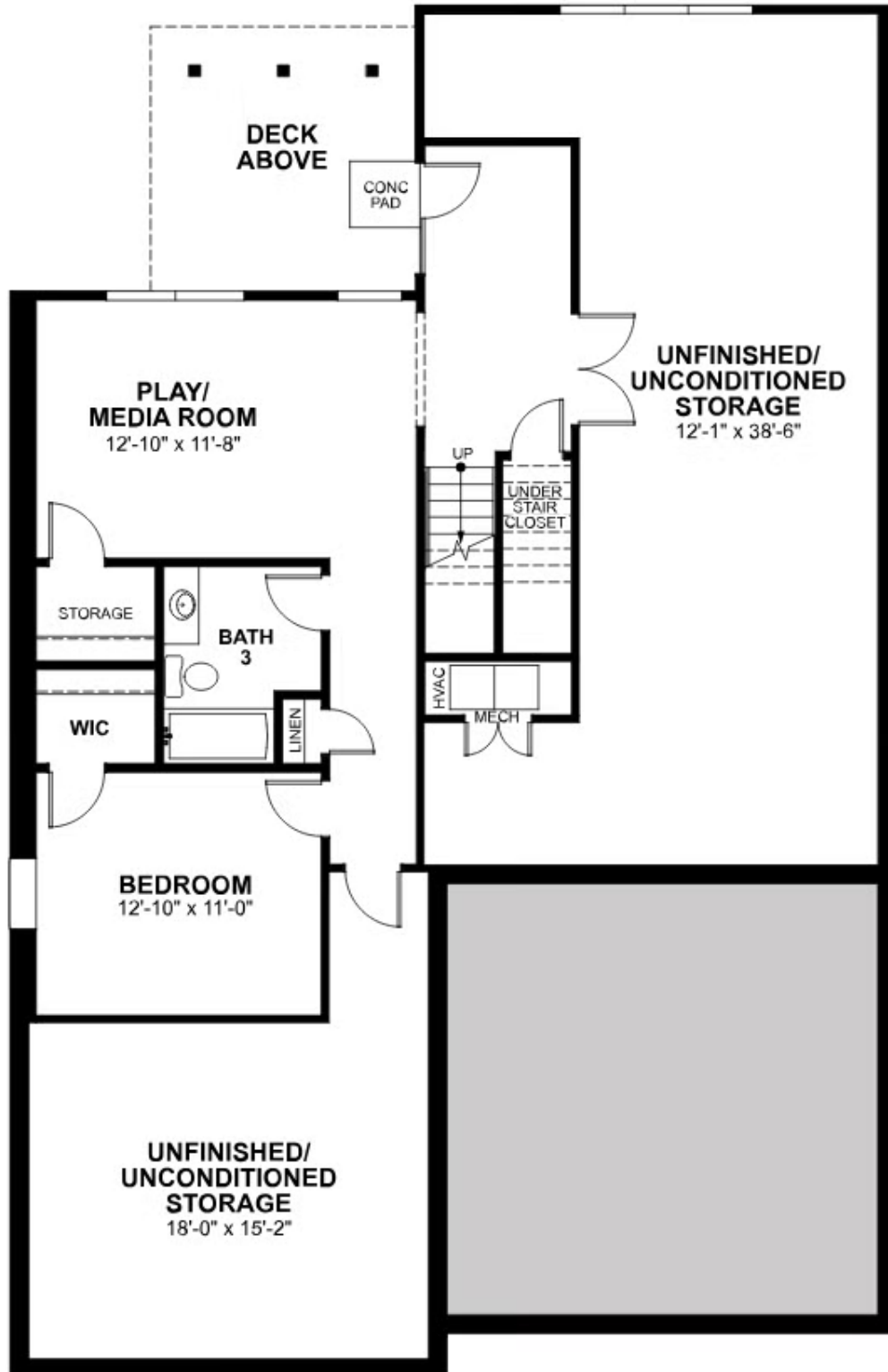
eagleofva.com

12437 North Crossing Drive

AT READERS BRANCH SINGLE FAMILY HOMES



TERRACE LEVEL



eagleofva.com