





# 12471 North Crossing Drive

AT READERS BRANCH SINGLE FAMILY HOMES



-  3 Bedrooms
-  2.5 Bathrooms
-  3380 Square Feet
-  2 Car Garage

**\$867,110**



Think you've seen it all? Then you haven't seen Linden Terrace, a 2-story plan with 3 bedrooms, 2.5 baths, a 2-car garage, and 2,700 glorious square feet of pure home happiness. A front porch made for sipping lemonade and social graces welcomes you inside to a chef's dream kitchen offering a scenic vista overlooking both breakfast nook and family room. A formal dining room and home study lend sophistication and flexibility, while a secluded first floor primary suite with prodigious walk-in closet and dual-sink bath offer a quiet escape. Step downstairs to the terrace level where a rec room, full bath, and two additional bedrooms blend playfulness, with easygoing comfort and everyday livability—while a cavernous unfinished storage area is ready for whatever you can imagine.

## Features of this Home

- Serenity Primary Bath with Bench Seat
- Screened Porch
- Gas Fireplace in Family Room
- Expanded Rec Room
- Hardwood Stairs
- Laundry Sink Rough-In
- Gas Plumbing

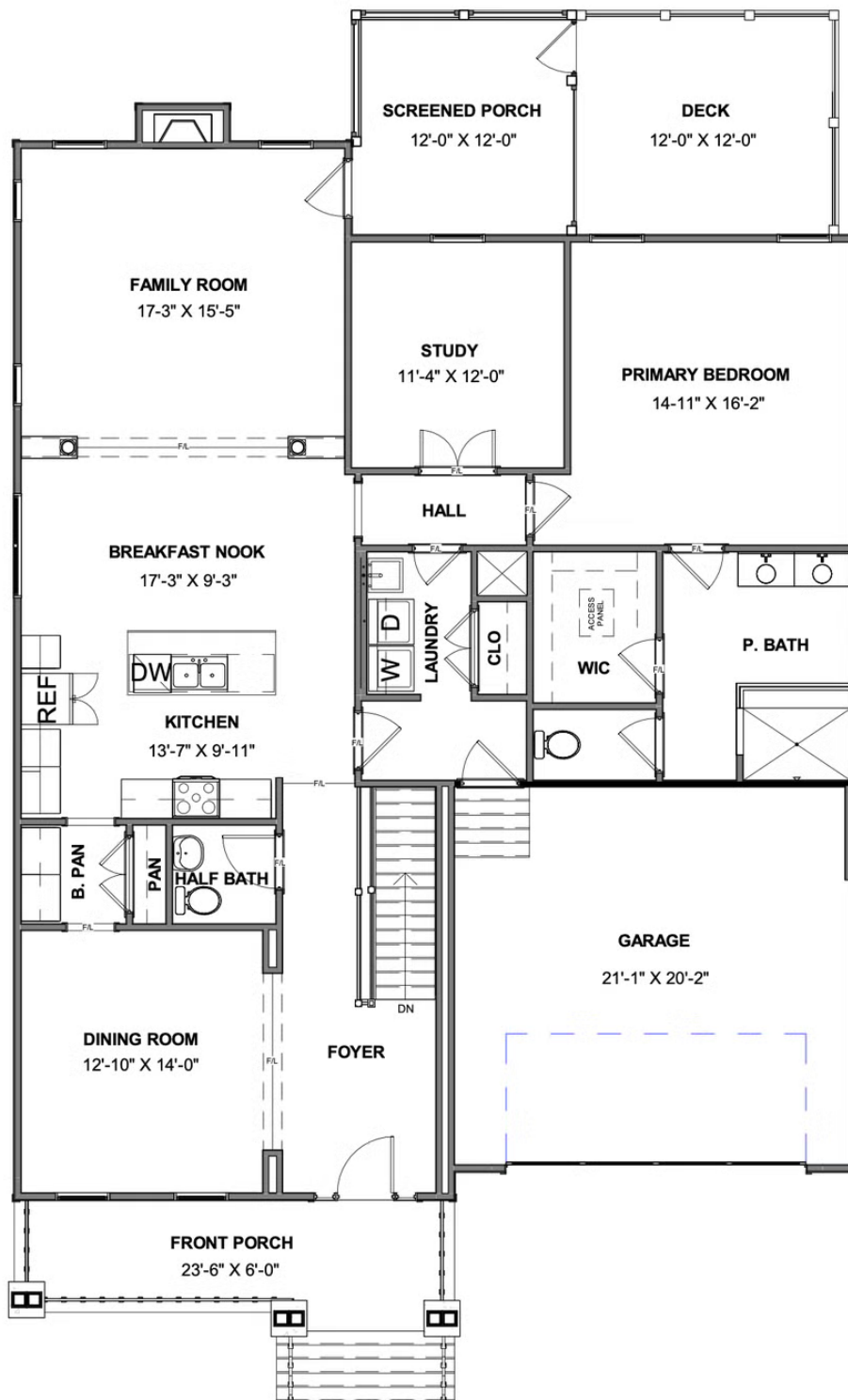
[eagleofva.com](http://eagleofva.com)

# 12471 North Crossing Drive

AT READERS BRANCH SINGLE FAMILY HOMES



## MAIN LEVEL



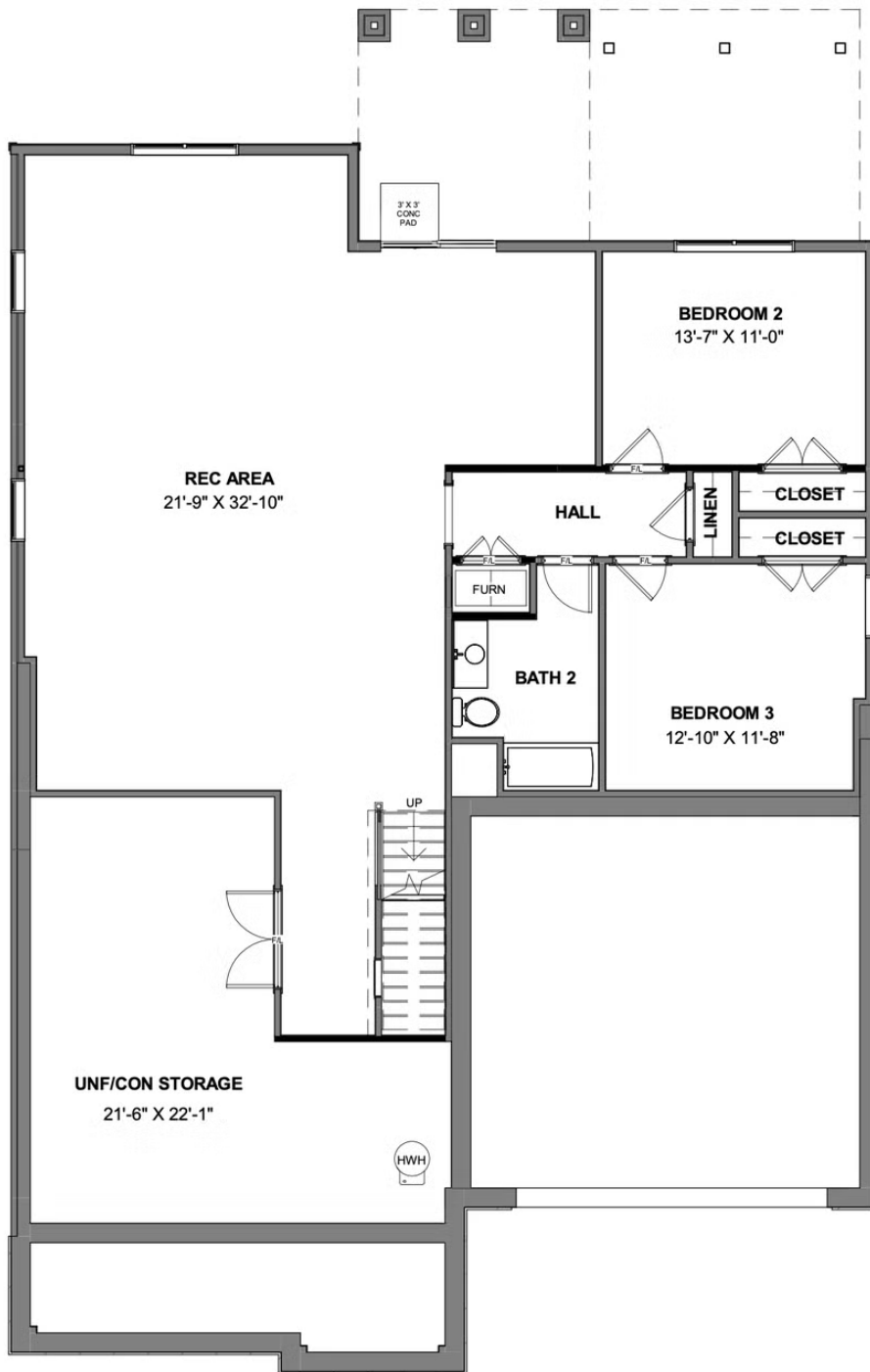
[eagleofva.com](http://eagleofva.com)

# 12471 North Crossing Drive

AT READERS BRANCH SINGLE FAMILY HOMES



## TERRACE LEVEL



[eagleofva.com](http://eagleofva.com)