





12543 North Readers Lane eagle

AT READERS BRANCH SINGLE FAMILY HOMES

-  4 Bedrooms
-  4.5 Bathrooms
-  3031 Square Feet
-  2 Car Garage

\$914,990



MOVE-IN READY! A modern classic with ageless appeal, this custom Linden III is a 2-story plan offering 4 bedrooms, 4.5 baths, a 2-car garage, and over 3,000 square feet of spaciousness ready for your personal touch. The aroma and allure of home cooking draws you in to an expansive kitchen and island overlooking the open breakfast nook and family room, complete with a florida room and back deck perfect for chilling and grilling. Tucked down the hallway and past the study, the first floor primary suite offers a secluded escape with a dual-sink bathroom oasis and cavernous walk-in closet. At the front of the house is a convenient bedroom and full bath, while a central laundry promises good clean living. Upstairs offers an open loft landing, two bedrooms, two full baths, and ample additional storage.

Features of this Home

- Florida Room
- Serenity Primary Bath
- Composite Deck
- Upgraded Kitchen Features
- Hardwood Stairs

eagleofva.com

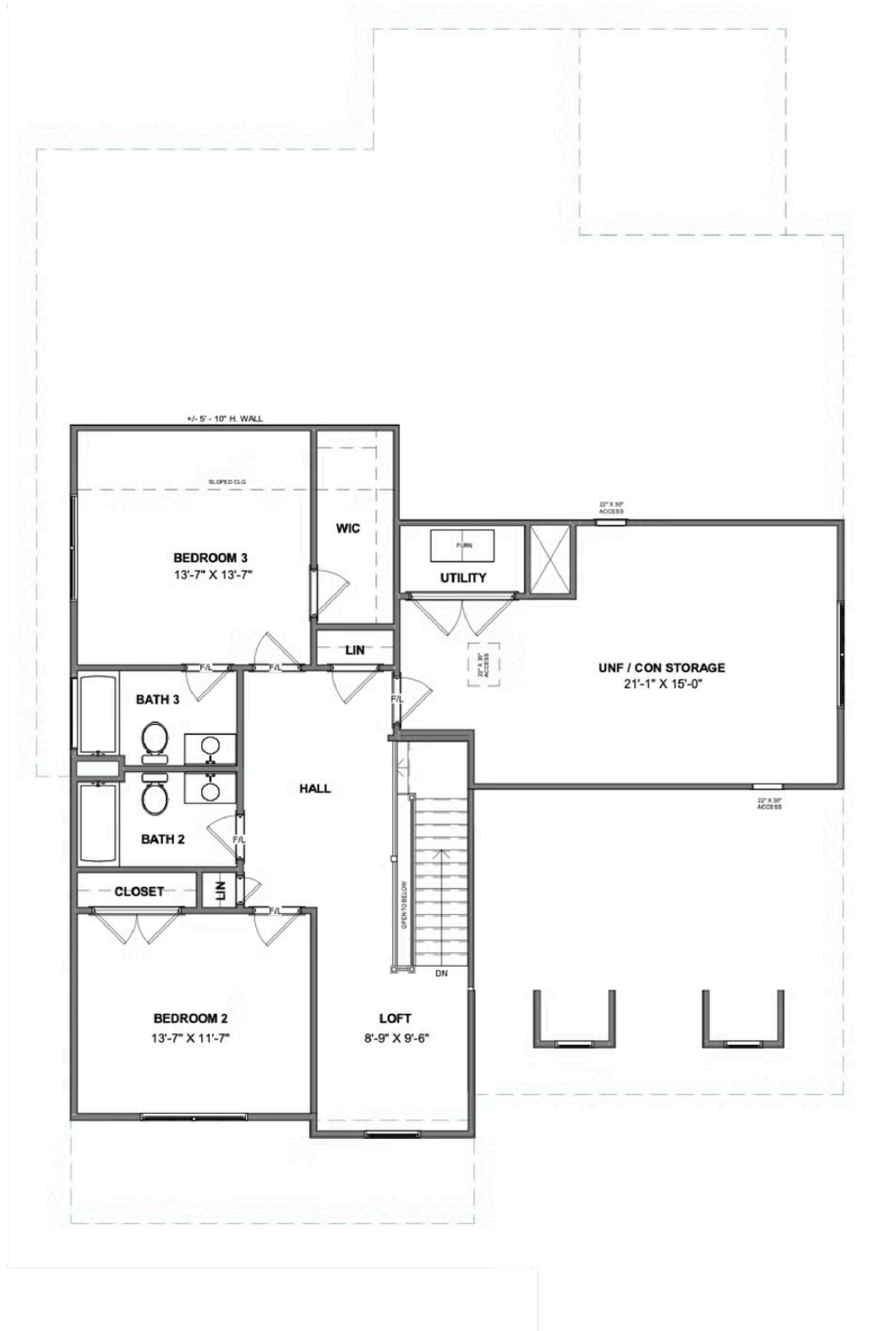
This is a detailed floor plan of a house. The layout includes the following rooms and features:

- Florida Room:** 11'-3" X 11'-7"
- Deck:** 12'-0" X 12'-0"
- Family Room:** 19'-3" X 15'-4"
- Study:** 11'-3" X 12'-0"
- Primary Bedroom:** 15'-0" X 13'-11"
- Breakfast Nook:** 17'-9" X 9'-4"
- Kitchen:** 15'-7" X 10'-0"
- Entry:** Features a closet (CLO) and a half bath (HALF BATH).
- Hall:** Central hallway connecting the main living areas.
- Garage:** 21'-1" X 20'-2"
- Bedroom 4:** 13'-7" X 11'-7"
- Bath 4:** Includes a built-in vanity (BUILT-IN) and a tankless hot water heater (TANKLESS HWH).
- Pan:** A small utility or storage area.
- Front Porch:** 23'-6" X 6'-0"
- Other Features:** The plan includes a soffit (18" D. SOFFIT), a window (DW), a refrigerator (REF), a closet (CLO), a linen closet (LINEN), a staircase (UP), and a door (DOOR) leading to the garage.

12543 North Readers Lane eagle

AT READERS BRANCH SINGLE FAMILY HOMES

SECOND FLOOR



eagleofva.com