





# 12640 Branch Parke Drive

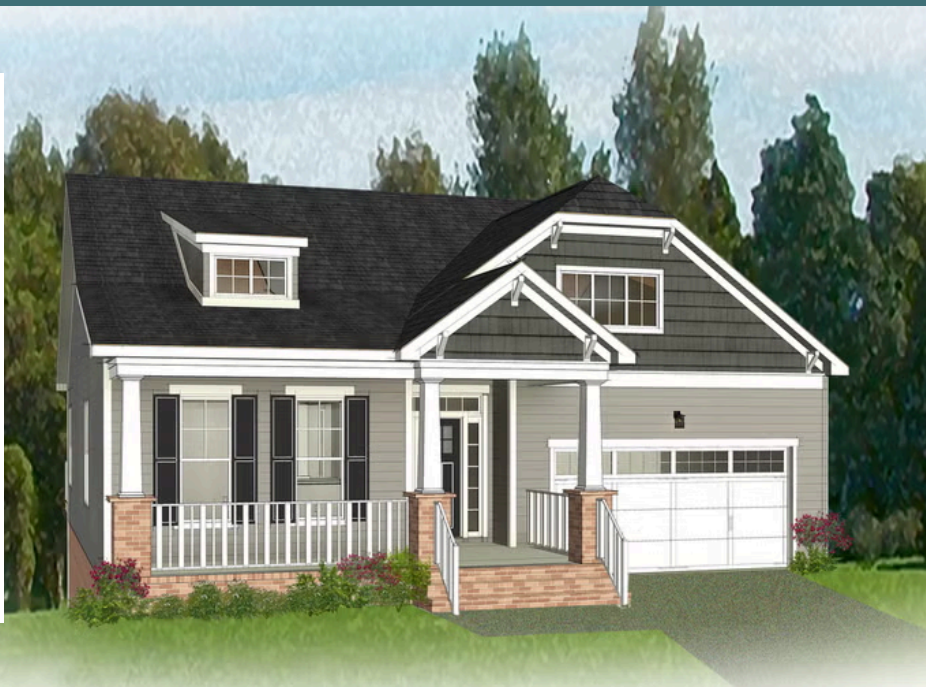
AT READERS BRANCH SINGLE FAMILY HOMES



# eagle

-  3 Bedrooms
-  2.5 Bathrooms
-  3640 Square Feet
-  2 Car Garage

## \$878,526



Styled for living large with room to stretch, the Hartford Terrace is a 2-story plan with 3 bedrooms, 2.5 baths, a 2-car garage, and over 3,600 whopping square feet of space. And open living room and dining room greet you off the foyer and invite you into the flowing heart of the home. Here, a chef's kitchen promises flavorful adventures and a commanding view of the spacious family room and outside world beyond the breakfast nook and back deck.

Feeling sleepy? The main floor primary suite is ready to cradle you in quiet comfort, with a generous pair of walk-in closets and dual-sink bathroom ready for personalization. Head down to the terrace level to enjoy an expanded rec room, two additional bedrooms, and full bath.

But wait, there's more—with an expansive unfinished area ready for storage or inspired transformation.

## Features of this Home

- Hardwood Stairs
- Granite Countertops in Kitchen
- Expanded Rec Room in Basement
- Gas Fireplace in Family Room
- Ultimate Primary Bathroom

[eagleofva.com](http://eagleofva.com)

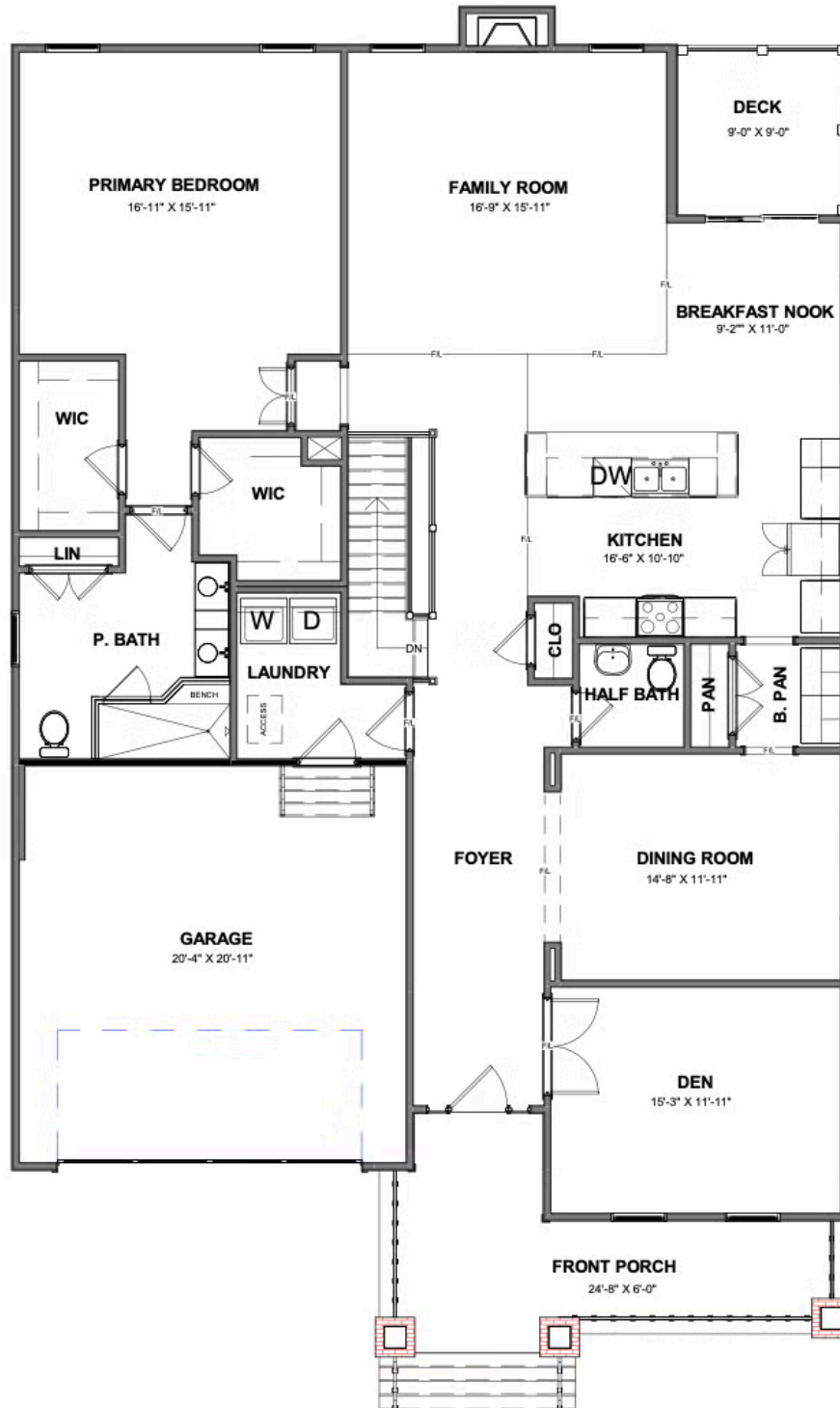
# 12640 Branch Parke Drive

AT READERS BRANCH SINGLE FAMILY HOMES



# eagle

## MAIN LEVEL



[eagleofva.com](http://eagleofva.com)

# 12640 Branch Parke Drive

AT READERS BRANCH SINGLE FAMILY HOMES



# eagle

## TERRACE LEVEL



[eagleofva.com](http://eagleofva.com)