





# 12644 Branch Parke Drive

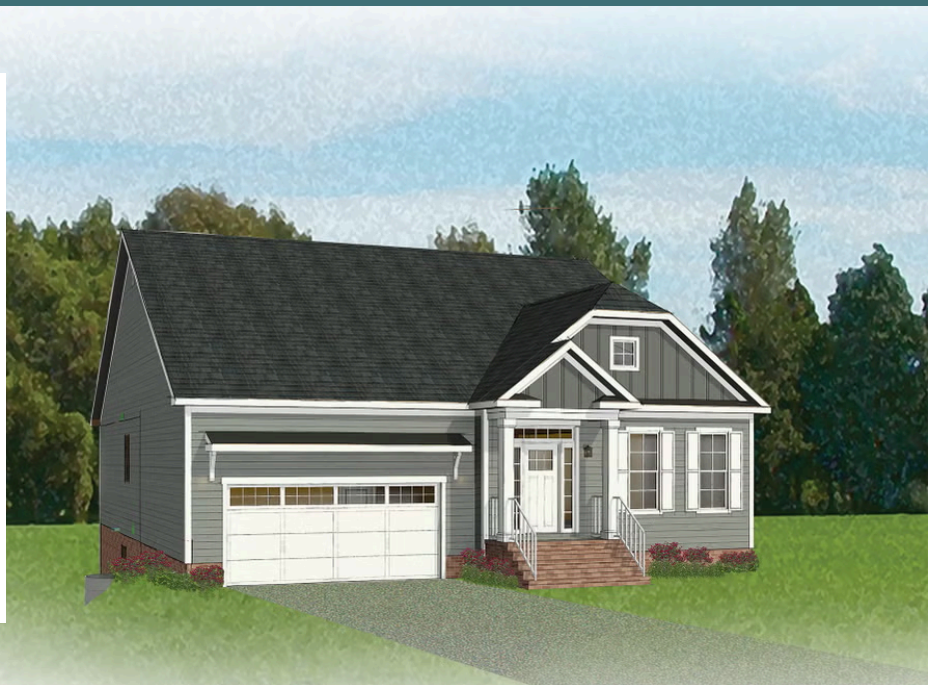
AT READERS BRANCH SINGLE FAMILY HOMES



eagle

-  3 Bedrooms
-  2.5 Bathrooms
-  3455 Square Feet
-  2 Car Garage

**\$896,476**



Think you've seen it all? Then you haven't seen Linden Terrace, a 2-story plan with 3 bedrooms, 2.5 baths, a 2-car garage, and 3,400 glorious square feet of pure home happiness. A front porch made for sipping lemonade and social graces welcomes you inside to a chef's dream kitchen offering a scenic vista overlooking both breakfast nook and family room. A formal dining room and home study lend sophistication and flexibility, while a secluded first floor primary suite with prodigious walk-in closet and dual-sink bath offer a quiet escape. Step downstairs to the terrace level where an expanded rec room, full bath, and two additional bedrooms blend playfulness, with easygoing comfort and everyday livability—while a cavernous unfinished storage area is ready for whatever you can imagine.

## Features of this Home

- Screened In Porch
- Serenity Primary Bath
- Expanded Rec Room in Basement
- Hardwood Stairs
- Fireplace in Family Room

[eagleofva.com](http://eagleofva.com)

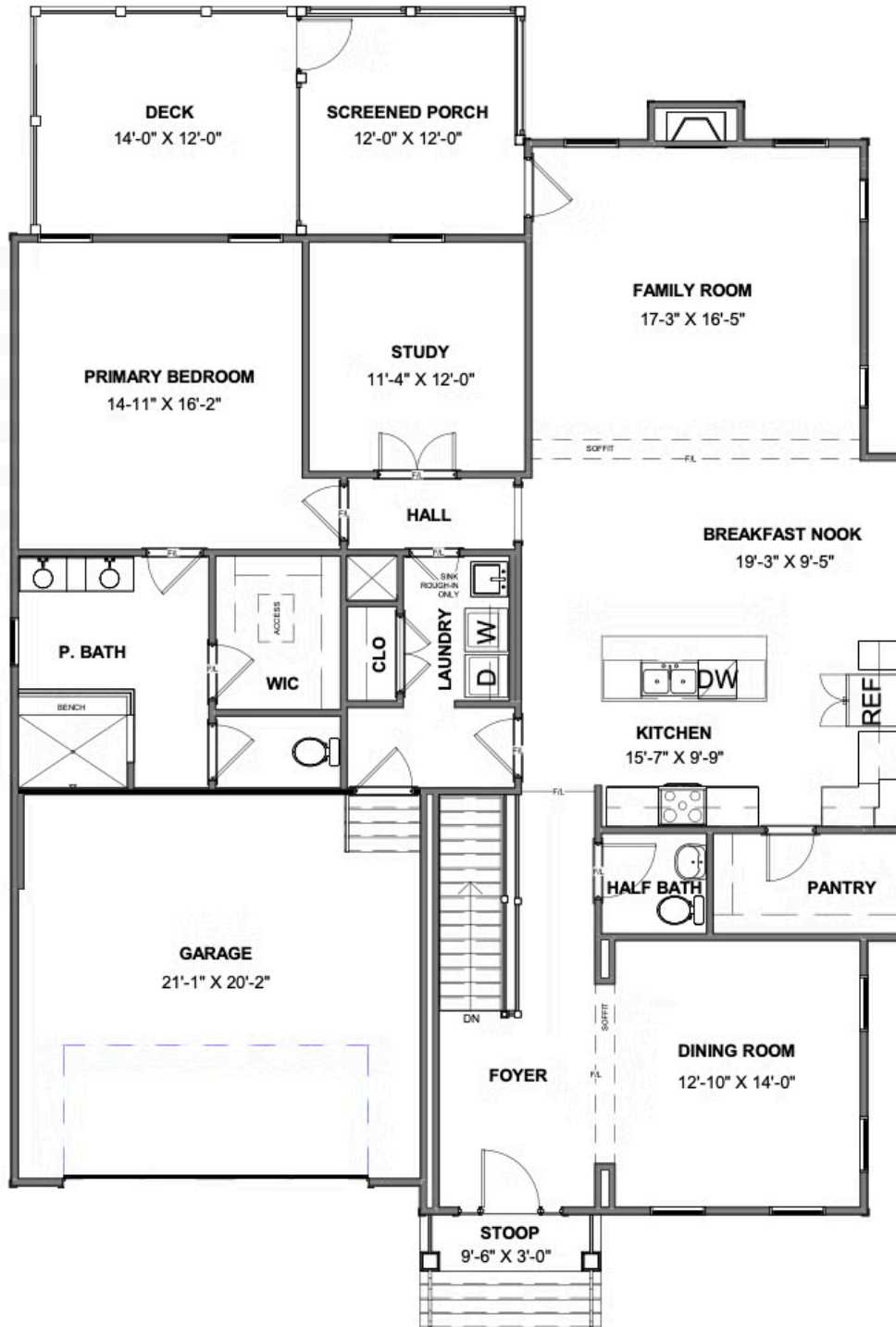
# 12644 Branch Parke Drive

AT READERS BRANCH SINGLE FAMILY HOMES



# eagle

## MAIN LEVEL



[eagleofva.com](http://eagleofva.com)



## TERRACE LEVEL

