




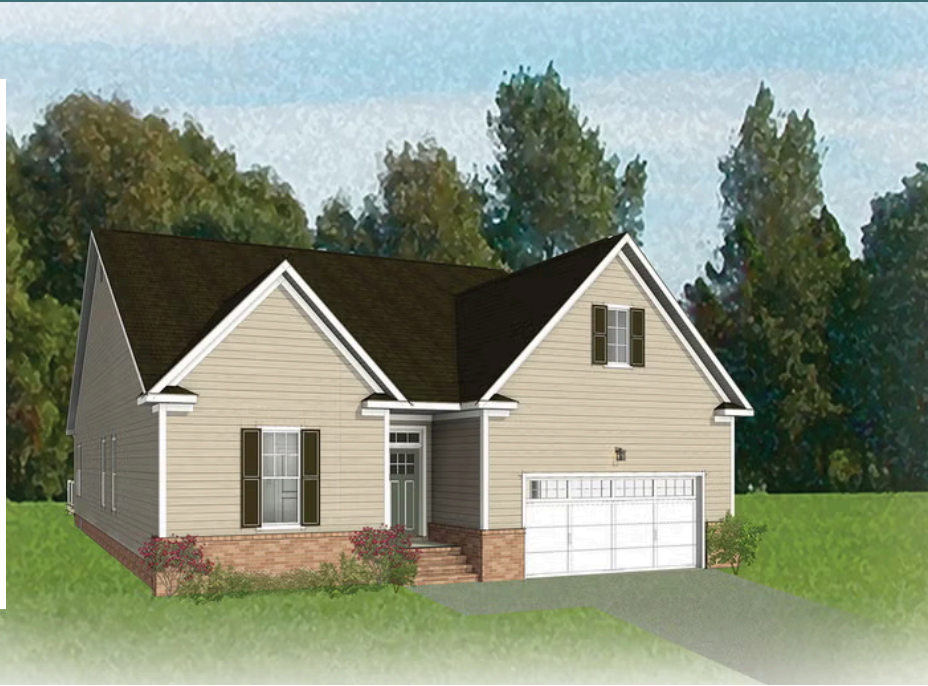


-  3 - 5 Bedrooms
-  2 - 3 Bathrooms
-  2,106 Square Feet
-  2 Car Garage
-  1 Levels



Taking single-level living to the next level of style, the Corvallis offers 3 bedrooms, 2 full baths, a 2-car garage, and over 2,000 square feet of space. You'll feel right at home in the expansive, easy-flowing design blending both modern kitchen and family room into a centerpiece for contemporary living. After the day, escape to your primary bedroom oasis, complete with a dual-sink bath and cavernous walk-in closet. Two additional bedrooms and a central laundry room complete the plan. Packed with features and built for flexibility, the Corvallis can be personalized to your needs, with options for a second floor, a pocket office, morning room, screen porch, and more.

### Features of this Floorplan

- One level living
- Option for second floor loft, bedrooms, and/or unfinished storage
- Option for morning room
- Option for screened porch or lanai
- Multiple primary bath configurations
- Den or formal dining room options

# THE Corvallis

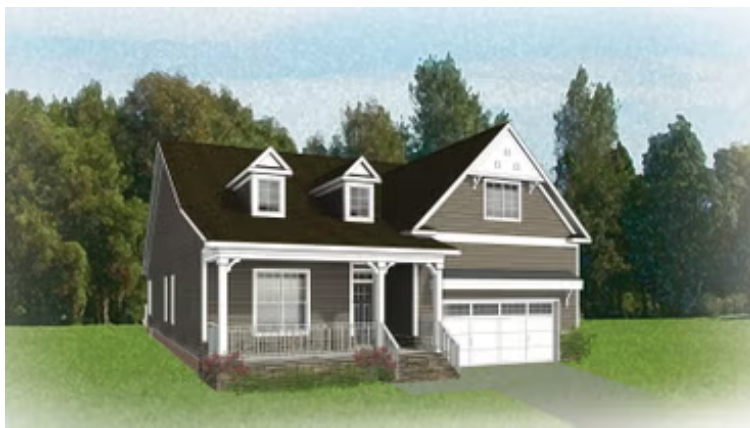
AT READERS BRANCH SINGLE FAMILY HOMES



**Colonial**



**Craftsman**



**European**

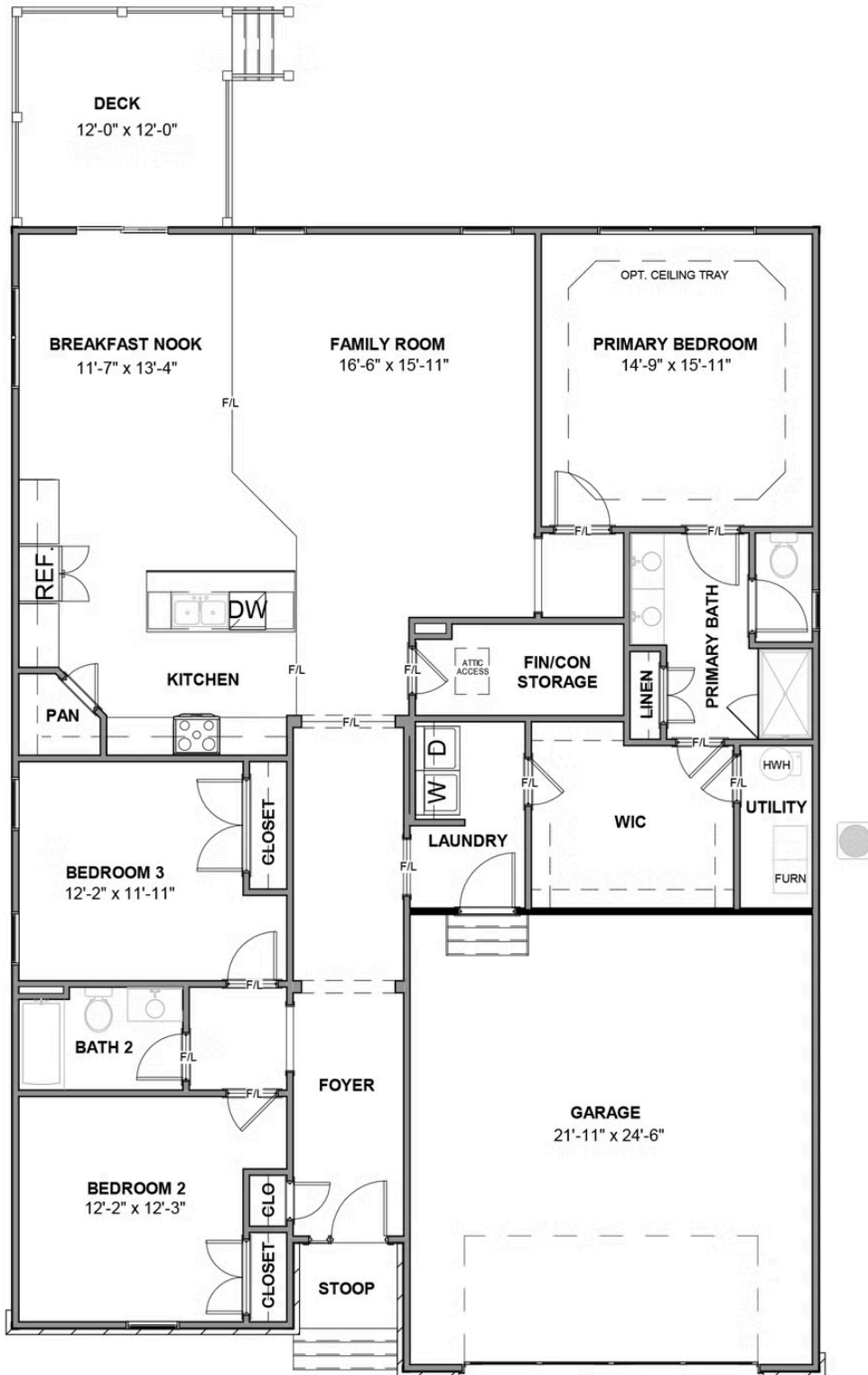


**Traditional**

[eagleofva.com](http://eagleofva.com)

# THE Corvallis

AT READERS BRANCH SINGLE FAMILY HOMES



eagleofva.com