





# 12635 Branch Parke Drive

AT READERS BRANCH TOWNHOMES



# eagle

-  3 Bedrooms
-  2.5 Bathrooms
-  2411 Square Feet
-  2 Car Garage

## \$629,626



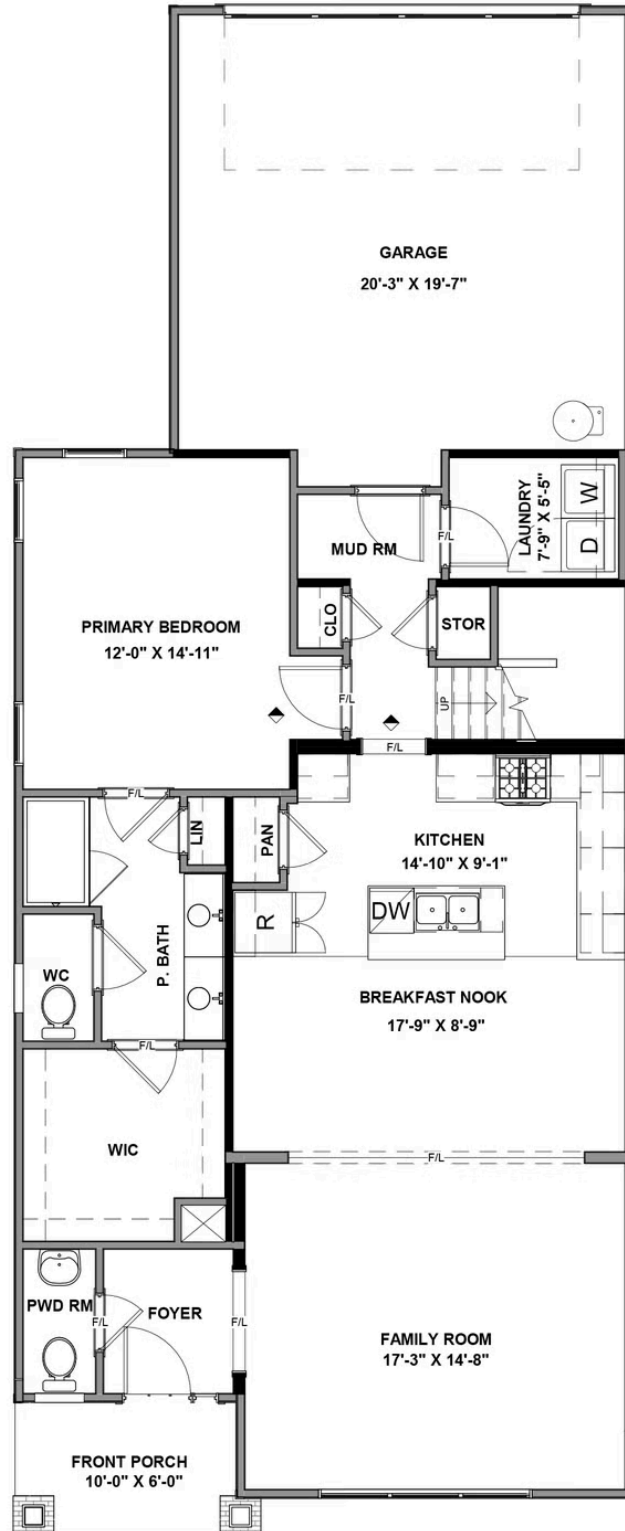
As timeless as it is contemporary, the Manchester Townhome is a 2-story plan with 3 bedrooms, 2.5 baths, and over 2,400 square feet of head-turning curb appeal. Step inside the foyer and be swept away by free-flowing spaciousness that whisks you effortlessly from family room to breakfast nook and on into a beautiful kitchen ready for cooking up memories. The first floor primary suite with expansive bath and walk-in closet leaves nothing to spare. Upstairs offers a loft area, two additional bedrooms, a full bath, and ample opportunities to personalize.

### Features of this Home

- Fireplace
- Outdoor Courtyard
- Hardwood Stairs
- Gas Cooking
- Additional Storage Area

[eagleofva.com](http://eagleofva.com)

## FIRST FLOOR



## SECOND FLOOR

