





8672 Hope Farm Lane

AT BRUNSWICK



-  3 Bedrooms
-  2.5 Bathrooms
-  2046 Square Feet
-  2 Car Garage

\$463,966



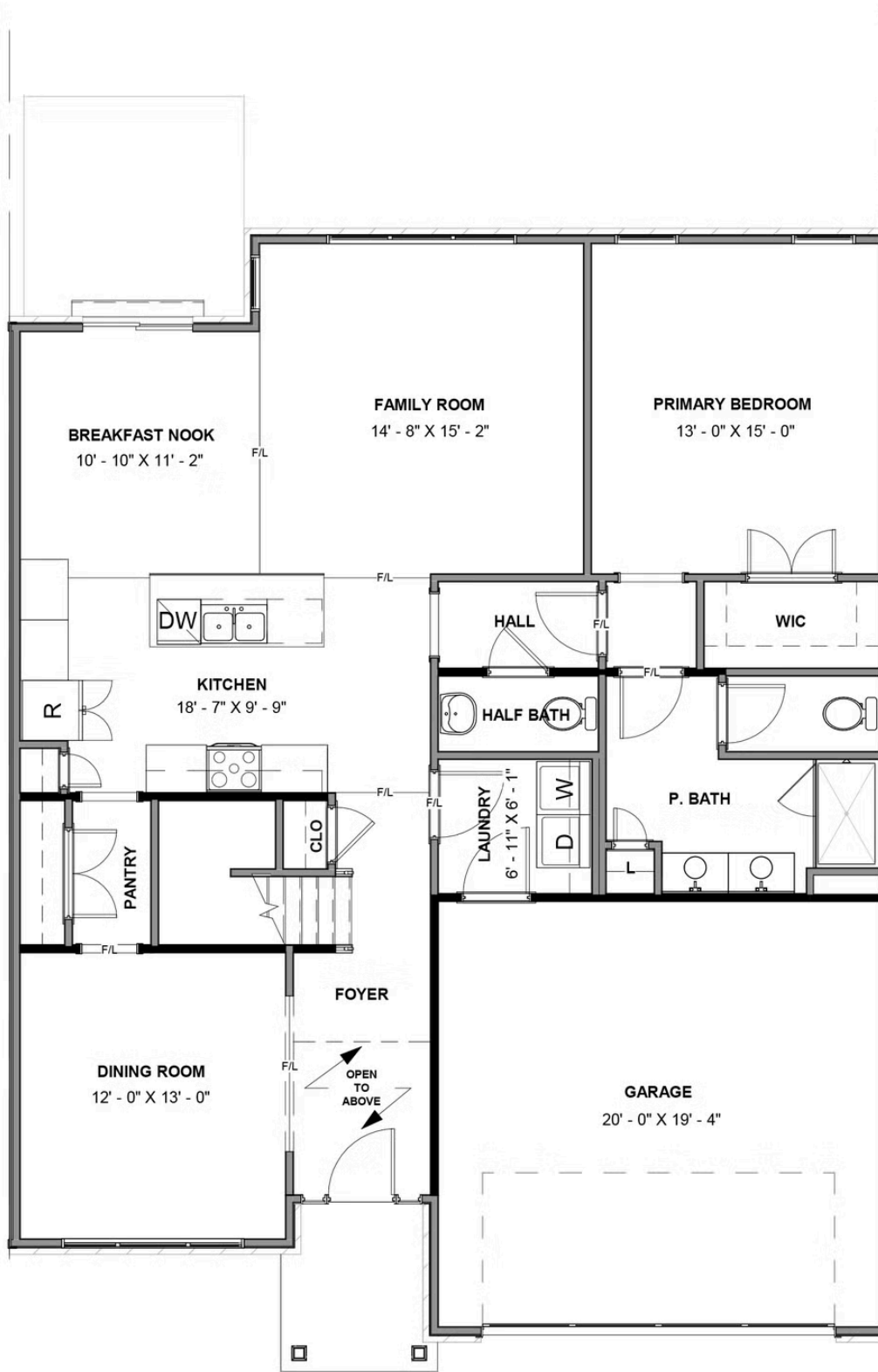
Welcome home to the Pearl, the 2-story low maintenance townhome you've been looking for. With a 2-car garage and over 2,000 square feet of living space, there's plenty of room for you and your family. A dining room at the front of the home takes you straight on through a pantry and into your kitchen with large island overlooking breakfast nook and spacious family room. The primary bedroom is truly secluded down a hallway at the rear of the home with spacious primary bath, separate water closet, and walk-in closet. A half bath and laundry room finish out the main level for added convenience. Head on up to the second floor where you'll find a loft, two additional bedrooms with walk-in closets, full bath, and unfinished/conditioned storage space. This is the perfect spot for some extra space or for your guests and visiting family.

Features of this Home

- Formal Dining Room
- First Floor Primary Bedroom Suite
- LED Recessed Lighting Package with Dimmer Switch in Family Room and Primary Bedroom
- Hardwood Stairs
- Walk-In Unfinished Conditioned Storage

eagleofva.com

FIRST FLOOR



SECOND FLOOR

