





-  3 Bedrooms
-  3.0 Bathrooms
-  2293 Square Feet
-  2 Car Garage

\$479,900

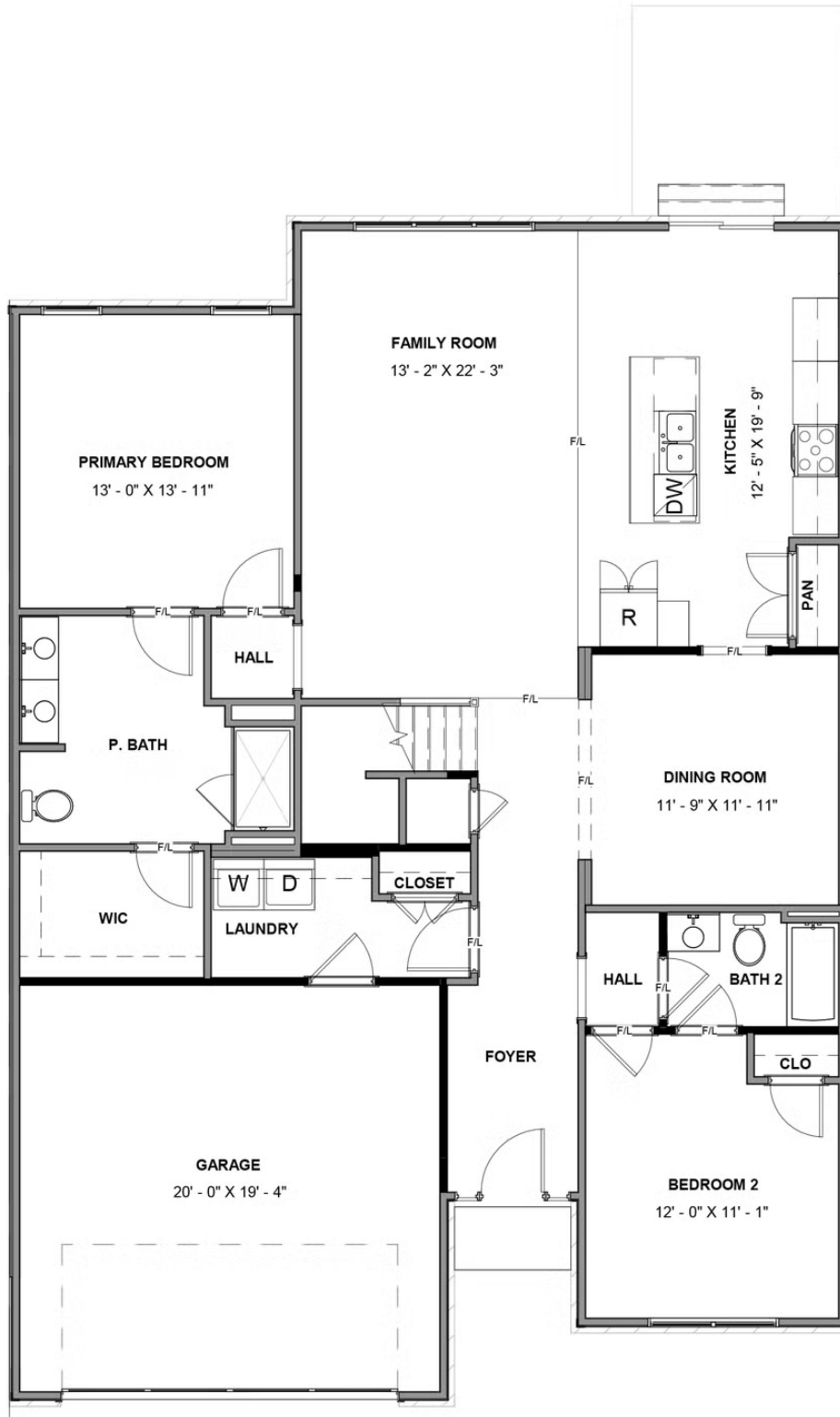


Welcome home to the Brady, a 2-story townhome with 2-car garage and plenty of room to spread out and call your own. Enter through the garage and into your laundry/mud room. The open concept kitchen features a large island overlooking the family room, spacious pantry, and access to the dining room. Tucked off the family room is your primary bedroom retreat with large primary bath and walk-in closet. A second bedroom and full bath can be found at the front of the home. Head on up to your second floor where you'll find a loft, third bedroom with walk-in closet, and full bath.

Features of this Home

- Stainless Steel Gas Range, Chimney Hood, Microwave Drawer, and Dishwasher
- Loft
- Study on Second Floor
- Recessed Lighting Package in Loft, Family Room and Primary Bedroom
- Craftsman Wainscoting in Dining Room
- Laminate RevWood Select Flooring Throughout Main Living Areas
- Hardwood Stairs
- 9' Ceilings on First Floor

FIRST FLOOR



SECOND FLOOR

