

8411 Villetta Pointe Lane

AT VILLETTA POINTE



-  3 Bedrooms
-  2.5 Bathrooms
-  1 620 Square Feet

\$455,702



Introducing the Pritchard, one of Eagle's newest floor plans that is built to match your lifestyle.

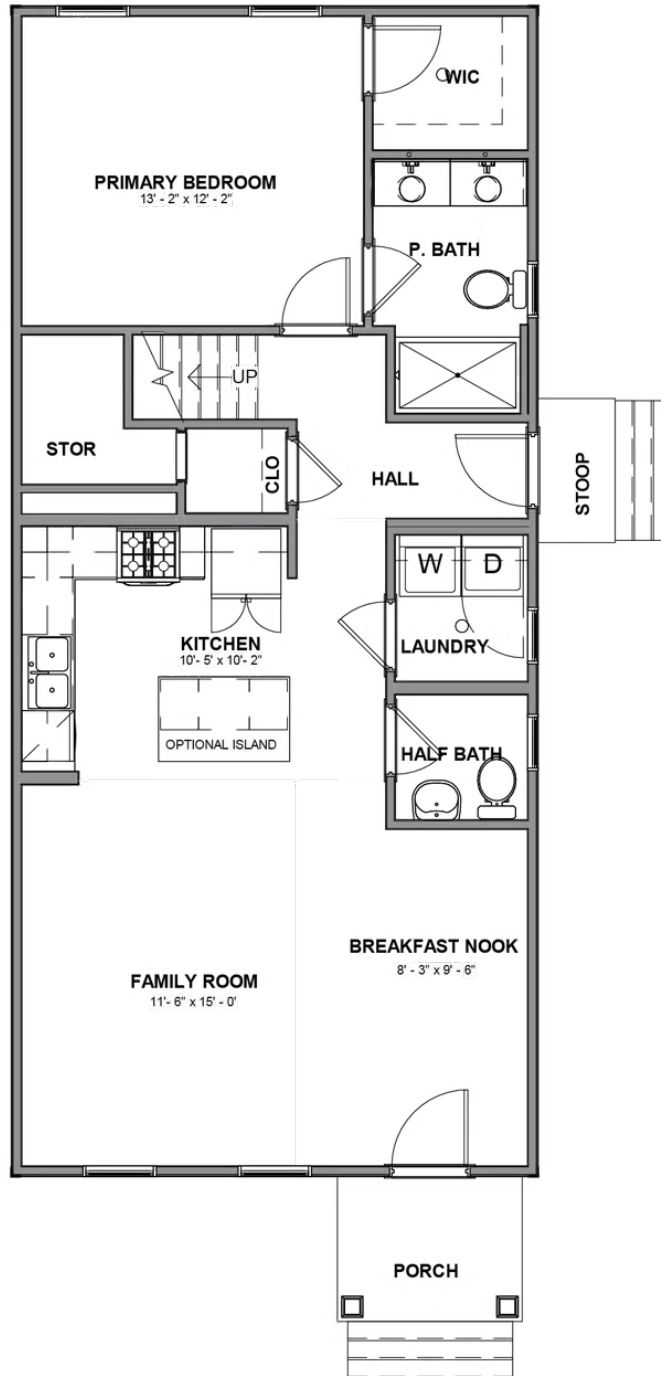
The main living area is spacious and cozy, with a kitchen overlooking the family room and breakfast nook. The primary bedroom suite is tucked away at the rear of the home with walk-in closet and primary bath with dual vanities. And our favorite part of the home? A closet and storage area under the stairs that just keeps going - you'll have to explore it for yourself! A half bath and laundry room complete the first floor. Head up to the second floor which has two generously sized bedrooms, a full bath, and an additional storage area.

Features of this Home

- Additional Storage Closet on 2nd Floor
- Patio
- Kitchen features 36" cabinets with contemporary crown molding, refrigerator enclosure, luxury marble countertops, and island
- Laminate RevWood Select flooring through main living areas

eagleofva.com

FIRST FLOOR



SECOND FLOOR

