





# THE Pritchard

AT VILLETTA POINTE



-  3 Bedrooms
-  2.5 Bathrooms
-  1,578 Square Feet
-  2 Levels



Introducing the Pritchard, one of Eagle's newest floor plans that is built to match your lifestyle.

The main living area is spacious and cozy, with a kitchen overlooking the family room and breakfast nook. Add an island in the kitchen to give you even more countertop space and sets the stage for entertaining. The primary bedroom is tucked away at the rear of the home with walk-in closet and primary bath with dual vanities. And our favorite part of the home? A closet and storage area under the stairs that just keeps going - you'll have to explore it for yourself! A half bath and laundry room complete the first floor. Head up to the second floor which has two generously sized bedrooms, a full bath, and the option to add an additional storage area.

[eagleofva.com](http://eagleofva.com)

# THE Pritchard

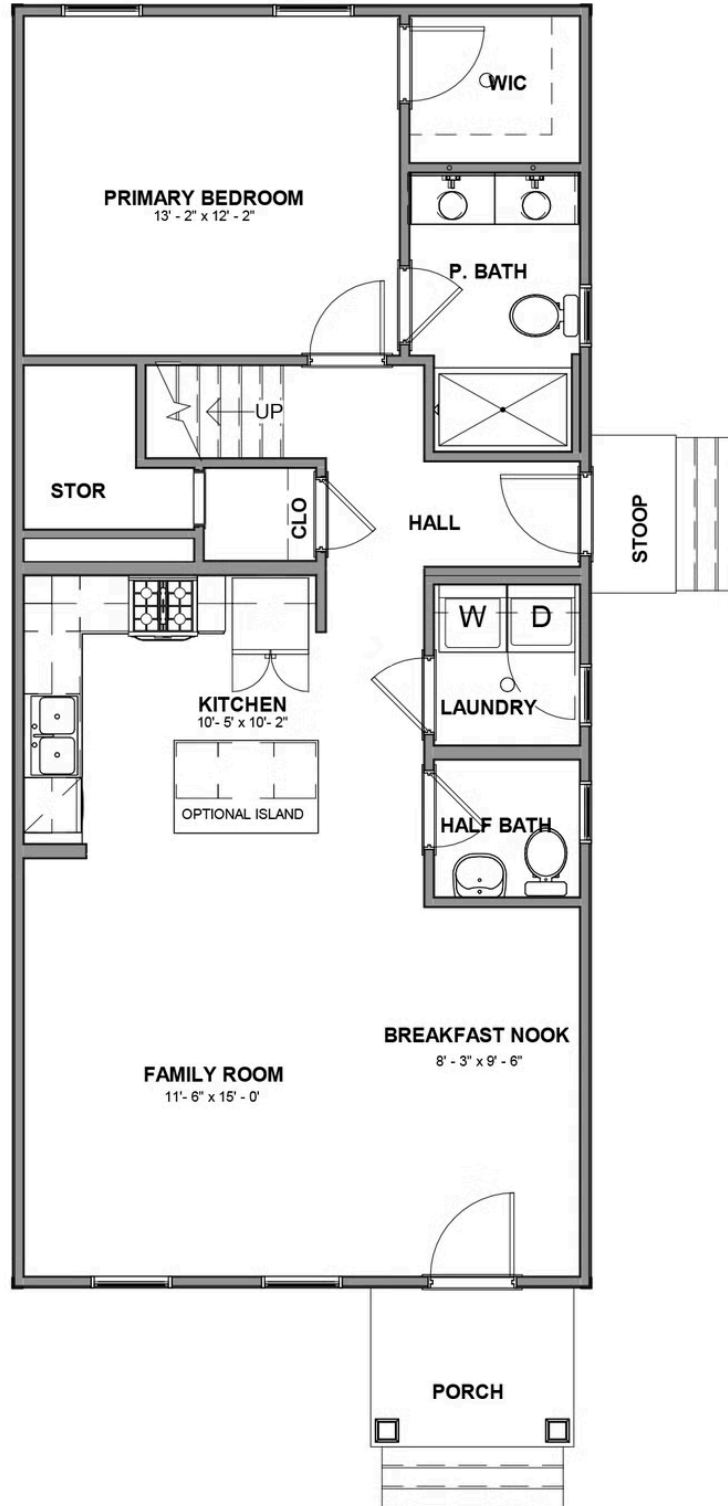
AT VILLETTA POINTE



[eagleofva.com](http://eagleofva.com)

This information is deemed reliable but not guaranteed. All details, dimensions, square footage, illustrations and pricing are approximate and may vary from actual plans and specifications. Contact an Eagle Sales Consultant for details. Current information as of 1st April 2025

FIRST FLOOR



SECOND FLOOR

