





# 9463 Creek Summit Circle #19



AT CREEK'S EDGE AT STONY POINT

-  3 Bedrooms
-  3.5 Bathrooms
-  2587 Square Feet
-  2 Car Garage

**\$624,900**



Welcome home to Creek's Edge, a low maintenance townhome community in the heart of Huguenot and situated right near Stony Point Fashion Park. The Creek's Edge B plan is a 3-story townhome, featuring rear load 2-car garage on the basement level which leads you into your bonus room and full bath. Head on up to the main level of the home which features a flex space, kitchen with long island and LOTS of cabinet space that overlooks the family room. Head on out to your back deck for some quiet relaxation as you sip your morning coffee or wind down from the day. On the top floor of the townhome you'll find your primary bedroom with spacious primary bath; along with 2 additional bedrooms, full bath, and laundry room for added convenience.

## Features of this Home

- End Unit
- Gas Fireplace in Family Room
- White Cast Iron Apron Front Kitchen Sink
- 42" Yorktowne Henning Neutral Painted Cabinets featuring Crown Molding, Double Trash Pull Out, Refrigerator Enclosure, and more
- Quartz Countertops and Ceramic Tile Backsplash in Kitchen
- Stainless Steel Appliances including Gas Range, Chimney Hood, Microwave Drawer, and Dishwasher
- Mohawk Pergo Landmore Reverance Oak Flooring in Main Living Areas
- LED Recessed Lighting Package in Family Room

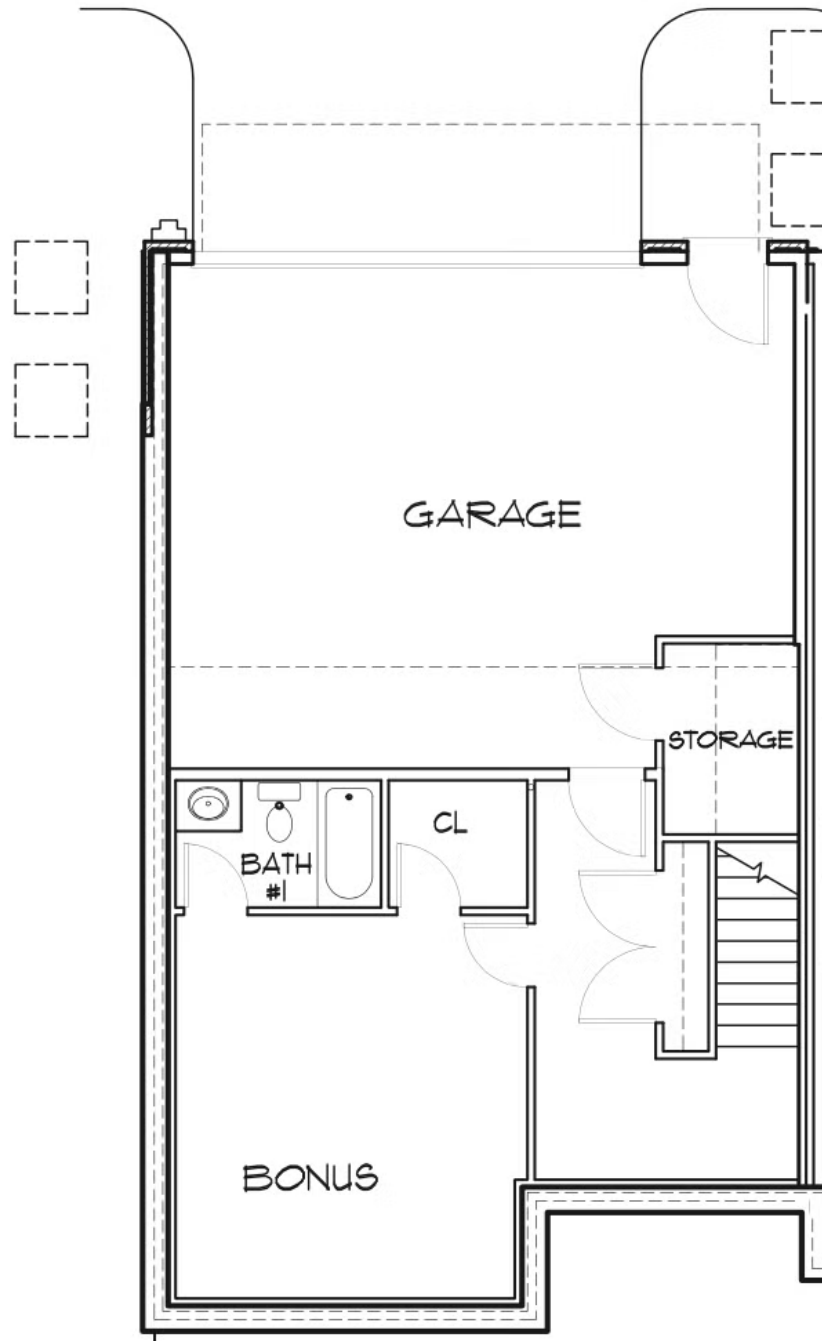
[eagleofva.com](http://eagleofva.com)

# 9463 Creek Summit Circle #19



AT CREEK'S EDGE AT STONY POINT

## BASEMENT



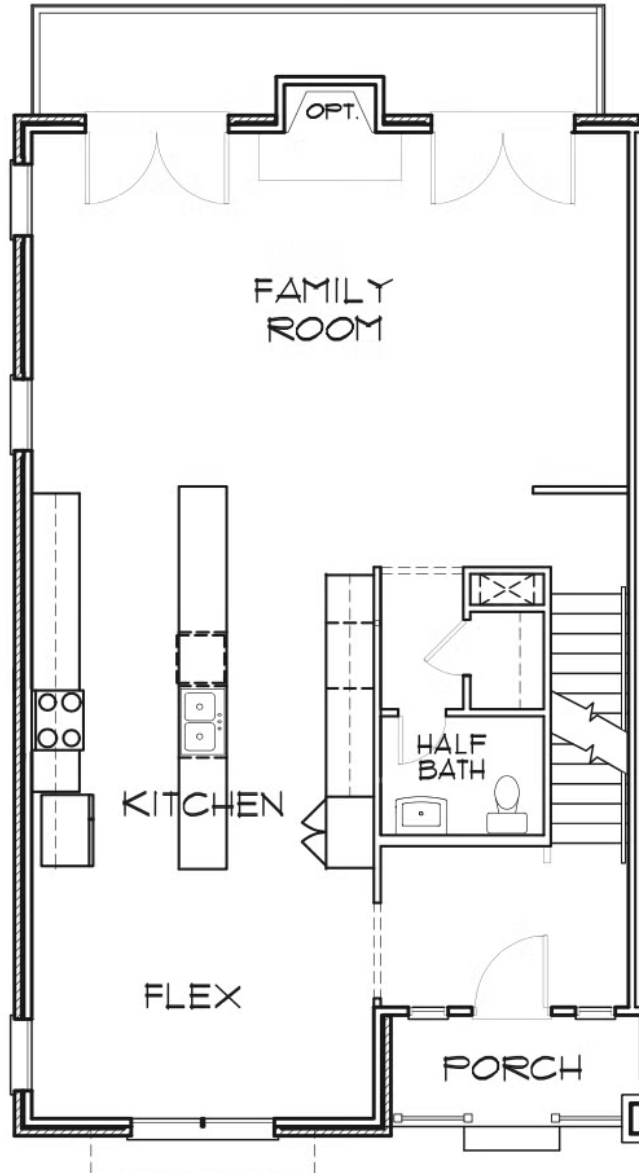
[eagleofva.com](http://eagleofva.com)

# 9463 Creek Summit Circle #19



AT CREEK'S EDGE AT STONY POINT

## FIRST FLOOR



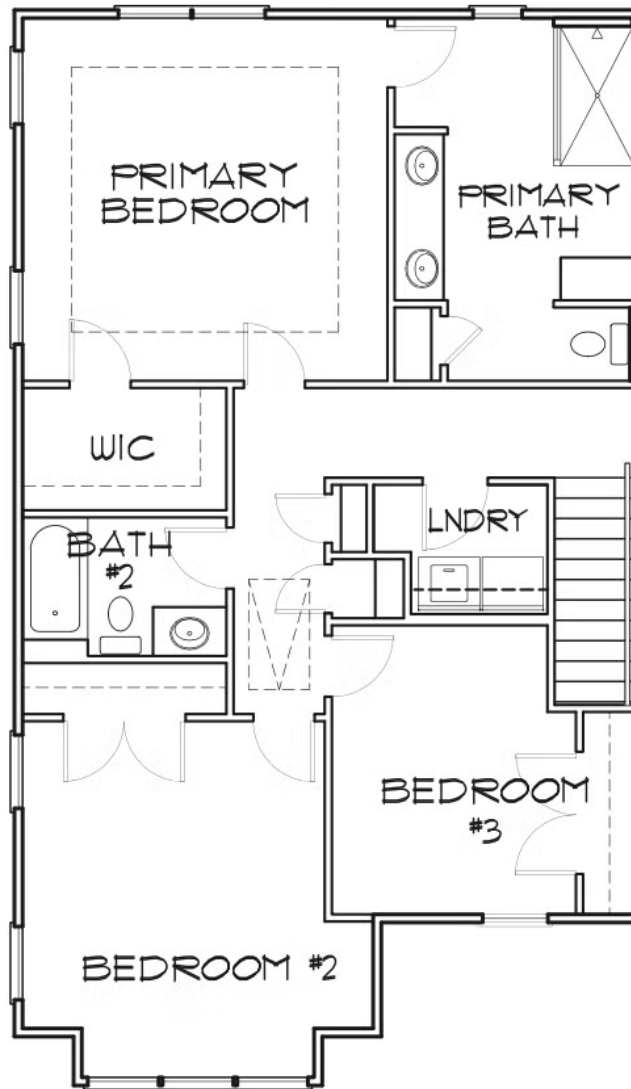
[eagleofva.com](http://eagleofva.com)

# 9463 Creek Summit Circle #19

AT CREEK'S EDGE AT STONY POINT



## SECOND FLOOR



[eagleofva.com](http://eagleofva.com)