






# THE Creek's Edge C

AT CREEK'S EDGE AT STONY POINT



-  3 Bedrooms
-  3.5 Bathrooms
-  2,008 Square Feet
-  2 Car Garage
-  3 Levels



Welcome to your new 3-story townhome at Creek's Edge, a low maintenance community in the heart of Huguenot right next to Stony Point Fashion Park. Your rear load 2-car garage will bring you to the basement level of your home with bonus room and full bath. Head upstairs to the main level where you'll find a flex space with French doors, perfect for a home office, quiet place to curl up with a book, or anything that recharges your batteries. The kitchen features a large corner pantry with island overlooking the family room. Head on out to your deck to start your day with a relaxing cup of coffee or to enjoy a quiet evening. The top floor of the townhome features a tucked away primary bedroom with primary bath; as well as two additional bedrooms, full bath, and laundry room.

[eagleofva.com](http://eagleofva.com)



# THE Creek's Edge C

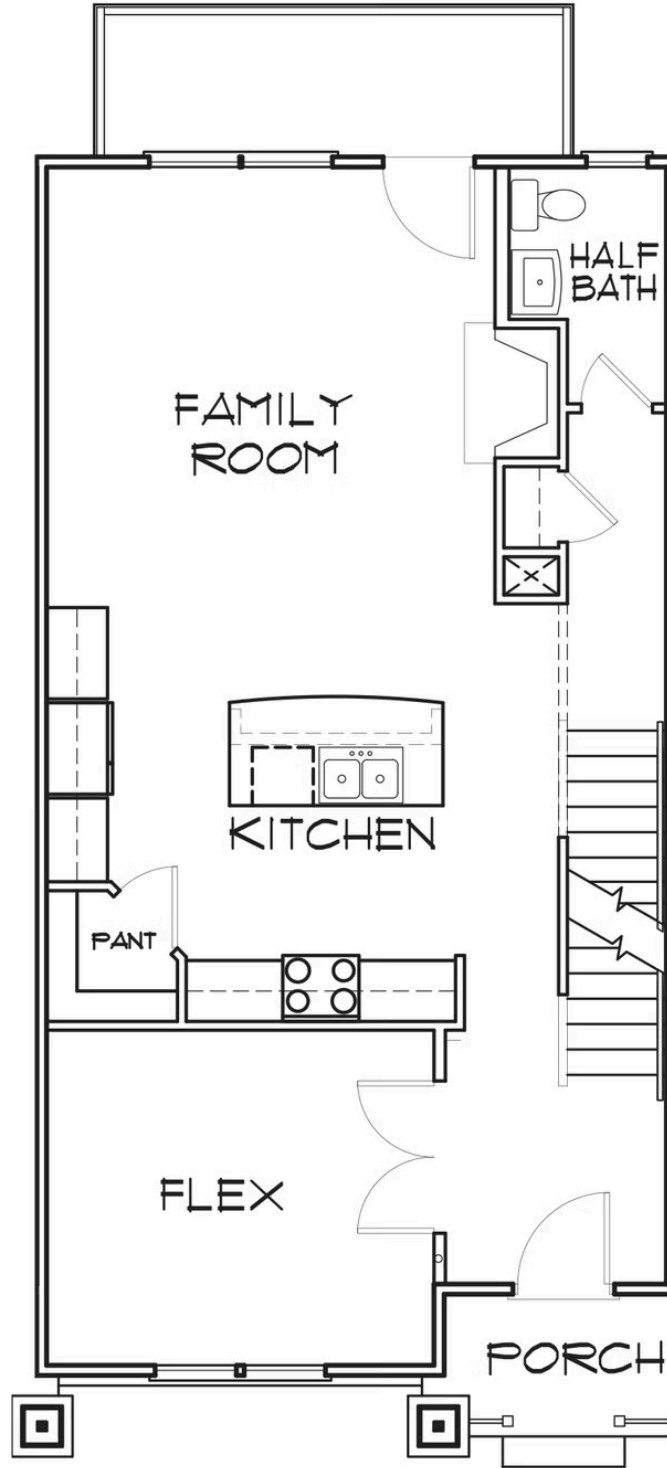
AT CREEK'S EDGE AT STONY POINT



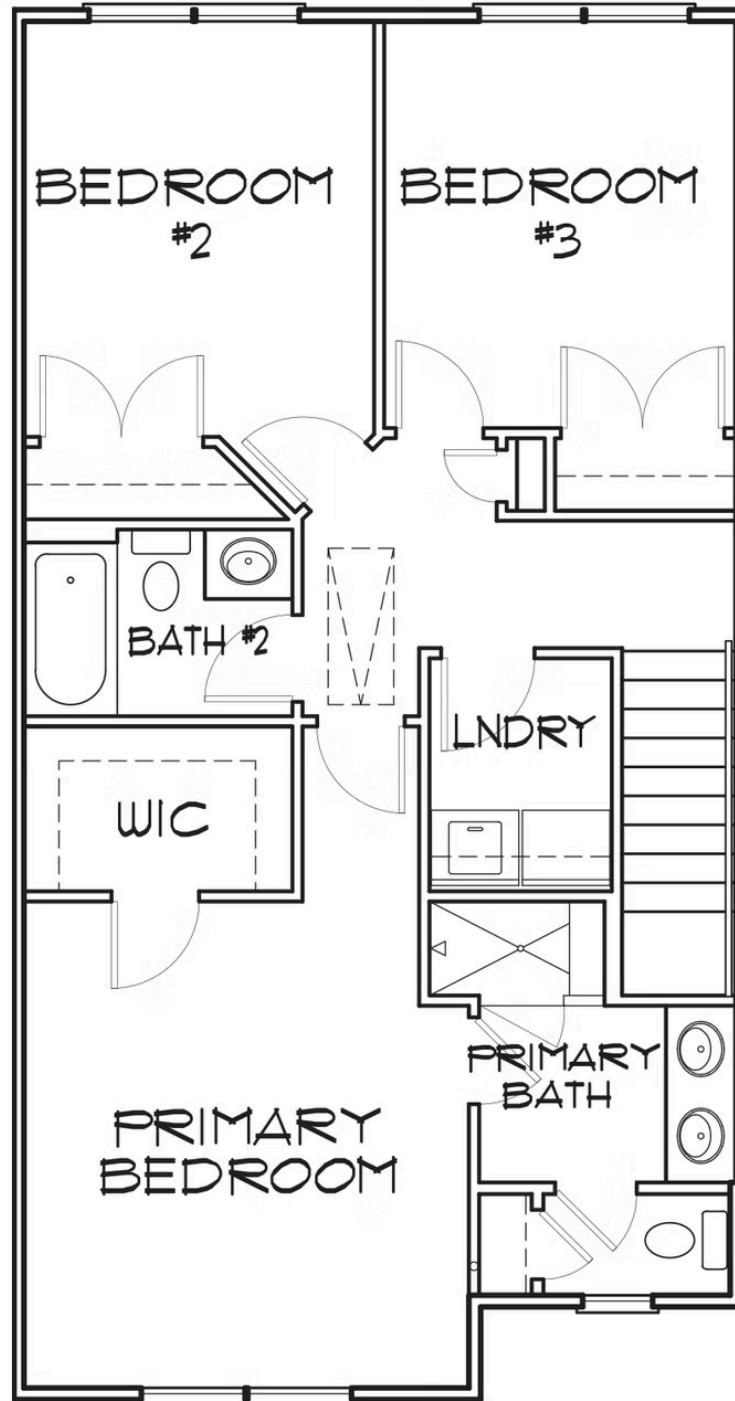
[eagleofva.com](http://eagleofva.com)



FIRST FLOOR



SECOND FLOOR



**BASEMENT**

