





-  3 Bedrooms
-  3.5 Bathrooms
-  2350 Square Feet
-  2 Car Garage

\$749,900

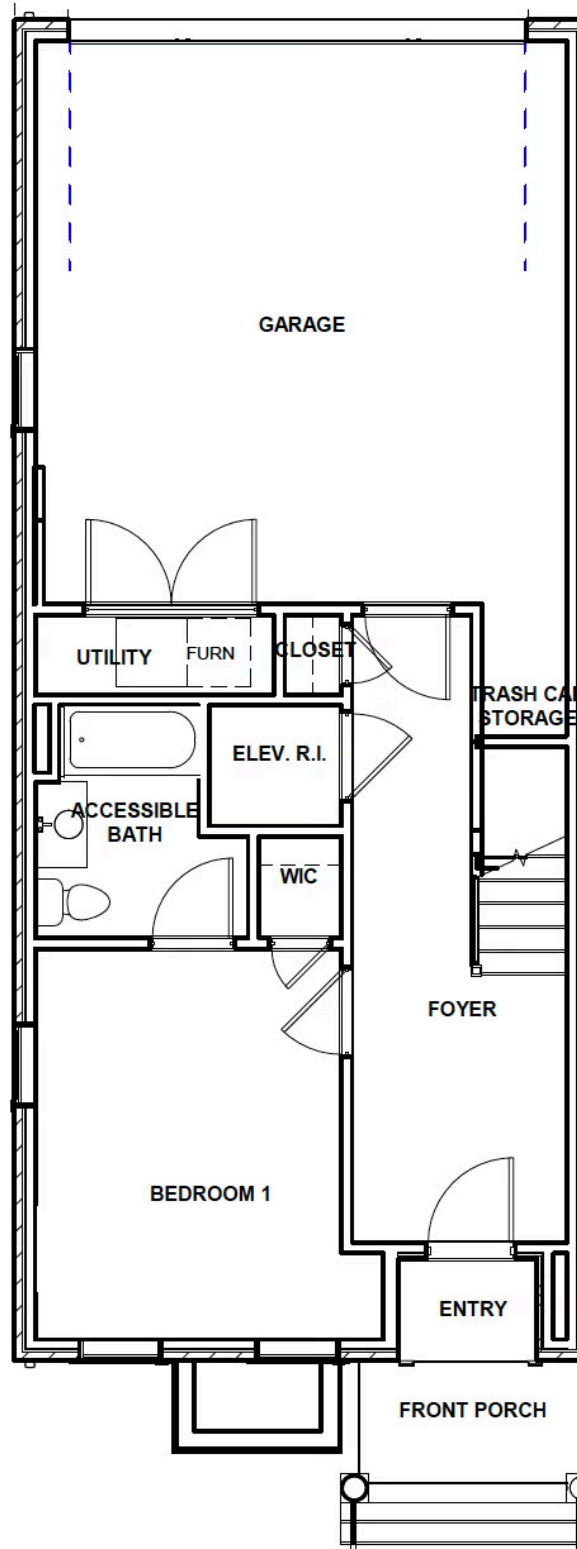


This end unit Davenport is a 3-story luxury townhome with plenty of space to make your own. On the first floor you will find your rear load 2-car garage, as well as a bedroom and full bath. Head on up to the second floor where you will find dual primary bedrooms with walk-in closets, as well as your Laundry Room for added convenience. The main primary bedroom features an Ultimate primary bath with expanded walk-in shower. Make your way to the top floor and you'll see what's really unique about this plan – your Kitchen, Dining, and Family Room are all up here, as well as your rear covered terrace. This is the perfect space for entertaining or enjoying a relaxing evening in! There is also an elevator rough-in to the 2nd floor.

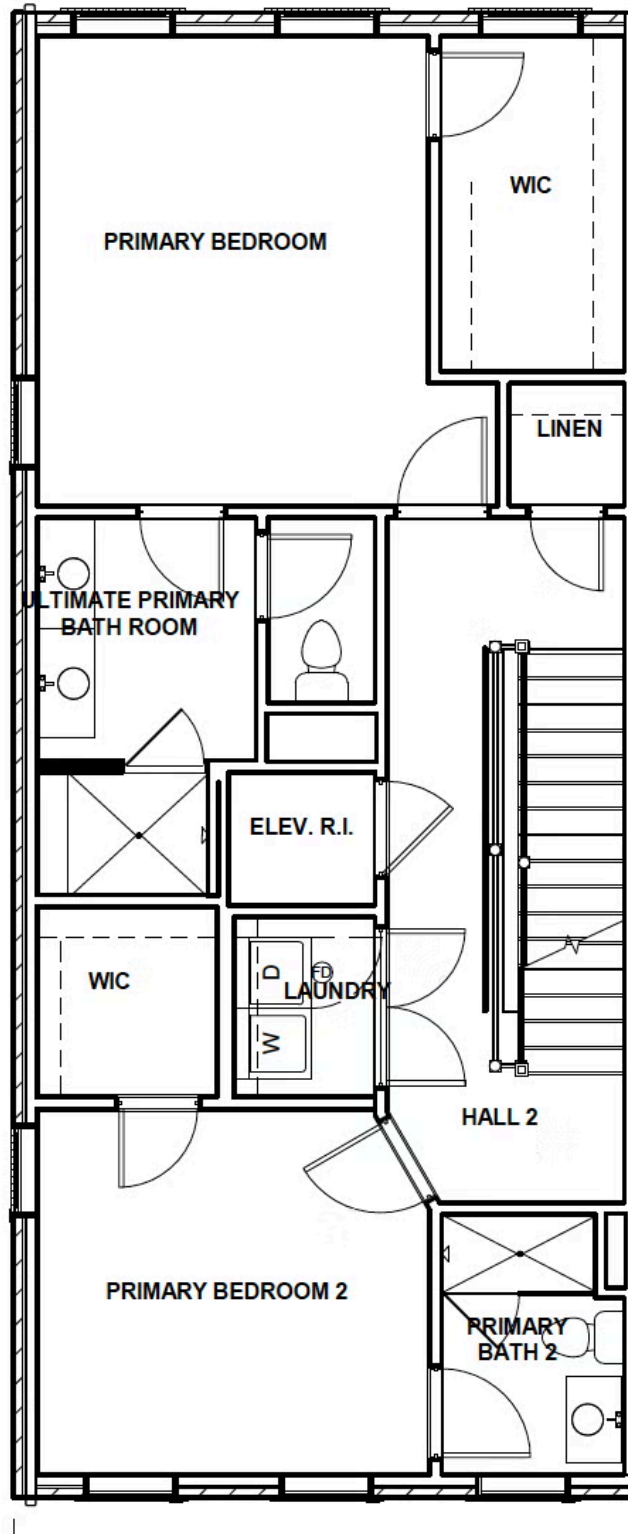
Features of this Home

- End unit
- Rear covered terrace on 3rd floor
- Elevator rough-in to 2nd floor
- Rear load 2-car garage
- Ultimate primary bath with expanded walk-in shower
- First floor bedroom with full bath
- Kitchen features white cabinetry with a dark accent color on island, white calacatta quartz countertops, white subway tile backsplash, and stainless steel KitchenAid appliances
- Light oak colored laminate hardwood flooring in all main living areas and bedrooms

FIRST FLOOR



SECOND FLOOR

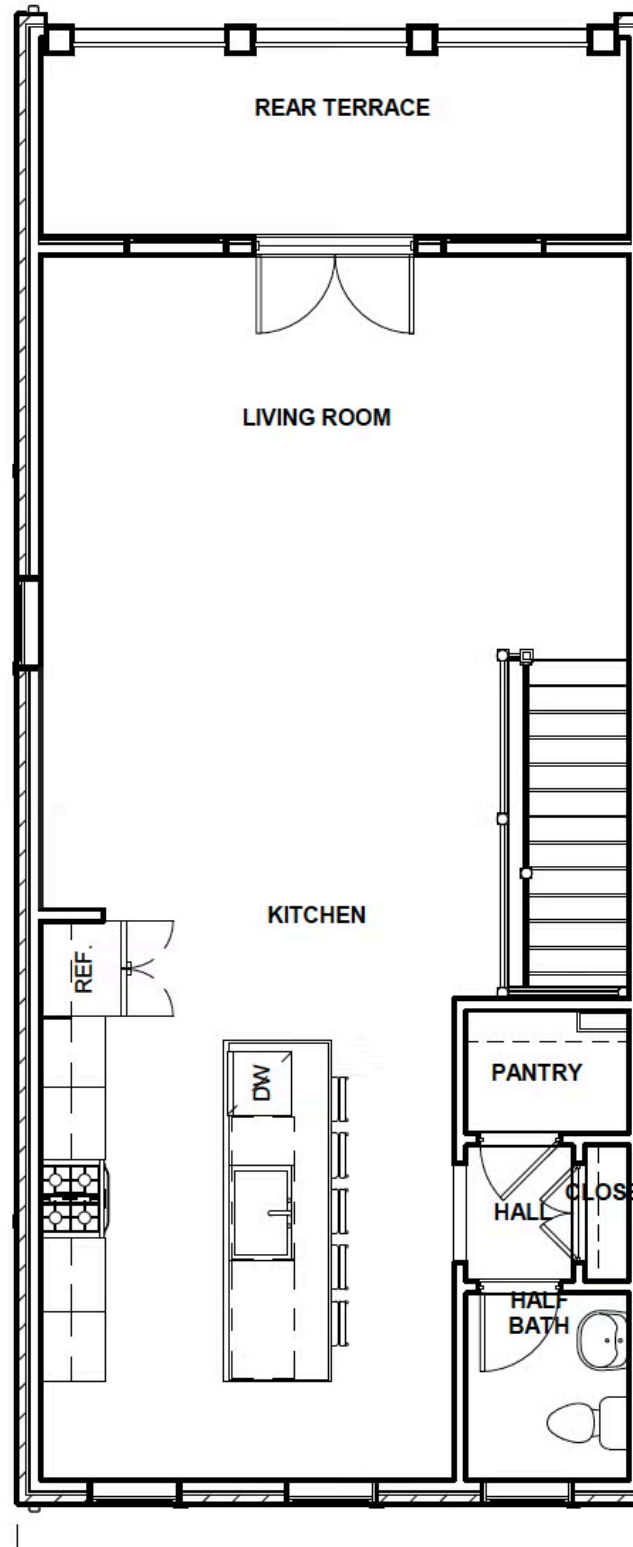


11 E. Main Street

AT FOUSHEE MEWS



THIRD FLOOR



eagleofva.com