





-  4 Bedrooms
-  3.5 Bathrooms
-  3100 Square Feet
-  2 Car Garage

\$939,000

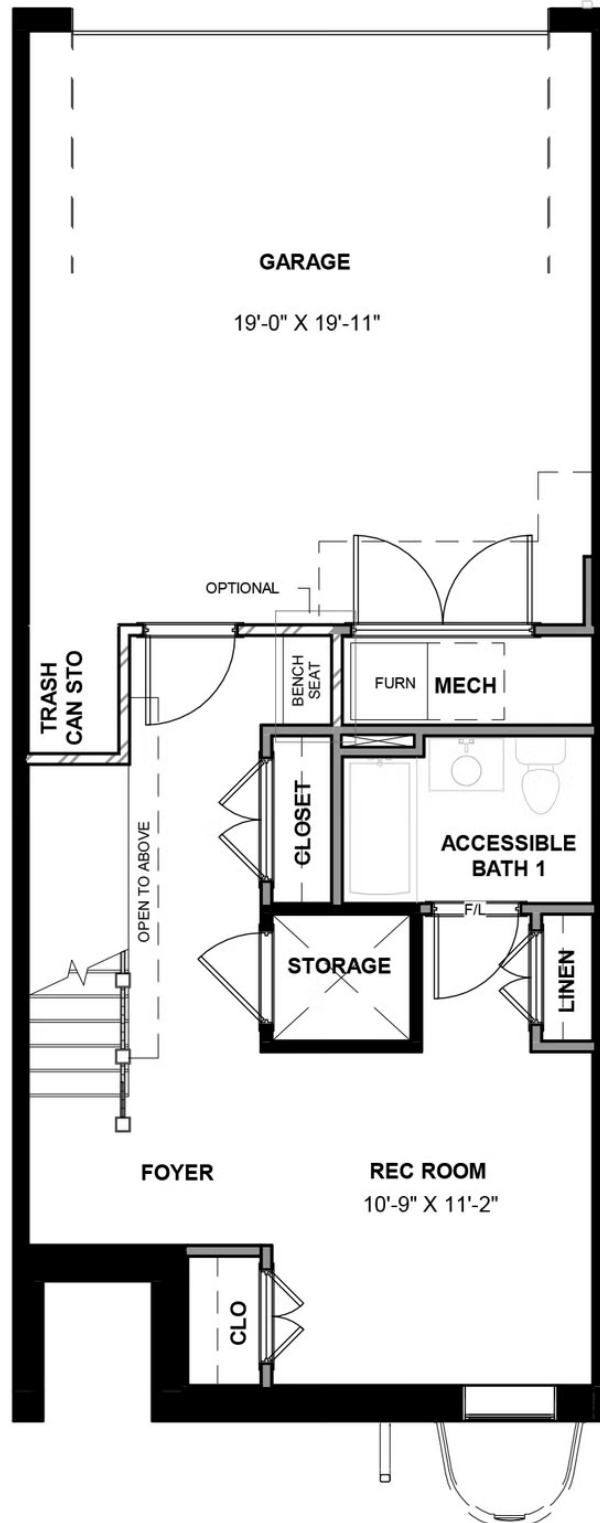


The Southaven is a 4-story second floor entry townhome with plenty of opportunity to personalize this new home floor plan to fit your lifestyle. On the first floor you will find your 2-car rear load garage, as well a bedroom and full bath. Head on up to the second floor where you will find the main entry door to your home, along with your kitchen that has a large island opening right to the spacious family room with fireplace. A dining room completes the floor. The third floor has a spacious primary bedroom and bath, along with laundry and additional bedroom with attached full bath! The fourth floor will have another bedroom and full bath, as well as a spacious media room that leads out to a large outdoor terrace. Enjoy beautiful views of the city and river from your terrace while sipping on your morning coffee or enjoying some evening appetizers and the sunset. You can add an elevator if you desire for even more convenience.

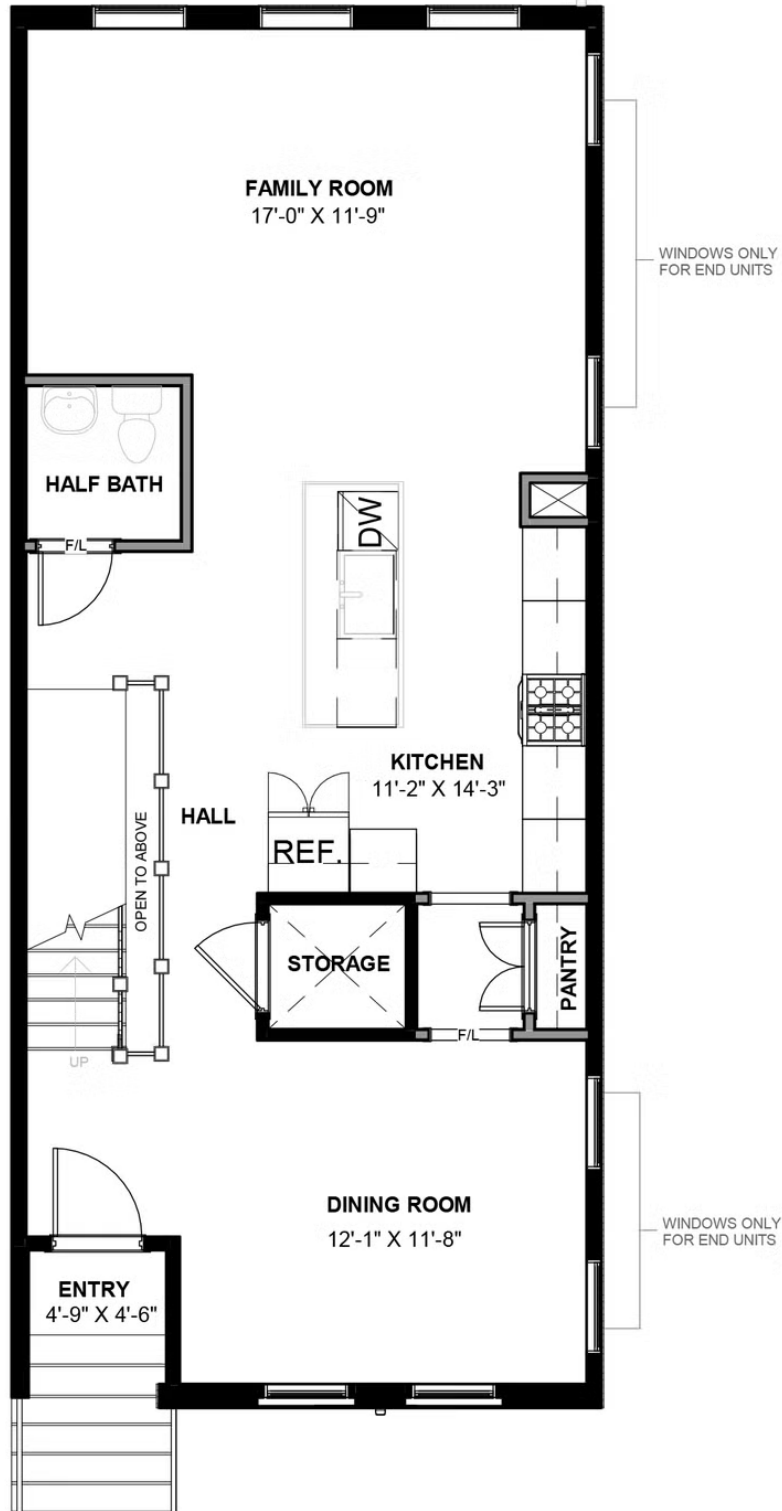
Features of this Home

- Elevator
- Luxury Quartz Countertops with Waterfall Island
- Hardwood Flooring Throughout
- Kitchen Cabinets Stacked to Ceiling
- Outdoor Terrace with City Views
- Painted Brick Fireplace in Family Room

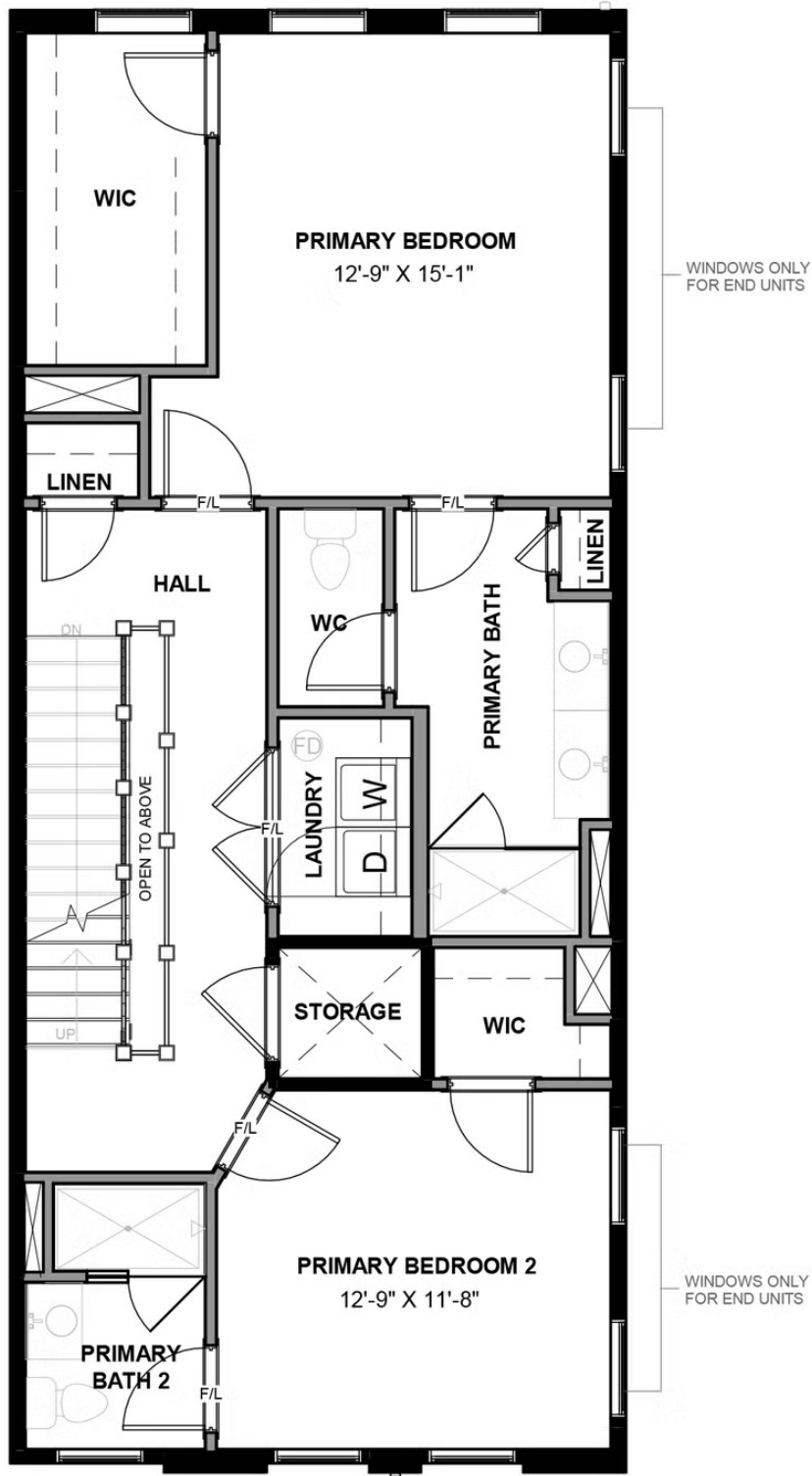
FIRST FLOOR



SECOND FLOOR



THIRD FLOOR



FOURTH FLOOR

